

## Product datasheet for **RC200361**

### TFIIF (GTF2F2) (NM\_004128) Human Tagged ORF Clone

#### Product data:

Product Type:	Expression Plasmids
Product Name:	TFIIF (GTF2F2) (NM_004128) Human Tagged ORF Clone
Tag:	Myc-DDK
Symbol:	TFIIF
Synonyms:	BTF4; RAP30; TF2F2; TFIIF
Mammalian Cell Selection:	Neomycin
Vector:	pCMV6-Entry (PS100001)
E. coli Selection:	Kanamycin (25 ug/mL)
ORF Nucleotide Sequence:	>RC200361 ORF sequence Red=Cloning site Blue=ORF Green=Tags(s)

TTTTGTAATACGACTCACTATAGGGCGGCCGGAATTCGTCGACTGGATCCGGTACCGAGGAGATCTGCC  
GCC**CGATCGCC**

ATGGCCGAGCGCGGGAACTCGACTTGACCGGCGCCAAACAGAACACAGGAGTGTGGCTAGTCAAGGTTC  
CTAAATATTTGTCACAGCAATGGGCTAAAGCTTCTGGAAGAGGTGAAGTTGGGAACTGCGGATTGCCAA  
GACTCAAGGAAGGACTGAGGTGTCATTTACTTTGAATGAGGATCTTGCAAATATTCATGATATTGGTGA  
AAACCAGCTTCAGTCAGTGCTCCTAGAGAACATCCATTTGTCTTGCAAAGTGTGGAGGACAGACATTAA  
CAGTATTTACTGAGAGCTCATCAGATAAGCTGTCATTGGAAGGAATAGTGGTACAAGAGCTGAATGCCG  
ACCAGCTGCCAGTGAAAACATGCGATTAATAAGATTGCAAATAGAAGAGTCTTCCAAACCAGTGAGG  
CTATCACAAACAGCTGGACAAAGTTGTAACAACCAATTACAACCTGTTGCTAATCATCAATACAATATCG  
AATATGAAAGGAAAAAGAAAGAGACGGAAAGCGAGCTCGAGCTGATAAACAACATGTTTTAGACATGCT  
ATTTTCAGCCTTTGAGAAACATCAATACTATAATCTTAAGGACTTGGTGGACATCACAAAACAACCTGTG  
GTGTACCTGAAGGAAATCTTAAAGAAATTGGTGTTCAGAATGTAAGGGATCCACAAAACACATGGG  
AGCTGAAGCCAGAGTACAGACACTATCAAGGAGAAGAAAAGAGTGAC

**ACGCGT**ACGCGGCCGCTCGAGCAGAACTCATCTCAGAAGAGGATCTGGCAGCAAATGATATCCTGGATT  
ACAAGGATGACGACGATAAGGTTTAA



[View online »](#)

**Protein Sequence:** >RC200361 protein sequence  
Red=Cloning site Green=Tags(s)

MAERGELDLTGAKQNTGVWLKVPKYLSSQWAKASGRGEVGLKRIAKTQGRTEVSFTLNEDLANIHDIGG  
 KPASVSAPREHPFVLQSVGGQTLTVFTSSDKLSLEGI VVQRAECRPAASENYMRLKRLQIEESSKPVR  
 LSQQLDKVVTNNYKPVANHQYNI EYERKKKEDGKRARADKQHVLDMLFSAFEKHQYYNLKDLVDITKQPV  
 VYLKEILKEIGVQNVKGIHKNTWELKPEYRHYQGEEKSD

TRTRPLEQKLISEEDLAANDILDYKDDDDKV

**Chromatograms:** [https://cdn.origene.com/chromatograms/mk6388\\_b05.zip](https://cdn.origene.com/chromatograms/mk6388_b05.zip)

**Restriction Sites:** SgfI-MluI

**Cloning Scheme:**



**ACCN:** NM\_004128

**ORF Size:** 747 bp

**OTI Disclaimer:** The molecular sequence of this clone aligns with the gene accession number as a point of reference only. However, individual transcript sequences of the same gene can differ through naturally occurring variations (e.g. polymorphisms), each with its own valid existence. This clone is substantially in agreement with the reference, but a complete review of all prevailing variants is recommended prior to use. [More info](#)

**OTI Annotation:** This clone was engineered to express the complete ORF with an expression tag. Expression varies depending on the nature of the gene.

**Components:** The ORF clone is ion-exchange column purified and shipped in a 2D barcoded Matrix tube containing 10ug of transfection-ready, dried plasmid DNA (reconstitute with 100 ul of water).

**Reconstitution Method:**

1. Centrifuge at 5,000xg for 5min.
2. Carefully open the tube and add 100ul of sterile water to dissolve the DNA.
3. Close the tube and incubate for 10 minutes at room temperature.
4. Briefly vortex the tube and then do a quick spin (less than 5000xg) to concentrate the liquid at the bottom.
5. Store the suspended plasmid at -20°C. The DNA is stable for at least one year from date of shipping when stored at -20°C.

**RefSeq:** [NM\\_004128.3](#)

**RefSeq Size:** 1469 bp

**RefSeq ORF:** 750 bp

**Locus ID:** 2963

**UniProt ID:** [P13984](#)

**Cytogenetics:** 13q14.12-q14.13

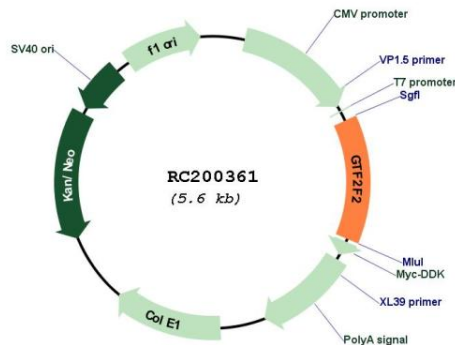
**Protein Families:** Transcription Factors

**Protein Pathways:** Basal transcription factors

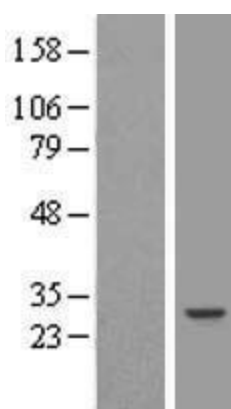
**MW:** 28.4 kDa

**Gene Summary:** TFIIF is a general transcription initiation factor that binds to RNA polymerase II and helps to recruit it to the initiation complex in collaboration with TFIIB. It promotes transcription elongation. This subunit shows ATP-dependent DNA-helicase activity.[UniProtKB/Swiss-Prot Function]

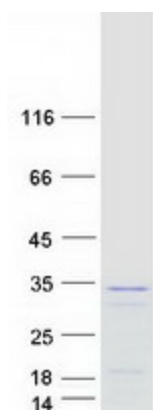
**Product images:**



Circular map for RC200361



Western blot validation of overexpression lysate (Cat# [LY418203]) using anti-DDK antibody (Cat# [TA50011-100]). Left: Cell lysates from untransfected HEK293T cells; Right: Cell lysates from HEK293T cells transfected with RC200361 using transfection reagent MegaTran 2.0 (Cat# [TT210002]).



Coomassie blue staining of purified GTF2F2 protein (Cat# [TP300361]). The protein was produced from HEK293T cells transfected with GTF2F2 cDNA clone (Cat# RC200361) using MegaTran 2.0 (Cat# [TT210002]).