

Product datasheet for RC200357

NFAT4 (NFATC3) (NM_173165) Human Tagged ORF Clone

Product data:

Product Type:	Expression Plasmids
Product Name:	NFAT4 (NFATC3) (NM_173165) Human Tagged ORF Clone
Tag:	Myc-DDK
Symbol:	NFAT4
Synonyms:	NF-AT4c; NFAT4; NFATX
Mammalian Cell Selection:	Neomycin
Vector:	pCMV6-Entry (PS100001)
E. coli Selection:	Kanamycin (25 ug/mL)
ORF Nucleotide Sequence:	>RC200357 ORF sequence Red=Cloning site Blue=ORF Green=Tags(s)

TTTTGTAATACGACTCACTATAGGGCGCCGGGAATTCGTCGACTGGATCCGGTACCGAGGAGATCTGCC
GCC**CGGATCGCC**

ATGACTACTGCAAACGTGGCGCCACGACGAGCTCGACTTCAAACCTCGTCTTTGGCGAGGACGGGGCGC
CGGCGCCCGCCCGGGCTCGCGCCGCAGATCTTGAGCCAGATGATTGTGCATCCATTTACATCTT
TAATGTAGATCCACCTCCATCTACTTTAAACCACACCCTTTGCTTACCACATCATGGATTACCGTCTCAC
TCTTCTGTTTTGTCACCATCGTTTCAGCTCCAAAGTCAAAAACTATGAAGGAACCTGTGAGATTCCTG
AATCTAAATATAGCCATTAGGTGGTCCCAAACCTTTGAGTGCCCAAGTATTCAAATTACATCTATCTC
TCCAACTGTCATCAAGAATTAGATGCACATGAAGATGACCTACAGATAAATGACCCAGAACGGGAATTT
TTGGAAAGGCCTTCTAGAGATCATCTCTATCTTCTCTTCTGAGCCATCCTACCGGGAGTCTTCTCTTAGTC
CTAGTCCCTGCCAGCAGCATCTCTTCTAGGAGTTGGTTCTCTGATGCATCTTCTGTGAATCGCTTTCACA
TATTTATGATGATGTGGACTCAGAGTTGAATGAAGCTGCAGCCGATTTACCCCTGGATCCCTCTGACT
TCTCTGGTGGCTCTCCAGGGGGCTGCCCTGGAGAAGAACTTGGCATCAACAGTATGGACTGGACACT
CATTATCACCCAGGCAATCTCCTTGCCACTCTCCTAGATCCAGTGCATGATGAGAATTGGCTGAGCCC
CAGGCCAGCCTCAGGACCCTCATCAAGGCCACATCCCCCTGTGGAAACGGAGGCACTCCAGTGTGAA
GTTTGTATGCTGGTCCCTTTACCCCATCACTCACCTGTTCTTCCACTGGTCACTCCCCAGGGGAA
GTGTGACAGAAGATACGTGGCTCAATGCTTCTGTCCATGGTGGTCCAGGCCTTGGCCCTGCAGTTTTTCC
ATTTCACTGTGTAGAGACTGACATCCCTCTCAAAACAAGGAAAACCTCTGAAGATCAAGCTGCCATA
CTACCAGGAAAATTAGAGCTGTGTTTCAAGATGACCAAGGGAGTTTATCACCAGCCCGGAGACTTCAATAG
ATGATGGCCTTGGATCTCAGTATCCTTTAAAGAAAGATTCATGTGGTGTGATGATTTCTTTTCAAGTCTTCC
ACCCTTTACCTGGAGCAAACCAAGCCTGGCCACACCCCTATATTTGCGACATCTTCACTACCTCCACTA
GACTGGCCTTTACCAGCTCATTTTGGACAATGTGAAGTAAAATAGAAGTGAACCTAAAACCTCATCATC
GAGCCCATATGAAACTGAAGGTAGCCGAGGGGAGTAAAAGCATCTACTGGGGACATCCTGTTGTGAA
GCTCCTGGGCTATAACGAAAAGCCAATAAATCTACAAATGTTTATTGGGACAGCAGATGATCGATATTTA



[View online »](#)

CGACCTCATGCATTTTACCAGGTGCATCGAATCACTGGGAAGACAGTCGCTACTGCAAGCCAAGAGATAA
 TAATTGCCAGTACAAAAGTTCTGGAAATCCACTTCTTCTGAAAATAATATGTCAGCCAGTATTGATTG
 TGCAGGTATTTTAAAACCTCCGCAATTCAGATATAGAATTCGAAAAGGAGAACTGATATTGGCAGAAAAG
 AATACTAGAGTACGACTTGTGTTTCGTGTACACATCCCACAGCCCAGTGGAAAAGTCTTTCTCTGCAGA
 TAGCCTCTATACCCGTTGAGTGTCCCAGCGGTCTGCTCAAGAACTTCTCATATTGAGAAGTACAGTAT
 CAACAGTTGTTCTGTAATGGAGGTCAAGAAATGGTTGTGACTGGATCTAATTTTCTCCAGAATCCAAA
 ATCATTTTTCTTGA AAAAGGACAAGATGGACGACCTCAGTGGGAGGTAGAAGGGAAGATAATCAGGGAAA
 AATGTC AAGGGGCTCACATTGCTCTTGAAGTTCTCCATATCATAACCCAGCAGTTACAGCTGCAGTGCA
 GGTGCACTTTTATCTTTGCAATGGCAAGAGGAAAAAAGCCAGTCTCAACGTTTTACTTATACACAGTT
 TTGATGAAGCAAGAACACAGAGAAGAGATTGATTTGTCTTCAGTTCATCTTTGCCTGTGCCTCATCCTG
 CTCAGACCCAGAGGCCTTCTCTGATTGAGGTGTTTACATGACAGTGTACTGTCAGGACAGAGAAGTTT
 GATTTGCTCCATCCCACAAACATATGCATCCATGGTGACCTCATCCATCTGCCACAGTTGCAGTGTAGA
 GATGAGAGTGTAGTAAAGAACAGCATATGATTCCTTCTCAATTGTACACCAGCCTTTTCAAGTACAC
 CAACACCTCCTGTGGGGTCTTCTATCAGCCTATGCAAATAATGTTGTGTACAATGGACCAACTGTCT
 TCCTATTAATGCTGCCTCTAGTCAAGAATTTGATTCAGTTTTGTTTCAGCAGGATGCAACTCTTTCTGGT
 TTAGTGAATCTTGCTGTCAACCACTGTATCCATACCATTTTCTTCAAATTCAGGCTCAACAGGAC
 ATCTCTTAGCCATACACCTCATTCTGTGCATACCCTGCCTCATCTGCAATCAATGGGATATCATTGTTT
 AAATACAGGACAAAGATCTTTTCTTCCAGTGGCTGACCAGATTACAGGTGAGCCTTCGTCTCAGTTA
 CAACCTATTACATATGGTCCTTACATTCAGGGTCTGCTACAACAGCTTCCCCAGCAGCTTCTCATCCCT
 TGGCTAGTTCACCGCTTCTGGGCCACCATCTCCTCAGCTTACGCTTACCAATCTCCTAGCTC
 AGGAACTGCCTCATCACCCTCCAGCCACCAGAATGCATTCTGGACAGCACTCAACTCAAGCACAAGT
 ACGGGCCAGGGGGTCTTCTGCACCTTCACTTAATATGTACAGTTTGTGTGATCCAGCGCTATTTT
 CACCTGATGGGCAACTGTGAGCATTAACTGAACAGAAAGATCGAGAGCCTAACTTGAACACCTTGG
 TCTGAGGACATCACTTTAGATGATGTGAACGAGATAATTGGGAGAGACATGTCCAGATTTCTGTTTCC
 CAAGGAGCAGGGGTGAGCAGGCAGGCTCCCTCCGAGTCTGAGTCCCTGGATTAGGAAGATCTGATG
 GGCTC

ACGCGTACGCGGCCGCTCGAGCAGAACTCATCTCAGAAGAGGATCTGGCAGCAAATGATATCCTGGATT
 ACAAGGATGACGACGATAAGGTTTAA

Protein Sequence:

>RC200357 protein sequence
 Red=Cloning site Green=Tags(s)

MTTANCGAHDELDFKLVFGEDGAPAPPPGSRPADLEPDDCASIIYIFNVDPPPSTLTTPLCLPHHGLPSH
 SSVLSPSFQLQSHKNYEGTCEIPESKYSPLGGPKPFECPSIQITSI SPNCHQELDAHEDDLQINDPEREF
 LERPSRDHLYLPLEPSYRESSLSPSPASSISSRSWFS DASSCESLSHIYDDVDELNEAAARFTLGSPLT
 SPGGSPGGCPGEETWHQYGLGHSLSRQSPCHSPRSSVTDENWLSRPPASGPSSRPTSPCGKRRHSSAE
 VCYAGSLSPHSPVPSPGHSPRGSVTEDTWLNASVHGGSGLGPVFPFQYCVETDIPLKTRKTS EDQAAI
 LPGKLELCSDDQGSLS PARETSIDDLGSGYPLKKDSCGDQFLSVPSPFTWSKPKPGHTPIFRTSSLPLPL
 DWPLPAHFGQCELKIEVQPKTHHRAHYETEGSRGAVKASTGGHPVVKLLGYNEKPINLQMFIGTADDRYL
 RPHAFYQVHRITGKTVATASQEI IIASTKVLEIPLPENMNSASIDCAGILKLRNSDIELRKGETDIGRK
 NTRVRLVFRVHIPQPSGKVL SLQIASIPVECSQRS AQELPHIEKYSINSCSVNGGHEMVVTSNLFPE SK
 IIFLEKQDGRPQWEVEGKI IREKCGAHIVLEVPYHNP AVTAAVQVHFYLCNGKRKKSQSQRFTYTPV
 LMKQEHREEIDLSSVPSLPVPHPAQTQRPSSDSGCSHDSVLSGQRSLICSIPQTYASMVTS S HLPQLQCR
 DESVSKEQHMI P S P I V H Q P F Q V T P P V G S S Y Q P M Q T N V V Y N G P T C L P I N A A S S Q E F D S V L F Q Q D A T L S G
 L V N L G C Q P L S S I P F H S S N S G S T G H L L A H T P H S V H T L P H L Q S M G Y H C S N T G Q R S L S S P V A D Q I T G Q P S S Q L
 Q P I T Y G P S H S G S A T T A S P A A S H P L A S S P L S G P P S P Q L Q P M P Y Q S P S S G T A S S P S P A T R M H S G Q H S T Q A Q S
 T G Q G G L S A P S S L I C H S L C D P A S F P P D G A T V S I K P E P E D R E P N F A T I G L Q D I T L D D V N E I I G R D M S Q I S V S
 Q G A G V S R Q A P L P S P E S L D L G R S D G L

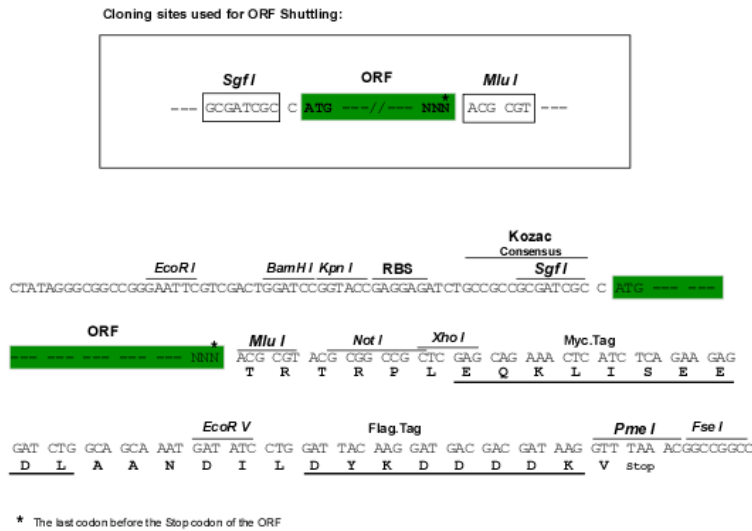
TRTRPLEQKLI SEEDLAANDILDYKDDDDKV

Chromatograms:

https://cdn.origene.com/chromatograms/mk6291_f01.zip

Restriction Sites: SgfI-MluI

Cloning Scheme:



ACCN: NM_173165

ORF Size: 3225 bp

OTI Disclaimer: The molecular sequence of this clone aligns with the gene accession number as a point of reference only. However, individual transcript sequences of the same gene can differ through naturally occurring variations (e.g. polymorphisms), each with its own valid existence. This clone is substantially in agreement with the reference, but a complete review of all prevailing variants is recommended prior to use. [More info](#)

OTI Annotation: This clone was engineered to express the complete ORF with an expression tag. Expression varies depending on the nature of the gene.

Components: The ORF clone is ion-exchange column purified and shipped in a 2D barcoded Matrix tube containing 10ug of transfection-ready, dried plasmid DNA (reconstitute with 100 ul of water).

Reconstitution Method:

1. Centrifuge at 5,000xg for 5min.
2. Carefully open the tube and add 100ul of sterile water to dissolve the DNA.
3. Close the tube and incubate for 10 minutes at room temperature.
4. Briefly vortex the tube and then do a quick spin (less than 5000xg) to concentrate the liquid at the bottom.
5. Store the suspended plasmid at -20°C. The DNA is stable for at least one year from date of shipping when stored at -20°C.

Note: Plasmids are not sterile. For experiments where strict sterility is required, filtration with 0.22um filter is required.

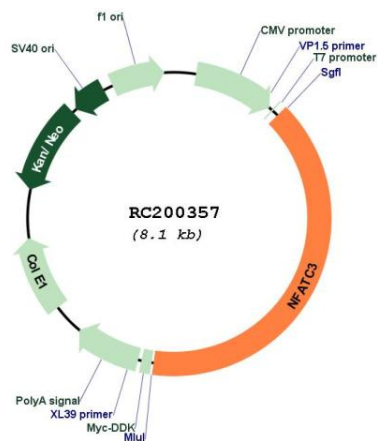
RefSeq: [NM_173165.3](#)

RefSeq Size: 6349 bp

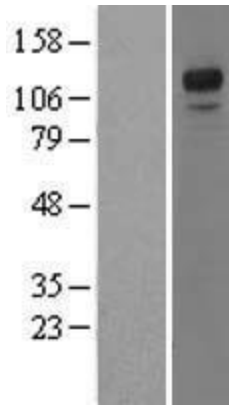
RefSeq ORF: 3228 bp

Locus ID: 4775
UniProt ID: [Q12968](#)
Cytogenetics: 16q22.1
Protein Families: Druggable Genome, Transcription Factors
Protein Pathways: Axon guidance, B cell receptor signaling pathway, Natural killer cell mediated cytotoxicity, T cell receptor signaling pathway, VEGF signaling pathway, Wnt signaling pathway
MW: 115.6 kDa
Gene Summary: The product of this gene is a member of the nuclear factors of activated T cells DNA-binding transcription complex. This complex consists of at least two components: a preexisting cytosolic component that translocates to the nucleus upon T cell receptor (TCR) stimulation and an inducible nuclear component. Other members of this family participate to form this complex also. The product of this gene plays a role in the regulation of gene expression in T cells and immature thymocytes. Several transcript variants encoding distinct isoforms have been identified for this gene. [provided by RefSeq, Nov 2010]

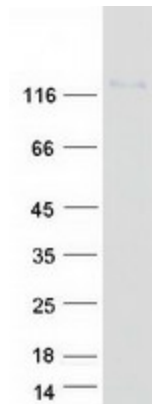
Product images:



Circular map for RC200357



Western blot validation of overexpression lysate (Cat# [LY417912]) using anti-DDK antibody (Cat# [TA50011-100]). Left: Cell lysates from untransfected HEK293T cells; Right: Cell lysates from HEK293T cells transfected with [RC212523] using transfection reagent MegaTran 2.0 (Cat# [TT210002]).



Coomassie blue staining of purified NFATC3 protein (Cat# [TP300357]). The protein was produced from HEK293T cells transfected with NFATC3 cDNA clone (Cat# RC200357) using MegaTran 2.0 (Cat# [TT210002]).