

Product datasheet for RC200355

PAFAH2 (NM_000437) Human Tagged ORF Clone

Product data:

Product Type:	Expression Plasmids
Product Name:	PAFAH2 (NM_000437) Human Tagged ORF Clone
Tag:	Myc-DDK
Symbol:	PAFAH2
Synonyms:	HSD-PLA2
Mammalian Cell Selection:	Neomycin
Vector:	pCMV6-Entry (PS100001)
E. coli Selection:	Kanamycin (25 ug/mL)
ORF Nucleotide Sequence:	>RC200355 ORF sequence Red=Cloning site Blue=ORF Green=Tags(s)

TTTTGTAATACGACTCACTATAGGGCGGCCGGAATTCGTCGACTGGATCCGGTACCGAGGAGATCTGCC
GCC**CGATCGCC**

ATGGGGTCAACCACTGTGGGCTTCCACCTGTCACAGGACCCACCTCGTAGGCTGTGGGATGTGA
TGGAGGGTCAGAACTCCAGGGGAGCTTCTTCGACTCTTCTACCCCTGCCAAAAGGCAGAGGAGACCAT
GGAGCAGCCCTGTGGATTCCCCGCTATGAGTACTGCACTGGCCTGGCCGAGTACCTGCAGTTTAATAAG
CGCTGCGGGGGCTTGTCTTCAACCTGGCGGTGGGATCTTGTGCGCTGCCTGTTAGCTGGAATGGCCCT
TTAAGACAAAGGACTCTGGATACCCCTTGATCATCTTCTCCCATGGCCTAGGAGCCTTCAGGACTTTGTA
TTCAGCCTTCTGCATGGAGCTGGCCTCACGTGGCTTTGTGGTTGCTGTGCCAGAGCACAGGGACCGGTCA
GCGGCAACCACCTATTTCTGCAAGCAGGCCCCAGAAGAGAACCAGCCACCAATGAATCGTGCAGGAGG
AATGGATCCCTTCCGTCGAGTTGAGGAAGGGGAGAAGGAATTTTCATGTTTCGGAATCCCCAGGTGCATCA
GCGGGTAAGCGAGTGTTCAGGGTGTGAAGATCCTGCAAGAGGTCACCTGCTGGGAGACTGTCTTCAAC
ATCTTGCCTGGTGGCTTGGATCTGATGACTTTGAAGGGCAACATTGACATGAGCCGTGTGGCTGTGATGG
GACATTCATTTGGAGGGCCACAGCTATTCTGGCTTTGGCCAAGGAGACCCAATTTCCGTTGTGGCTGGC
TCTGGATGCTTGGATGTTTCTCTGGAACGTGACTTTTACCCCAAGGCCCGAGGACCTGTGTTCTTTATC
AATACTGAGAAATTCAGACAATGGAGAGTGTCAATTTGATGAAGAAGATATGTGCCAGCATGAACAGT
CTAGGATCATAACCGTTCTTGGTTCTGTTTCATCGGAGTCAAAGTACTTTGCTTTTGTGACTGGCAACTT
GATTGGTAAATCTTCTCCACTGAAACCGTGGGAGCCTGGACCCCTATGAAGGGCAGGAGTTATGGTA
CGGGCCATGTTGGCCTTCTGCAGAAGCACCTCGACCTGAAAGAAGACTATAATCAATGGAACAACCTTA
TTGAAGGCATTGGACCGTCTCACCCAGGGGCCCCACCATCTGTCCAGCCTG

ACGCGTACGCGGCCGCTCGAGCAGAACTCATCTCAGAAGAGGATCTGGCAGCAATGATATCCTGGATT
ACAAGGATGACGACGATAAGGTTTAA



[View online »](#)

Protein Sequence: >RC200355 protein sequence
Red=Cloning site Green=Tags(s)

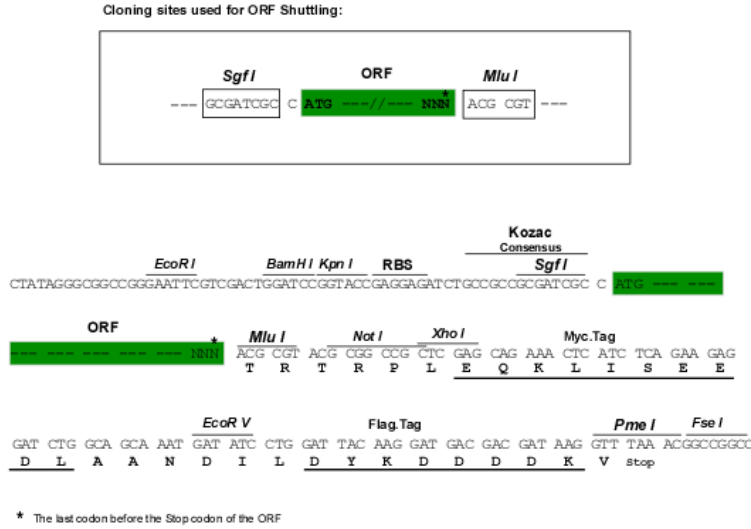
MGVNQSVGFPPVTGPHLVGCGDVMEGQNLQGSFFRLFYPCQKAEETMEQPLWIPRYEYCTGLAEYLQFNK
 RCGLLFNLA VGSCRLPVS WNGPFKTKDSGYPLIIFSHGLGAFRTLYSAFCMELASRGFVAVPEHRDRS
 AATTYFCCKQAPEENQPTNESLQEEWIPFRRVEEGEKEFHVRNPQVHQRVSECLRVLKILQEVTAGQTVFN
 ILPGGLDLMTLKGNI DMSRVAVMGHSFGGATAILALAKETQFCAVALDAMWFPLERDFYPKARGPVFFI
 NTEKFQTMESVNLMMKKAQHEQSRIITVLGSHRSQTDFAFVTGNLIGKFFSTETRGS LDPYEQEVMY
 RAMLAF LQKHLDLKEDYNQWNNLIEGIGPSLTPGAPHLSSL

TRTRPLEQKLISEEDLAANDILDYKDDDDKV

Chromatograms: https://cdn.origene.com/chromatograms/mk6071_e11.zip

Restriction Sites: SgfI-MluI

Cloning Scheme:



ACCN: NM_000437

ORF Size: 1176 bp

OTI Disclaimer: The molecular sequence of this clone aligns with the gene accession number as a point of reference only. However, individual transcript sequences of the same gene can differ through naturally occurring variations (e.g. polymorphisms), each with its own valid existence. This clone is substantially in agreement with the reference, but a complete review of all prevailing variants is recommended prior to use. [More info](#)

OTI Annotation: This clone was engineered to express the complete ORF with an expression tag. Expression varies depending on the nature of the gene.

Components: The ORF clone is ion-exchange column purified and shipped in a 2D barcoded Matrix tube containing 10ug of transfection-ready, dried plasmid DNA (reconstitute with 100 ul of water).

Reconstitution Method:

1. Centrifuge at 5,000xg for 5min.
2. Carefully open the tube and add 100ul of sterile water to dissolve the DNA.
3. Close the tube and incubate for 10 minutes at room temperature.
4. Briefly vortex the tube and then do a quick spin (less than 5000xg) to concentrate the liquid at the bottom.
5. Store the suspended plasmid at -20°C. The DNA is stable for at least one year from date of shipping when stored at -20°C.

Note: Plasmids are not sterile. For experiments where strict sterility is required, filtration with 0.22um filter is required.

RefSeq: [NM_000437.4](#)

RefSeq Size: 3581 bp

RefSeq ORF: 1179 bp

Locus ID: 5051

UniProt ID: [Q99487](#)

Cytogenetics: 1p36.11

Domains: PAF-AH_p_II

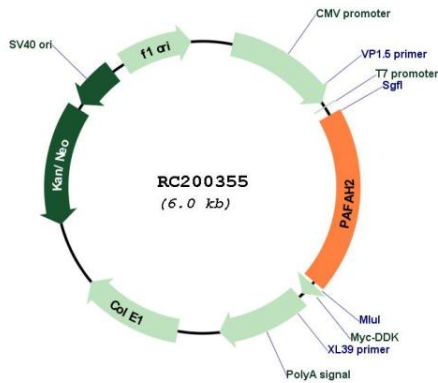
Protein Families: Druggable Genome

Protein Pathways: Ether lipid metabolism, Metabolic pathways

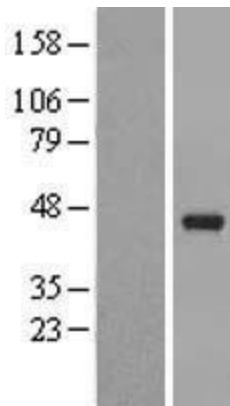
MW: 44 kDa

Gene Summary: This gene encodes platelet-activating factor acetylhydrolase isoform 2, a single-subunit intracellular enzyme that catalyzes the removal of the acetyl group at the SN-2 position of platelet-activating factor (identified as 1-O-alkyl-2-acetyl-sn-glycerol-3-phosphorylcholine). However, this lipase exhibits a broader substrate specificity than simply platelet activating factor. Two other isoforms of intracellular platelet-activating factor acetylhydrolase exist, and both are multi-subunit enzymes. Additionally, there is a single-subunit serum isoform of this enzyme. [provided by RefSeq, Jul 2008]

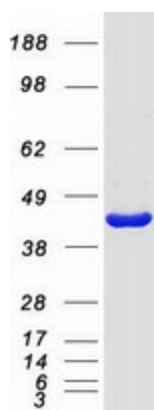
Product images:



Circular map for RC200355



Western blot validation of overexpression lysate (Cat# [LY424709]) using anti-DDK antibody (Cat# [TA50011-100]). Left: Cell lysates from untransfected HEK293T cells; Right: Cell lysates from HEK293T cells transfected with RC200355 using transfection reagent MegaTran 2.0 (Cat# [TT210002]).



Coomassie blue staining of purified PAFAH2 protein (Cat# [TP300355]). The protein was produced from HEK293T cells transfected with PAFAH2 cDNA clone (Cat# RC200355) using MegaTran 2.0 (Cat# [TT210002]).