

## Product datasheet for RC200352

### RAB11A (NM\_004663) Human Tagged ORF Clone

#### Product data:

Product Type:	Expression Plasmids
Product Name:	RAB11A (NM_004663) Human Tagged ORF Clone
Tag:	Myc-DDK
Symbol:	RAB11A
Synonyms:	YL8
Mammalian Cell Selection:	Neomycin
Vector:	pCMV6-Entry (PS100001)
E. coli Selection:	Kanamycin (25 ug/mL)
ORF Nucleotide Sequence:	>RC200352 ORF sequence Red=Cloning site Blue=ORF Green=Tags(s)

TTTTGTAATACGACTCACTATAGGGCGCCGGGAATTCGTCGACTGGATCCGGTACCGAGGAGATCTGCC  
GCC**CGATCGCC**

ATGGGCACCCGCGACGACGAGTACGACTACCTCTTTAAAGTTGTCCTTATTGGAGATTCTGGTGTGGAA  
AGAGTAATCTCCTGTCTCGATTTACTCGAAATGAGTTTAACTGGAAAGCAAGAGCACCATTGGAGTAGA  
GTTTGCAACAAGAAGCATCCAGGTTGATGGAAAAACAATAAAGGCACAGATATGGGACACAGCAGGGCAA  
GAGCGATATCGAGCTATAACATCAGCATATTATCGTGGAGCTGTAGGTGCCTTATTGGTTTATGACATTG  
CTAAACATCTCACATATGAAAATGTAGAGCGATGGCTGAAAGAAGTACGAGATCATGCTGATAGTAACAT  
TGTTATCATGCTTGTGGCAATAAGAGTGATCTACGTCATCTCAGGGCAGTTCCTACAGATGAAGCAAGA  
GCTTTTGCAGAAAAGAATGGTTTGTCAATCATTGAAACTTCGGCCCTAGACTCTACAAATGTAGAAGCTG  
CTTTTCAGACAATTTAACAGAGATTTACCGCATTGTTTCTCAGAAGCAAATGTCAGACAGACGCGAAAA  
TGACATGTCTCCAAGCAACAATGTGGTTCTATTCATGTTCCACCAACCACTGAAAAAAGCCAAAGGTG  
CAGTGCTGTCAGAACATC

**ACGCGT**ACGCGGCGCTCGAGCAGAAACTCATCTCAGAAGAGGATCTGGCAGCAAATGATATCCTGGATT  
ACAAGGATGACGACGATAAGGTTTAA



[View online »](#)



**OTI Disclaimer:** Due to the inherent nature of this plasmid, standard methods to replicate additional amounts of DNA in E. coli are highly likely to result in mutations and/or rearrangements. Therefore, OriGene does not guarantee the capability to replicate this plasmid DNA. Additional amounts of DNA can be purchased from OriGene with batch-specific, full-sequence verification at a reduced cost. Please contact our customer care team at [custsupport@origene.com](mailto:custsupport@origene.com) or by calling 301.340.3188 option 3 for pricing and delivery.

The molecular sequence of this clone aligns with the gene accession number as a point of reference only. However, individual transcript sequences of the same gene can differ through naturally occurring variations (e.g. polymorphisms), each with its own valid existence. This clone is substantially in agreement with the reference, but a complete review of all prevailing variants is recommended prior to use. [More info](#)

**OTI Annotation:** This clone was engineered to express the complete ORF with an expression tag. Expression varies depending on the nature of the gene.

**Components:** The ORF clone is ion-exchange column purified and shipped in a 2D barcoded Matrix tube containing 10ug of transfection-ready, dried plasmid DNA (reconstitute with 100 ul of water).

**Reconstitution Method:**

1. Centrifuge at 5,000xg for 5min.
2. Carefully open the tube and add 100ul of sterile water to dissolve the DNA.
3. Close the tube and incubate for 10 minutes at room temperature.
4. Briefly vortex the tube and then do a quick spin (less than 5000xg) to concentrate the liquid at the bottom.
5. Store the suspended plasmid at -20°C. The DNA is stable for at least one year from date of shipping when stored at -20°C.

**RefSeq:** [NM\\_004663.5](#)

**RefSeq Size:** 4943 bp

**RefSeq ORF:** 651 bp

**Locus ID:** 8766

**UniProt ID:** [P62491](#)

**Cytogenetics:** 15q22.31

**Domains:** ras, RAN, RAS, RHO, RAB

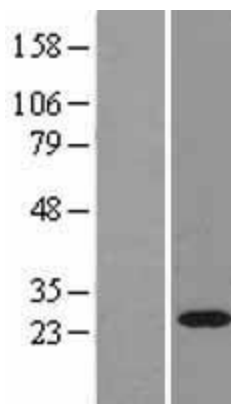
**Protein Families:** Druggable Genome

**Protein Pathways:** Endocytosis

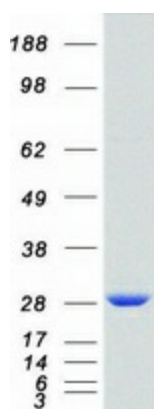
**MW:** 24.4 kDa

**Gene Summary:** The protein encoded by this gene belongs to the Rab family of the small GTPase superfamily. It is associated with both constitutive and regulated secretory pathways, and may be involved in protein transport. Two transcript variants encoding different isoforms have been found for this gene. [provided by RefSeq, May 2011]

## Product images:



Western blot validation of overexpression lysate (Cat# [LY401478]) using anti-DDK antibody (Cat# [TA50011-100]). Left: Cell lysates from untransfected HEK293T cells; Right: Cell lysates from HEK293T cells transfected with RC200352 using transfection reagent MegaTran 2.0 (Cat# [TT210002]).



Coomassie blue staining of purified RAB11A protein (Cat# [TP300352]). The protein was produced from HEK293T cells transfected with RAB11A cDNA clone (Cat# RC200352) using MegaTran 2.0 (Cat# [TT210002]).