

Product datasheet for **RC200351**

RAB33A (NM_004794) Human Tagged ORF Clone

Product data:

Product Type: Expression Plasmids
 Product Name: RAB33A (NM_004794) Human Tagged ORF Clone
 Tag: Myc-DDK
 Symbol: RAB33A
 Synonyms: RabS10
 Mammalian Cell Selection: Neomycin
 Vector: pCMV6-Entry (PS100001)
 E. coli Selection: Kanamycin (25 ug/mL)
 ORF Nucleotide Sequence: >RC200351 ORF sequence
 Red=Cloning site Blue=ORF Green=Tags(s)

TTTTGTAATACGACTCACTATAGGGCGGCCGGAATTCGTCGACTGGATCCGGTACCGAGGAGATCTGCC
 GCC**CGATCGCC**

ATGGCGCAGCCCATCCTGGGCCATGGGAGCCTGCAGCCCGCCTCGGCCGCTGGCCTGGCGTCCCTGGAGC
 TCGACTCGTCGCTGGACCAGTACGTGCAGATTCGCATCTTCAAATAATCGTGATTGGGGACTCCAACGT
 GGGCAAGACCTGCCTGACCTTCCGCTTCTGCGGGGTACCTTCCAGACAAGACTGAAGCCACCATCGGC
 GTGGACTTCAGGGAGAAGACCGTGAAATCGAGGGCGAGAAGATCAAGGTTCAAGGTGTGGACACAGCAG
 GTCAGGAACGTTCCGCAAAGCATGGTCGAGCATTACTACCGCAACGTACATGCCGTGGTCTTCGTCTA
 TGACGTACCAAGATGACATCTTTCACCAACCTCAAATGTGGATCCAAGAATGCAATGGGCATGCTGTG
 CCCCCACTAGTCCCCAAAGTGCTTGTGGCAACAAGTGTGACTTGAGGGAACAGATCCAGGTGCCCTCCA
 ACTTAGCCCTGAAATTTGCTGATGCCCAACAATGCTCTTGTGTTGAGACATCGGCCAAGGACCCCAAAGA
 GAGCCAGAACGTGGAGTCGATTTTCATGTGCTTGGCTTGGCGATTGAAGGCCAGAAATCCCTGCTGTAT
 CGTGATGCTGAGAGGCAGCAGGGGAAGGTGCAGAACTGGAGTCCCACAGGAAGCTAACAGTAAAATCT
 CCTGTCCTTG

ACGCGTACGCGGCCGCTCGAGCAGAACTCATCTCAGAAGAGGATCTGGCAGCAAATGATATCCTGGATT
 ACAAGGATGACGACGATAAGGTTTAA



[View online »](#)

Protein Sequence: >RC200351 protein sequence
 Red=Cloning site Green=Tags(s)

MAQPILGHGSLQPASAAGLASLELDSSLDQYVQIRIFKIIIVIGDSNVGKTCLTFRFCGGTFPDKTEATIG
 VDFREKTVEIEGEKIKVQVWDTAGQERFRKSMVEHYRNVHAVVFVYDVTMKTSTNLKMWIQECNGHAV
 PPLVPKVLVGNKCDLREQIQVPSNLALKFADAHNMLLFETSAKDPKESQNVESIFMCLACRLKAQKSLLY
 RDAERQQGKVQKLEFPQEANSKTSRPC

TRTRPLEQKLISEEDLAANDILDYKDDDDKV

Chromatograms: https://cdn.origene.com/chromatograms/mk6394_e11.zip

Restriction Sites: SgfI-MluI

Cloning Scheme:

Cloning sites used for ORF Shuttling:



* The last codon before the Stop codon of the ORF

ACCN: NM_004794

ORF Size: 711 bp

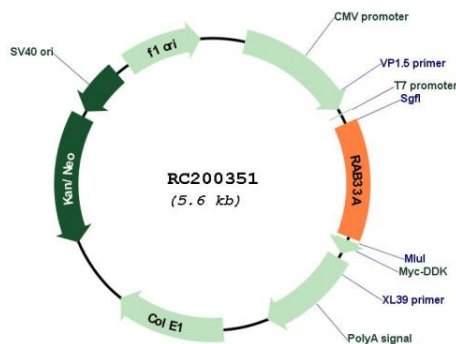
OTI Disclaimer: Due to the inherent nature of this plasmid, standard methods to replicate additional amounts of DNA in E. coli are highly likely to result in mutations and/or rearrangements. Therefore, OriGene does not guarantee the capability to replicate this plasmid DNA. Additional amounts of DNA can be purchased from OriGene with batch-specific, full-sequence verification at a reduced cost. Please contact our customer care team at custsupport@origene.com or by calling 301.340.3188 option 3 for pricing and delivery.

The molecular sequence of this clone aligns with the gene accession number as a point of reference only. However, individual transcript sequences of the same gene can differ through naturally occurring variations (e.g. polymorphisms), each with its own valid existence. This clone is substantially in agreement with the reference, but a complete review of all prevailing variants is recommended prior to use. [More info](#)

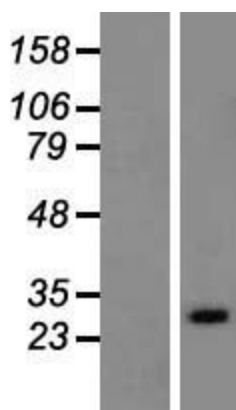
OTI Annotation: This clone was engineered to express the complete ORF with an expression tag. Expression varies depending on the nature of the gene.

- Components:** The ORF clone is ion-exchange column purified and shipped in a 2D barcoded Matrix tube containing 10ug of transfection-ready, dried plasmid DNA (reconstitute with 100 ul of water).
- Reconstitution Method:**
1. Centrifuge at 5,000xg for 5min.
 2. Carefully open the tube and add 100ul of sterile water to dissolve the DNA.
 3. Close the tube and incubate for 10 minutes at room temperature.
 4. Briefly vortex the tube and then do a quick spin (less than 5000xg) to concentrate the liquid at the bottom.
 5. Store the suspended plasmid at -20°C. The DNA is stable for at least one year from date of shipping when stored at -20°C.
- Note:** Plasmids are not sterile. For experiments where strict sterility is required, filtration with 0.22um filter is required.
- RefSeq:** [NM_004794.3](#)
- RefSeq Size:** 1128 bp
- RefSeq ORF:** 714 bp
- Locus ID:** 9363
- UniProt ID:** [Q14088](#)
- Cytogenetics:** Xq26.1
- Protein Families:** Druggable Genome
- MW:** 26.6 kDa
- Gene Summary:** The protein encoded by this gene belongs to the small GTPase superfamily, Rab family. It is GTP-binding protein and may be involved in vesicle transport. [provided by RefSeq, Jul 2008]

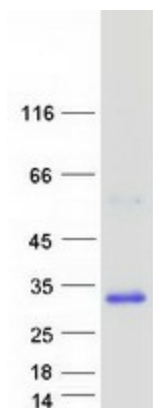
Product images:



Circular map for RC200351



Western blot validation of overexpression lysate (Cat# [LY417747]) using anti-DDK antibody (Cat# [TA50011-100]). Left: Cell lysates from untransfected HEK293T cells; Right: Cell lysates from HEK293T cells transfected with RC200351 using transfection reagent MegaTran 2.0 (Cat# [TT210002]).



Coomassie blue staining of purified RAB33A protein (Cat# [TP300351]). The protein was produced from HEK293T cells transfected with RAB33A cDNA clone (Cat# RC200351) using MegaTran 2.0 (Cat# [TT210002]).