

## Product datasheet for **RC200350**

### **RABGGTA (NM\_182836) Human Tagged ORF Clone**

#### **Product data:**

Product Type:	Expression Plasmids
Product Name:	RABGGTA (NM_182836) Human Tagged ORF Clone
Tag:	Myc-DDK
Symbol:	RABGGTA
Synonyms:	PTAR3
Mammalian Cell Selection:	Neomycin
Vector:	pCMV6-Entry (PS100001)
E. coli Selection:	Kanamycin (25 ug/mL)



[View online »](#)

**ORF Nucleotide Sequence:**

>RC200350 ORF sequence  
 Red=Cloning site Blue=ORF Green=Tags(s)

TTTTGTAATACGACTCACTATAGGGCGGCCGGGAATTCGTCGACTGGATCCGGTACCGAGGAGATCTGCC  
 GCC**CGCATCGCC**

ATGCACGGACGCCTGAAGGTGAAGACGTCAGAAGAGCAGGCGGAGGCCAAAAGGCTAGAGCGAGAGCAGA  
 AGCTGAAGCTATACCAGTCAGCCACCCAGGCCGTATTCCAGAAGCGCCAGGCTGGTGAGCTGGATGAGTC  
 CGTGCTGGAAGTACAAGCCAGATTCTGGGAGCCAACCCCTGATTTTGCCACCCTCTGGAAGTCCCGACGA  
 GAGGTGCTCCAGCAGCTGGAGACTCAGAAGTCTCCTGAAGAGTTGGCTGCTCTGGTGAAGGCAGAACTGG  
 GCTTCTGGAGAGCTGCCTGCGGGTGAACCCCAAGTCTTATGGTACCTGGCACCACCGATGCTGGCTGCT  
 AGGCCGCCTGCCTGAGCCCAACTGGACCCGAGAGCTGGAGCTCTGTGCCCGTTTCTGGAGGTGGATGAG  
 CGGAACTTCACTGCTGGGACTATCGGCGGTTTGTGCCACACAGGCAGCCGTGCCCCCTGCAGAAGAGC  
 TAGCCTTCACTGACAGCCTCATACCCGAAACTTCTCAACTACTTCTTCTGGCATTACCGCTCCTGCTCT  
 CTTGCCCCAGCTGCACCCAGCCGGATTCTGGACCACAGGGGCGCTCCCTGAGGATGTGCTGCTCAA  
 GAGCTGGAGCTGGTGCAGAAATGCCTTCTCACTGACCCCAATGACCAGAGTGCCTGGTTTTATCACCGTT  
 GGCTCCTAGGCCGAGCTGACCCCAAGGATGCACTGCGCTGCCTGCATGTGAGCCGGGACGAGGCCTGCT  
 GACTGTCTCCTTCTCGGCCCTCTTAGTGGGCTCCAGGATGGAGATCTTGCTGCTCATGGTTGATGAT  
 TCTCCCTGATTGTGGAGTGGAGGACCCAGATGGCAGGAACCGGCCAGCCATGTCTGGCTCTGTGACC  
 TGCTGCTGCCTCCCTCAACGACCAGTTGCCCAACATACATTTTCGCGTCATTTGGACAGCAGGCAGTGT  
 CCAGAAAGAAATGCGTGCTTTTAAAAGGCCGCCAGGAGGGCTGGTGCCGGGACTCCACGACAGACGAGCAG  
 CTATTCAAGTGTGAGCTGTCAGTGGAGAAGTCCACAGTGTGAGTCTGAGCTGGAATCCTGTAAGGAGC  
 TGCAGGAGCTGGAGCCTGAGAATAAATGGTGCCTGCTTACCATCATCTGCTGATGCGGGCAGCAGCC  
 CCTGCTGTATGAGAAGGAGACCCTGCAGTACTTCCAGACCCTCAAGGCCGTGGACCCATGCGGGCAACG  
 TATCTGGATGACCTGCGCAGCAAGTTCTTGTGGAGAATAGCGTGTCAAGATGGAGTATGCCGAGGTGC  
 GTGTGCTGCACCTGGCTCACAAGGATCTGACAGTGTCTGCCATCTGGAACAGCTGCTCTTGGTACCCCA  
 TCTTGACTTGTACACAATCGCCTCCGAACCTGCCACCTGCACTGGCTGCCCTGCGCTGCCTTGAAGTG  
 CTGCAGGCCAGTGATAATGCCATAGAGTCCCTGGACGGCGTCACCAACCTACCCCGGCTGCAGGAGCTGC  
 TACTGTGCAACAACCGCCTCCAGCAGCCTGCAGTGTCCAGCCTTTCCTCCTGCCCCAGGCTGGTCTCT  
 CCTCAACCTGCAGGTAACCCGCTGTGCCAAGCGGTGGGCATCTTGGAGCAACTGGCTGAACTGCTGCCT  
 TCAGTTAGCAGCGTCTCACC

**ACGCGT**ACGCGGCCGCTCGAGCAGAAACTCATCTCAGAAGAGGATCTGGCAGCAAATGATATCCTGGATT  
 ACAAGGATGACGACGATAAGGTTTAA

**Protein Sequence:**

>RC200350 protein sequence  
 Red=Cloning site Green=Tags(s)

MHGRLKVKTSEEQAEAKRLEREQKLLYQSATQAVFQKRQAGELDESIVLELTSQILGANPDFATLWNCRR  
 EVLQQLETQKSPEELAALVKAELGFLESCLRVNPKSYGTWHHRCWLLGRLPEPNWTRLELCARFLEVDE  
 RNFHCWDYRRFVATQAAVPPAEELAFDLSLITRNFSNYSSWHYRSCLLPQLHPQPDSPGQGRLPEDVLLK  
 ELELVQNAFFTPNDQSAWFYHRWLLGRADPQDALRCLHVSDEACLTVSFSRPLLVGSRMEILLMVDD  
 SPLIVEWRTPDGRNRP SHVWLCDLPAASLNDQLPQHTFRVIWTAGDVQKECVLLKGRQEGWCRDSTTDEQ  
 LFRCELVEKSTVLQSELESCKELQELEPENKWCLLTIILLMRALDPLL YEKETLQYFQTLKAVDPMRAT  
 YLDDLRSKFLLENSVLKMEYAEVRVHLAHKDLTVLCHLEQLLLVTHLDL SHNRLRTLPPALAALRCLEV  
 LQASDNATIESLDGVTNLPRQLLELLCNRLQQPAVLQPLASCPRLVLLNLQGNPLCQAVGILEQLAELLP  
 SVSSVLT

**TR**TRPLEQKLISEEDLAANDILDYKDDDDKV

**Chromatograms:**

[https://cdn.origene.com/chromatograms/mk6407\\_d10.zip](https://cdn.origene.com/chromatograms/mk6407_d10.zip)

**Restriction Sites:**

Sgfl-Mlul

**Cloning Scheme:**


**ACCN:** NM\_182836

**ORF Size:** 1701 bp

**OTI Disclaimer:** The molecular sequence of this clone aligns with the gene accession number as a point of reference only. However, individual transcript sequences of the same gene can differ through naturally occurring variations (e.g. polymorphisms), each with its own valid existence. This clone is substantially in agreement with the reference, but a complete review of all prevailing variants is recommended prior to use. [More info](#)

**OTI Annotation:** This clone was engineered to express the complete ORF with an expression tag. Expression varies depending on the nature of the gene.

**Components:** The ORF clone is ion-exchange column purified and shipped in a 2D barcoded Matrix tube containing 10ug of transfection-ready, dried plasmid DNA (reconstitute with 100 ul of water).

- Reconstitution Method:**
1. Centrifuge at 5,000xg for 5min.
  2. Carefully open the tube and add 100ul of sterile water to dissolve the DNA.
  3. Close the tube and incubate for 10 minutes at room temperature.
  4. Briefly vortex the tube and then do a quick spin (less than 5000xg) to concentrate the liquid at the bottom.
  5. Store the suspended plasmid at -20°C. The DNA is stable for at least one year from date of shipping when stored at -20°C.

**Note:** Plasmids are not sterile. For experiments where strict sterility is required, filtration with 0.22um filter is required.

**RefSeq:** [NM\\_182836.2](#)

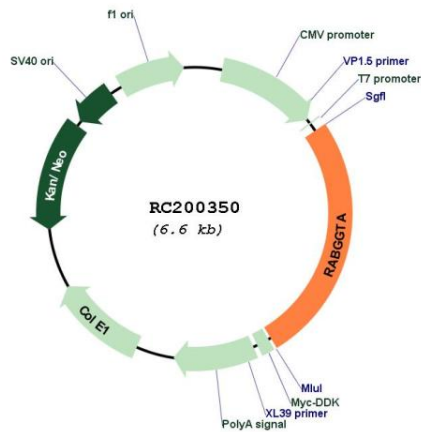
**RefSeq Size:** 1995 bp

**RefSeq ORF:** 1704 bp

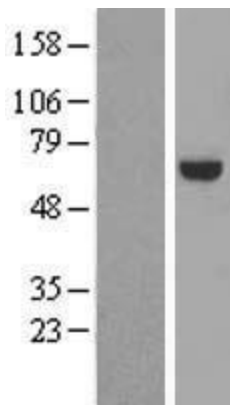
**Locus ID:** 5875

**UniProt ID:** [Q92696](#)  
**Cytogenetics:** 14q12  
**Protein Families:** Druggable Genome  
**MW:** 65.1 kDa  
**Gene Summary:** Catalyzes the transfer of a geranylgeranyl moiety from geranylgeranyl diphosphate to both cysteines of Rab proteins with the C-terminal sequence -XXCC, -XCXC and -CCXX, such as RAB1A, RAB3A, RAB5A and RAB7A.[UniProtKB/Swiss-Prot Function]

### Product images:



Circular map for RC200350



Western blot validation of overexpression lysate (Cat# [LY405377]) using anti-DDK antibody (Cat# [TA50011-100]). Left: Cell lysates from untransfected HEK293T cells; Right: Cell lysates from HEK293T cells transfected with RC200350 using transfection reagent MegaTran 2.0 (Cat# [TT210002]).