

## Product datasheet for **RC200345**

### **TRAF4 (NM\_004295) Human Tagged ORF Clone**

#### **Product data:**

Product Type:	Expression Plasmids
Product Name:	TRAF4 (NM_004295) Human Tagged ORF Clone
Tag:	Myc-DDK
Symbol:	TRAF4
Synonyms:	CART1; MLN62; RNF83
Mammalian Cell Selection:	Neomycin
Vector:	pCMV6-Entry (PS100001)
E. coli Selection:	Kanamycin (25 ug/mL)



[View online »](#)

**ORF Nucleotide Sequence:**

>RC200345 ORF sequence  
 Red=Cloning site Blue=ORF Green=Tags(s)

TTTTGTAATACGACTCACTATAGGGCGGCCGGGAATTCGTCGACTGGATCCGGTACCGAGGAGATCTGCC  
 GCC**CGGATCGCC**

ATGCCTGGCTTCGACTACAAGTTCCTGGAGAAGCCCAAGCGACGGCTGCTGTGCCACTGTGCGGAAGC  
 CCATGCGCGAGCCTGTGCAGTTTCCACCTGCGGCCACCGTTTCTGCGATACCTGCCTGCAGGAGTTCCT  
 CAGTGAAGGAGTCTTCAAGTGCCCTGAGGACCAGCTTCTCTGGACTATGCCAAGATCTACCCAGACCCG  
 GAGCTGGAAGTACAAGTATTGGGCTGCCTATCCGCTGCATCCACAGTGAGGAGGGCTGCCGCTGGAGTG  
 GGCCACTACGTACTACAGGGCCACCTGAATACCTGCAGCTTCAATGTCATTCCCTGCCCTAATCGCTG  
 CCCCATGAAGCTGAGCCGCCGTGATCTACCTGCACACTTGACAGTACTGCCCCAAGCGGCGCCTCAAG  
 TGCGAGTTTGTGGCTGTGACTTCACTGGGGAGGCTATGAGAGCCATGAGGGTATGTGCCCCAGGAGA  
 GTGTCTACTGTGAGAATAAGTGTGGTGCCTGCATGATGCGGCGGCTGCTGGCCAGCATGCCACCTCTGA  
 TGCCCCAAGCGCACTCAGCCCTGCACCTACTGCACTAAGGAGTTCGTCTTTGACACCATCCAGAGCCAC  
 CAGTACCAAGTGCCAAGGCTGCCTGTTGCTGCCCAACCAATGTGGTGTGGGCACTGTGGCTCGGAGG  
 ACCTGCCAGGCCATCTGAAGGACAGCTGTAACACCCGCCCTGGTGTCTGCCCATCAAAGACTCCGGCTG  
 CAAGCACAGGTGCCCTAAGCTGGCAATGGCAGGCATGTGGAGGAGAGTGTGAAGCCACATCTGGCCATG  
 ATGTGTGCCCTGGTGAAGCGCAACGGCAGGAGCTGCAGGAGCTTCGGCGAGAGCTGGAGGAGCTATCAG  
 TGGGCACTGATGGCGTCTCATCTGGAAGATTGGCAGCTATGGACGGCGGCTACAGGAGGCCAAGGCCAA  
 GCCCAACCTTGAGTGCTTCAAGCCAGCCTTCTACACACATAAGTATGGTTACAAGCTGCAGGTGTCTGCA  
 TTCTCAATGGCAATGGCAGTGGTGAAGGACACACCTCTCACTGTACATTGCTGTGCTGCTGGTGCCT  
 TTGACAACTCCTTGAGTGGCCCTTGGCCGCGTGCACCTTCTCCCTGCTGGATCAGAGCGACCTGG  
 GCTGGCTAAACACAGCAGTCACTGAGACCTTCCACCCGACCCAACTGGAAGAATTTCCAGAAGGCCA  
 GGCACGTGGCGGGCTCCCTGGATGAGAGTTCTCTGGGCTTGGTTATCCCAAGTTCATCTCCACCCAGG  
 ACATTCGAAAGCGAAACTATGTGCGGGATGATGCAGTCTCATCCGTGCTGCTGTTGAACTGCCCGGAA  
 GATCCTCAGC

**ACGCGT**ACGCGGCCGCTCGAGCAGAAACTCATCTCAGAAGAGGATCTGGCAGCAATGATATCCTGGATT  
 ACAAGGATGACGACGATAAGGTTTAA

**Protein Sequence:**

>RC200345 protein sequence  
 Red=Cloning site Green=Tags(s)

MPGFDYKFLKPKRRLLCPLCGKPMREPQVSTCGHRFCDTCLQEFLSEGVFKCPEDQLPLDYAKIYPDP  
 ELEVVQLGLPIRCIHSEEGCRWSGPLRHLQHLNLCFNVIPCPNRCMPKLSRRDLPAHLQHDGPKRRLK  
 CEFVCGDFSGEAYESHEGMCPQESVYECENKCGARMRRLLAQHATSECPKRTQPCTYCTKEFVFDTIQSH  
 QYQCPRLPVACPNQCGVGTVAREDLPGHLKDSNTALVLCPFKDSGCKHRCPKLAMARHVEESVKPHLAM  
 MCALVSRQRQELQELRRELEELSVGSDGVLWIKIGSYGRRLQEAkakPNLECFSPAFYTHKYGKLQVSA  
 FLNNGSGEGTHLSLYIRVLPGAFDNLLEWPFARRVTFSLLDQSDPGLAKPQHVTETFHDPNWNKFQPK  
 GTRWGLSDESSLGFGYPKFIHQDIRKRNYYRDDAVFIRA AVELPRKILS

**TR**TRPLEQKLISEEDLAANDILDYKDDDDKV

**Chromatograms:**

[https://cdn.origene.com/chromatograms/mk6216\\_d01.zip](https://cdn.origene.com/chromatograms/mk6216_d01.zip)

**Restriction Sites:**

Sgfl-MluI

**Cloning Scheme:**


**ACCN:** NM\_004295

**ORF Size:** 1410 bp

**OTI Disclaimer:** The molecular sequence of this clone aligns with the gene accession number as a point of reference only. However, individual transcript sequences of the same gene can differ through naturally occurring variations (e.g. polymorphisms), each with its own valid existence. This clone is substantially in agreement with the reference, but a complete review of all prevailing variants is recommended prior to use. [More info](#)

**OTI Annotation:** This clone was engineered to express the complete ORF with an expression tag. Expression varies depending on the nature of the gene.

**Components:** The ORF clone is ion-exchange column purified and shipped in a 2D barcoded Matrix tube containing 10ug of transfection-ready, dried plasmid DNA (reconstitute with 100 ul of water).

- Reconstitution Method:**
1. Centrifuge at 5,000xg for 5min.
  2. Carefully open the tube and add 100ul of sterile water to dissolve the DNA.
  3. Close the tube and incubate for 10 minutes at room temperature.
  4. Briefly vortex the tube and then do a quick spin (less than 5000xg) to concentrate the liquid at the bottom.
  5. Store the suspended plasmid at -20°C. The DNA is stable for at least one year from date of shipping when stored at -20°C.

**Note:** Plasmids are not sterile. For experiments where strict sterility is required, filtration with 0.22um filter is required.

**RefSeq:** [NM\\_004295.4](#)

**RefSeq Size:** 2902 bp

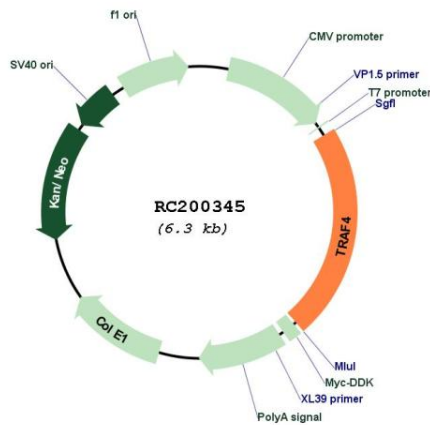
**RefSeq ORF:** 1413 bp

**Locus ID:** 9618

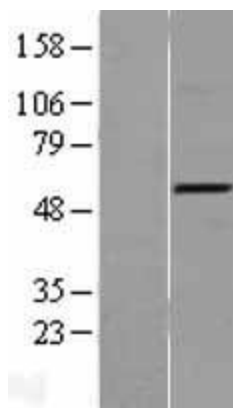
**UniProt ID:** [Q9BUZ4](#)  
**Cytogenetics:** 17q11.2  
**Domains:** zf-TRAF, RING, MATH  
**Protein Families:** Druggable Genome  
**Protein Pathways:** Pathways in cancer, Small cell lung cancer  
**MW:** 53.5 kDa

**Gene Summary:** This gene encodes a member of the TNF receptor associated factor (TRAF) family. TRAF proteins are associated with, and mediate signal transduction from members of the TNF receptor superfamily. The encoded protein has been shown to interact with neurotrophin receptor, p75 (NTR/NTSR1), and negatively regulate NTR induced cell death and NF-kappa B activation. This protein has been found to bind to p47phox, a cytosolic regulatory factor included in a multi-protein complex known as NAD(P)H oxidase. This protein thus, is thought to be involved in the oxidative activation of MAPK8/JNK. Alternatively spliced transcript variants have been observed but the full-length nature of only one has been determined. [provided by RefSeq, Jul 2008]

**Product images:**



Circular map for RC200345



Western blot validation of overexpression lysate (Cat# [LY418085]) using anti-DDK antibody (Cat# [TA50011-100]). Left: Cell lysates from untransfected HEK293T cells; Right: Cell lysates from HEK293T cells transfected with RC200345 using transfection reagent MegaTran 2.0 (Cat# [TT210002]).