

Product datasheet for **RC200336**

ZNF330 (NM_014487) Human Tagged ORF Clone

Product data:

Product Type:	Expression Plasmids
Product Name:	ZNF330 (NM_014487) Human Tagged ORF Clone
Tag:	Myc-DDK
Symbol:	ZNF330
Synonyms:	HSA6591; NOA36
Mammalian Cell Selection:	Neomycin
Vector:	pCMV6-Entry (PS100001)
E. coli Selection:	Kanamycin (25 ug/mL)
ORF Nucleotide Sequence:	>RC200336 ORF sequence Red=Cloning site Blue=ORF Green=Tags(s)

TTTTGTAATACGACTCACTATAGGGCGGCCGGAATTCGTCGACTGGATCCGGTACCGAGGAGATCTGCC
GCC**CGATCGCC**

ATGCCTAAAAAAGACTGGTGCAGGAAGAAGGCTGAGAACC GCCGAGAACGTGAAAACAACTAAGAG
CATCAAGAAGCACTATAGATTTAGCTAAACATCCATGTAATGCCTCAATGGAATGTGACAAGTGTGACAG
GCGGCAGAAGAATAGAGCATTGCTACTTTGTAATTCTGTACAGAAGTTACCAATTTGTCACAGTGT
GGGAAAACAAAGTGCATGATGAAGTCTCAGACTGTGTCATAAAGCATGCTGGTGTATACAGTACTGGCC
TTGCAATGGTGGTGCAATATGTGACTTCTGTGAAGCTTGGGTTGCCATGGTAGGAAATGTCTCAGTAC
ACATGCTTGTGCCTGCCCTCTACCGATGCTGAGTGTGTTGAATGTGAACGAGGCGTGTGGGACCATGGA
GGCAGAATATTCAGTTGTTCTTTTTGCCATAACTTCTCTGTGAAGATGATCAATTTGAGCATCAAGCCA
GCTGCCAGTTTTAGAGGCAGAAACATTTAAATGTGTTTCATGCAATCGGCTTGGTCAGCACTCATGTCT
CCGTTGTAAGGCTTGTCTGTGATGATCATAAAGGAGCAAAGTGTAAAGCAAGAAAAAGGAAAAACAG
CCTCCTTGTCTAAATGTGGCATGAACTCAGGAGACTAAGGACCTTAGCATGTCAACACGCTCCCTGA
AATTTGGCAGGCAGACTGGAGGTGAAGAGGGAGATGGAGCTTCTGGGTATGATGCTTATTGGAAGAACCT
TTCATCTGATAAGTATGGTGTATACCAGTACCACGATGAGGAGGAGGATGAGTATGAAGCAGAGGATGAT
GAAGAGGAAGAAGATGAAGGCAGAAAGGATTCAGATACTGAGTCATCAGATTTGTTACTAATTTGAATT
TAGGAAGGACCTATGCTAGTGGCTATGCTCACTATGAGGAACAAGAGAAC

ACGCGTACGCGGCCGCTCGAGCAGAAACTCATCTCAGAAGAGGATCTGGCAGCAATGATATCCTGGATT
ACAAGGATGACGACGATAAGGTTTAA



[View online »](#)

Protein Sequence: >RC200336 protein sequence
Red=Cloning site Green=Tags(s)

MPKKKTGARKKAENRREREKQLRASRSTIDLAKHPCNASMECDKCQRRQKNRAFICYFCNSVQKLPICAQC
 GKTKCMMKSSDCVIKHAGVYSTGLAMVGAICDFCEAWVCHGRKCLSTHACACPLTDAECVECERGVDHG
 GRIFSCSFCHNFLCEDDQFEHQASCQVLEAETFKCVCNRLGQHSCLRCKACFCDDHTRSKVFKQEKGKQ
 PPCPKCGHETQETKDLMSSTRSLKFGRTGGEEGDGASGYDAYWKNLSSDKYGDTSYHDEEEDYEAEEDD
 EEEEEDEGRKSDTESSDLFTNLNLGRTYASGYAHYEEQEN

TRTRPLEQKLISEEDLAANDILDYKDDDDKV

Chromatograms: https://cdn.origene.com/chromatograms/mk6388_d04.zip

Restriction Sites: SgfI-MluI

Cloning Scheme:



ACCN: NM_014487

ORF Size: 960 bp

OTI Disclaimer: The molecular sequence of this clone aligns with the gene accession number as a point of reference only. However, individual transcript sequences of the same gene can differ through naturally occurring variations (e.g. polymorphisms), each with its own valid existence. This clone is substantially in agreement with the reference, but a complete review of all prevailing variants is recommended prior to use. [More info](#)

OTI Annotation: This clone was engineered to express the complete ORF with an expression tag. Expression varies depending on the nature of the gene.

Components: The ORF clone is ion-exchange column purified and shipped in a 2D barcoded Matrix tube containing 10ug of transfection-ready, dried plasmid DNA (reconstitute with 100 ul of water).

Reconstitution Method:

1. Centrifuge at 5,000xg for 5min.
2. Carefully open the tube and add 100ul of sterile water to dissolve the DNA.
3. Close the tube and incubate for 10 minutes at room temperature.
4. Briefly vortex the tube and then do a quick spin (less than 5000xg) to concentrate the liquid at the bottom.
5. Store the suspended plasmid at -20°C. The DNA is stable for at least one year from date of shipping when stored at -20°C.

Note: Plasmids are not sterile. For experiments where strict sterility is required, filtration with 0.22um filter is required.

RefSeq: [NM_014487.6](#)

RefSeq Size: 1914 bp

RefSeq ORF: 963 bp

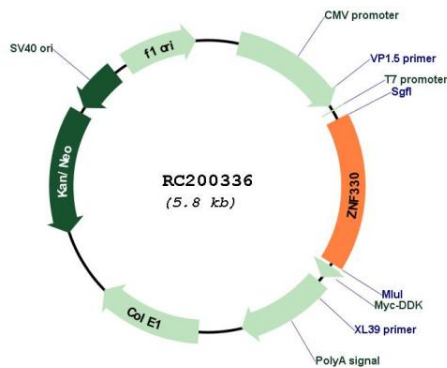
Locus ID: 27309

UniProt ID: [Q9Y3S2](#)

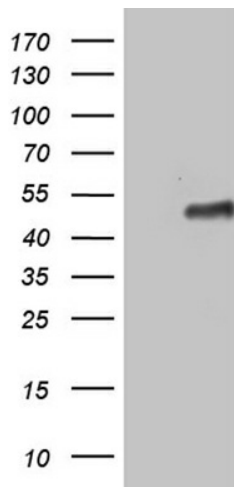
Cytogenetics: 4q31.21

MW: 36.2 kDa

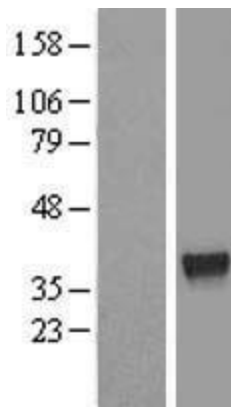
Product images:



Circular map for RC200336



HEK293T cells were transfected with the pCMV6-ENTRY control (Cat# [PS100001], Left lane) or pCMV6-ENTRY ZNF330 (Cat# RC200336, Right lane) cDNA for 48 hrs and lysed. Equivalent amounts of cell lysates (5 ug per lane) were separated by SDS-PAGE and immunoblotted with anti-ZNF330 (Cat# [TA810145])(1:2000). Positive lysates [LY415245] (100ug) and [LC415245] (20ug) can be purchased separately from OriGene.



Western blot validation of overexpression lysate (Cat# [LY415245]) using anti-DDK antibody (Cat# [TA50011-100]). Left: Cell lysates from untransfected HEK293T cells; Right: Cell lysates from HEK293T cells transfected with RC200336 using transfection reagent MegaTran 2.0 (Cat# [TT210002]).