

Product datasheet for RC200331L1

CALM3 (NM_005184) Human Tagged Lenti ORF Clone

Product data:

Product Type:	Expression Plasmids
Product Name:	CALM3 (NM_005184) Human Tagged Lenti ORF Clone
Tag:	Myc-DDK
Symbol:	CALM3
Synonyms:	CALM; CaM; CAM1; CAM2; CAMB; CaMIII; CPVT6; HEL-S-72; LQT16; PHKD; PHKD3
Mammalian Cell Selection:	None
Vector:	pLenti-C-Myc-DDK (PS100064)
E. coli Selection:	Chloramphenicol (34 ug/mL)
ORF Nucleotide Sequence:	The ORF insert of this clone is exactly the same as(RC200331).
Restriction Sites:	SgfI-MluI
Cloning Scheme:	

Cloning sites used for ORF Shuttling:



* The last codon before the Stop codon of the ORF.

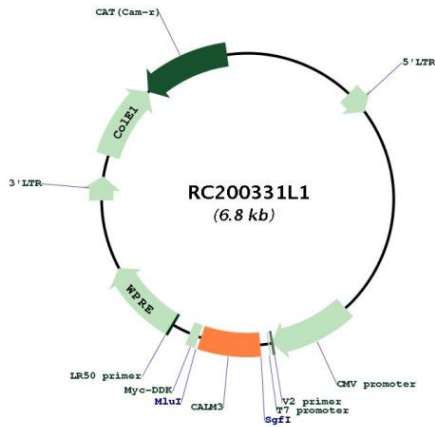
ACCN:	NM_005184
ORF Size:	447 bp



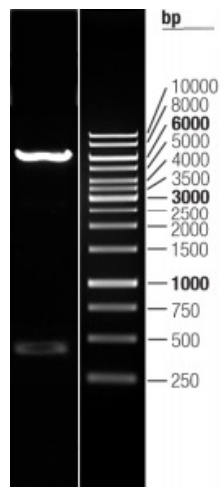
[View online »](#)

OTI Disclaimer:	The molecular sequence of this clone aligns with the gene accession number as a point of reference only. However, individual transcript sequences of the same gene can differ through naturally occurring variations (e.g. polymorphisms), each with its own valid existence. This clone is substantially in agreement with the reference, but a complete review of all prevailing variants is recommended prior to use. More info
OTI Annotation:	This clone was engineered to express the complete ORF with an expression tag. Expression varies depending on the nature of the gene.
Components:	The ORF clone is ion-exchange column purified and shipped in a 2D barcoded Matrix tube containing 10ug of transfection-ready, dried plasmid DNA (reconstitute with 100 ul of water).
Reconstitution Method:	<ol style="list-style-type: none">1. Centrifuge at 5,000xg for 5min.2. Carefully open the tube and add 100ul of sterile water to dissolve the DNA.3. Close the tube and incubate for 10 minutes at room temperature.4. Briefly vortex the tube and then do a quick spin (less than 5000xg) to concentrate the liquid at the bottom.5. Store the suspended plasmid at -20°C. The DNA is stable for at least one year from date of shipping when stored at -20°C.
RefSeq:	NM_005184.2
RefSeq Size:	2277 bp
RefSeq ORF:	450 bp
Locus ID:	808
UniProt ID:	P62158
Cytogenetics:	19q13.32
Domains:	EFh
Protein Families:	Druggable Genome
Protein Pathways:	Alzheimer's disease, Calcium signaling pathway, Glioma, GnRH signaling pathway, Insulin signaling pathway, Long-term potentiation, Melanogenesis, Neurotrophin signaling pathway, Olfactory transduction, Oocyte meiosis, Phosphatidylinositol signaling system, Vascular smooth muscle contraction
MW:	16.8 kDa
Gene Summary:	This gene encodes a member of a family of proteins that binds calcium and functions as a enzymatic co-factor. Activity of this protein is important in the regulation of the cell cycle and cytokinesis. Multiple alternatively spliced transcript variants have been observed at this gene. [provided by RefSeq, Aug 2016]

Product images:



Circular map for RC200331L1



Double digestion of RC200331L1 using SgfI and MluI