

## Product datasheet for **RC200331**

### CALM3 (NM\_005184) Human Tagged ORF Clone

#### Product data:

**Product Type:** Expression Plasmids  
**Product Name:** CALM3 (NM\_005184) Human Tagged ORF Clone  
**Tag:** Myc-DDK  
**Symbol:** CALM3  
**Synonyms:** CALM; CaM; CAM1; CAM2; CAMB; CaMIII; CPVT6; HEL-S-72; LQT16; PHKD; PHKD3  
**Mammalian Cell Selection:** Neomycin  
**Vector:** pCMV6-Entry (PS100001)  
**E. coli Selection:** Kanamycin (25 ug/mL)  
**ORF Nucleotide Sequence:** >RC200331 ORF sequence  
 Red=Cloning site Blue=ORF Green=Tags(s)

TTTTGTAATACGACTCACTATAGGGCGGCCGGAATTCGTCGACTGGATCCGGTACCGAGGAGATCTGCC  
 GCC**CGATCGCC**

ATGGCTGACCAGCTGACTGAGGAGCAGATTGCAGAGTTCAAGGAGGCCTTCTCCCTCTTTGACAAGGATG  
 GAGATGGCACTATCACCACCAAGGAGTTGGGGACAGTGATGAGATCCCTGGGACAGAACCCCACTGAAGC  
 AGAGCTGCAGGATATGATCAATGAGGTGGATGCAGATGGGAACGGGACCATTGACTTCCCGGAGTTCCTG  
 ACCATGATGGCCAGAAAGATGAAGGACACAGACAGTGAGGAGGAGATCCGAGAGGCGTTCGGTGTCTTTG  
 ACAAGGATGGGAATGGCTACATCAGCGCCGAGAGCTGCGTCACGTAATGACGAACCTGGGGGAGAAGCT  
 GACCGATGAGGAGGTGGATGAGATGATCAGGGAGGCTGACATCGATGGAGATGGCCAGGTC AATTATGAA  
 GAGTTTGTACAGATGATGACTGCAAAG

**ACGCGT**ACGCGGCCGCTCGAGCAGAACTCATCTCAGAAGAGGATCTGGCAGCAAATGATATCCTGGATT  
 ACAAGGATGACGACGATAAGGTTTAA

**Protein Sequence:** >RC200331 protein sequence  
 Red=Cloning site Green=Tags(s)  
 MADQLTEEQIAEFKEAFSLFDKGDGTITTKELGTVMRSLGQNPTEAELQDMINEVDADNGNTIDFPEFL  
 TMMARKMKDTSDEEIEAIFRVFDKDGNGYISAAELRHVMTNLGEKLTDEEVDEMIREADIDGDGQVNYE  
 EFVQMMTAK

**TRTRPLEQKLI**SEEDLAANDILDYKDDDDKV

**Chromatograms:** [https://cdn.origene.com/chromatograms/mk6080\\_a08.zip](https://cdn.origene.com/chromatograms/mk6080_a08.zip)



[View online »](#)

Restriction Sites: Sgfl-MluI

Cloning Scheme:



ACCN: NM\_005184

ORF Size: 447 bp

OTI Disclaimer: The molecular sequence of this clone aligns with the gene accession number as a point of reference only. However, individual transcript sequences of the same gene can differ through naturally occurring variations (e.g. polymorphisms), each with its own valid existence. This clone is substantially in agreement with the reference, but a complete review of all prevailing variants is recommended prior to use. [More info](#)

OTI Annotation: This clone was engineered to express the complete ORF with an expression tag. Expression varies depending on the nature of the gene.

Components: The ORF clone is ion-exchange column purified and shipped in a 2D barcoded Matrix tube containing 10ug of transfection-ready, dried plasmid DNA (reconstitute with 100 ul of water).

Reconstitution Method:

1. Centrifuge at 5,000xg for 5min.
2. Carefully open the tube and add 100ul of sterile water to dissolve the DNA.
3. Close the tube and incubate for 10 minutes at room temperature.
4. Briefly vortex the tube and then do a quick spin (less than 5000xg) to concentrate the liquid at the bottom.
5. Store the suspended plasmid at -20°C. The DNA is stable for at least one year from date of shipping when stored at -20°C.

Note: Plasmids are not sterile. For experiments where strict sterility is required, filtration with 0.22um filter is required.

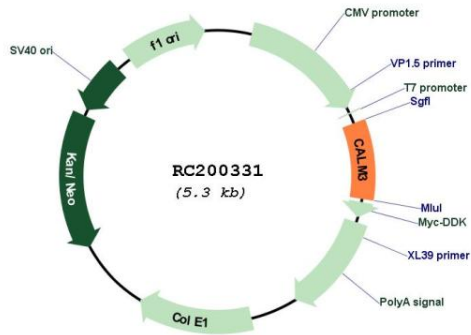
RefSeq: [NM\\_005184.4](#)

RefSeq Size: 2277 bp

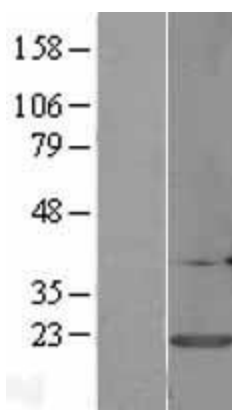
RefSeq ORF: 450 bp

**Locus ID:** 808  
**UniProt ID:** [P62158](#)  
**Cytogenetics:** 19q13.32  
**Domains:** EFh  
**Protein Families:** Druggable Genome  
**Protein Pathways:** Alzheimer's disease, Calcium signaling pathway, Glioma, GnRH signaling pathway, Insulin signaling pathway, Long-term potentiation, Melanogenesis, Neurotrophin signaling pathway, Olfactory transduction, Oocyte meiosis, Phosphatidylinositol signaling system, Vascular smooth muscle contraction  
**MW:** 16.8 kDa  
**Gene Summary:** This gene encodes a member of a family of proteins that binds calcium and functions as a enzymatic co-factor. Activity of this protein is important in the regulation of the cell cycle and cytokinesis. Multiple alternatively spliced transcript variants have been observed at this gene. [provided by RefSeq, Aug 2016]

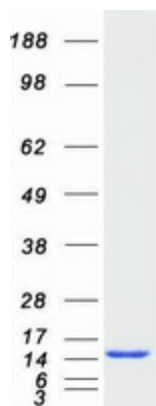
**Product images:**



Circular map for RC200331



Western blot validation of overexpression lysate (Cat# [LY401586]) using anti-DDK antibody (Cat# [TA50011-100]). Left: Cell lysates from untransfected HEK293T cells; Right: Cell lysates from HEK293T cells transfected with RC200331 using transfection reagent MegaTran 2.0 (Cat# [TT210002]).



Coomassie blue staining of purified CALM3 protein (Cat# [TP300331]). The protein was produced from HEK293T cells transfected with CALM3 cDNA clone (Cat# RC200331) using MegaTran 2.0 (Cat# [TT210002]).