

## Product datasheet for **RC200330**

### **GRB7 (NM\_001030002) Human Tagged ORF Clone**

#### **Product data:**

Product Type:	Expression Plasmids
Product Name:	GRB7 (NM_001030002) Human Tagged ORF Clone
Tag:	Myc-DDK
Symbol:	GRB7
Mammalian Cell Selection:	Neomycin
Vector:	pCMV6-Entry (PS100001)
E. coli Selection:	Kanamycin (25 ug/mL)



[View online »](#)

**ORF Nucleotide Sequence:**

>RC200330 ORF sequence  
 Red=Cloning site Blue=ORF Green=Tags(s)

TTTTGTAATACGACTCACTATAGGGCGGCCGGAATTCGTCGACTGGATCCGGTACCGAGGAGATCTGCC  
 GCC**GCGATCGCC**

ATGGAGCTGGATCTGTCTCCACCTCATCTTAGCAGCTCTCGGAAGACCTTTGCCAGCCCTGGGACCC  
 CTCTGGACTCCCCGGCCCCCTGATACCCTCTGCCTGAGGAGGTAAAGAGGTCCAGCCTCTCTCAT  
 CCCAACACCAGGAGAACTTCGAGAGGAGGAGGCGTCCACCTCCCTCCCTCTATCCCCAACCCC  
 TTCCCTGAGCTCTGCAGTCTCCCTCACAGAGCCCAATTCGGGGGCCCTCCAGTGCAAGGGGCTGC  
 TCCCCCGGATGCCAGCCGCCCATGTAGTAAAGGTGTACAGTGGAGTGGGCCTGCAGTCTGTGGA  
 GGTGGCAGCAGGTGCCACAGCTCGCCACGTGTGTGAAATGCTGGTGCAGCGAGCTCACGCCTTGAGCGAC  
 GAGACCTGGGGGCTGGTGGAGTCCACCCACCTAGCACTGGAGCGGGTTGGAGGACCAGGATCCG  
 TGGTGAAGTGCAGGCTGCCTGGCCGTGGCGGAGATAGCCGTTCTGTTCCGGAAAACTTCGCCAA  
 GTACGAACTGTTCAAGAGCTCCCAACATCCCTGTTCCAGAAAAATGGTCTCCAGCTGTCTCGATGCA  
 CACACTGGTATATCCCATGAAGACCTCATCCAGAATTCCTGAATGCTGGCAGCTTCTCTGAGATCCAGG  
 GCTTTCTGCAGCTGCGGGGTTCCAGGACGGAAGCTTTGAAACGCTTTTCTGCTTCTTGCGCCGATCTGG  
 CCTCTATTACTCCACCAAGGGCACCTCTAAGGATCCGAGGCACCTGCAGTACGTGGCAGATGTGAACGAG  
 TCCAACGTGTACGTGGTACGCAGGCGCCAAAGCTCTACGGGATGCCACTGACTTCGGTTTCTGTGTCA  
 AGCCCAACAAGCTTCGAAATGGCCACAAGGGGCTTCGGATCTTCTGCAGTGAAGATGAGCAGAGCCGCAC  
 CTGCTGGCTGGCTGCCTTCCGCCTTCAAGTACGGGGTGCAGCTGTACAAGAATTACCAGCAGGCACAG  
 TCTCGCCATCTGCATCCATCTTGTGGCTCCCACCTTGAGAAGTGCCTCAGATAATACCCTGGTGG  
 CCATGGACTTCTCTGGCCATGCTGGCGTGTCAATTGAGAACCCTCCGGGAGGCTCTGAGTGTGGCCCTGGA  
 GGAGGCCAGGCCTGGAGGAAGAAGACAAACCACCGCCTCAGCCTGCCATGCCAGCCTCCGGCACGAGC  
 CTAGTGCAGCCATCCACCGCACCAACTCTGGTTCACGGGCGCATTTCCCGTGAAGGAGCCAGCGGC  
 TTATTGGACAGCAGGCTTGGTAGACGGCTGTTCTGTTCCGGGAGAGTCAAGGAAACCCAGGGCTT  
 TGTCTCTCTTTGTGCCACCTGCAGAAAGTGAAGCATTATCTCATCTGCCGAGCGAGGAGGAGGCCGC  
 CTGTACTTCAGCATGGATGATGGCCAGACCCGCTTCACTGACCTGCTGCAGCTCGTGGAGTTCACCAGC  
 TGAACCGGGCATCTGCCGTGCTGTCGCCATTGCTGCACGGGTGGCCCT

**ACGCGT**ACGCGGCCGCTCGAGCAGAACTCATCTCAGAAGAGGATCTGGCAGCAAATGATATCTGGATT  
 ACAAGGATGACGACGATAAGGTTTAA

**Protein Sequence:**

>RC200330 protein sequence  
 Red=Cloning site Green=Tags(s)

MELDLSPPHLSSSPEDLCPAPGTPPGTPRPPDTPLPEEVKRSQPLLIPPTGRKLREEERRATSLPSIPNP  
 FPELCSPPSQSPIILGGPSSARGLLPRDASRPVVKVYSEDGACRSVEVAAGATARHVCEMLVQRAHALSD  
 ETWGLVECHPHLALERGLEDHESVVEVQAAPVGGDSRFVFRKNFAKYELFKSSPHSLFPEKMOVSSCLDA  
 HTGISHEDLIQNFLNAGSFPEIQGFLQLRGSGRKLWKRFFCFLLRRSGLYYSTKGTSKDPRHLQYVADVNE  
 SNVYVVTQGRKLYGMPDFGFCVKNKLRNGHKLRFCSSEDEQSRTCWLAARLRFKYGVQLYKNYQQAQ  
 SRHLHPSCLGSPPLRSASDNTLVAMDFSGHAGRVNIENPREALSVALEEAQAWRKKTNHRLSLPMPASGTS  
 LSAAIHRQLWFHGRISREESQRLIGQQGLVDGLFLVRESQRNPQGFVLSLCHLQKVKHYLILPSEEEGR  
 LYFSMDDGQTRFTDLLQLVEFHQLNRGILPCLLRHCCTRAL

**TR**TRPLEQKLISEEDLAANDILDYKDDDDKV

**Chromatograms:**

[https://cdn.origene.com/chromatograms/mk6668\\_e10.zip](https://cdn.origene.com/chromatograms/mk6668_e10.zip)

**Restriction Sites:**

Sgfl-Mlul

**Cloning Scheme:**


**ACCN:** NM\_001030002

**ORF Size:** 1596 bp

**OTI Disclaimer:** The molecular sequence of this clone aligns with the gene accession number as a point of reference only. However, individual transcript sequences of the same gene can differ through naturally occurring variations (e.g. polymorphisms), each with its own valid existence. This clone is substantially in agreement with the reference, but a complete review of all prevailing variants is recommended prior to use. [More info](#)

**OTI Annotation:** This clone was engineered to express the complete ORF with an expression tag. Expression varies depending on the nature of the gene.

**Components:** The ORF clone is ion-exchange column purified and shipped in a 2D barcoded Matrix tube containing 10ug of transfection-ready, dried plasmid DNA (reconstitute with 100 ul of water).

- Reconstitution Method:**
1. Centrifuge at 5,000xg for 5min.
  2. Carefully open the tube and add 100ul of sterile water to dissolve the DNA.
  3. Close the tube and incubate for 10 minutes at room temperature.
  4. Briefly vortex the tube and then do a quick spin (less than 5000xg) to concentrate the liquid at the bottom.
  5. Store the suspended plasmid at -20°C. The DNA is stable for at least one year from date of shipping when stored at -20°C.

**Note:** Plasmids are not sterile. For experiments where strict sterility is required, filtration with 0.22um filter is required.

**RefSeq:** [NM\\_001030002.2](#)

**RefSeq Size:** 2130 bp

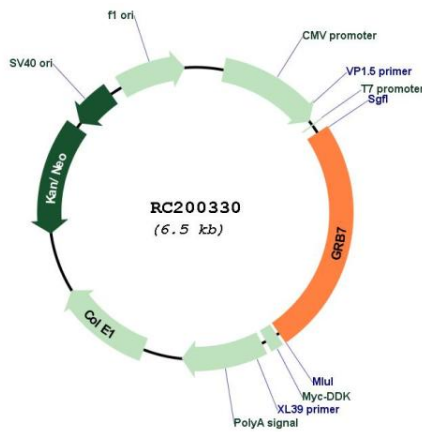
**RefSeq ORF:** 1599 bp

**Locus ID:** 2886

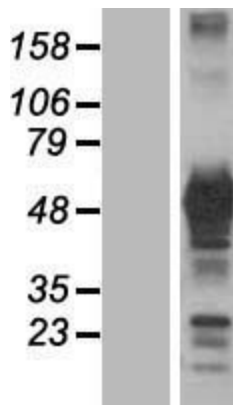
**UniProt ID:** [Q14451](#)  
**Cytogenetics:** 17q12  
**Protein Families:** Druggable Genome, Embryonic stem cells, Stem cell - Pluripotency  
**MW:** 59.7 kDa  
**Gene Summary:**

The product of this gene belongs to a small family of adapter proteins that are known to interact with a number of receptor tyrosine kinases and signaling molecules. This gene encodes a growth factor receptor-binding protein that interacts with epidermal growth factor receptor (EGFR) and ephrin receptors. The protein plays a role in the integrin signaling pathway and cell migration by binding with focal adhesion kinase (FAK). Several transcript variants encoding two different isoforms have been found for this gene. [provided by RefSeq, Jun 2011]

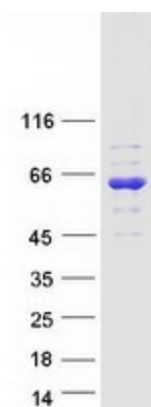
### Product images:



Circular map for RC200330



Western blot validation of overexpression lysate (Cat# [LY422282]) using anti-DDK antibody (Cat# [TA50011-100]). Left: Cell lysates from untransfected HEK293T cells; Right: Cell lysates from HEK293T cells transfected with RC200330 using transfection reagent MegaTran 2.0 (Cat# [TT210002]).



Coomassie blue staining of purified GRB7 protein (Cat# [TP300330]). The protein was produced from HEK293T cells transfected with GRB7 cDNA clone (Cat# RC200330) using MegaTran 2.0 (Cat# [TT210002]).