

Product datasheet for **RC200317**

DGCR6L (NM_033257) Human Tagged ORF Clone

Product data:

Product Type: Expression Plasmids
 Product Name: DGCR6L (NM_033257) Human Tagged ORF Clone
 Tag: Myc-DDK
 Symbol: DGCR6L
 Synonyms: DGCR6
 Mammalian Cell Selection: Neomycin
 Vector: pCMV6-Entry (PS100001)
 E. coli Selection: Kanamycin (25 ug/mL)
 ORF Nucleotide Sequence: >RC200317 ORF sequence
 Red=Cloning site Blue=ORF Green=Tags(s)

TTTTGTAATACGACTCACTATAGGGCGGCCGGAATTCGTCGACTGGATCCGGTACCGAGGAGATCTGCC
 GCC**CGATCGCC**

ATGGAGCGCTACGCGCCGCCTTGGAGGAGGTGGCGGACGGTGCCCGGCAGCAGGAGCGACACTACCACT
 TGCTGTCGGCGCTACAGAGCCTGGTGAAGGAGTTGCCAGCTCTTCCAGCAGCGCCTGTCTACACCAC
 GCTCAGCGACCTGGCCCTGGCGCTTCTCGACGGCACCGTGTTCGAAATCGTCAGGGGCTACTGGAGATC
 CAGCACCTCACCGAAAAGAGCCTGTACAACCAGCGCCTGCGCCTACAGAACGAGCACCGAGTGCTCAGGC
 AGGCGCTGCGGCAGAAGCACAGGAAGCCAGCAGGCCTGCCGGCCCCAACCTGCCTGTGGTTCAGGC
 GGCTCAGCAGCGAGAAGTACAGGCGGTGGAACACCGGATCCGTGAGGAGCAGCGGGCGATGGACCAGAAG
 ATCATCTGGAGCTGGACCGGAAGGTGGCTGACCAGCAGAGCACACTGGAGAAGGCGGGGTGGCTGGCT
 TCTACGTGACCACCAACCCACAGGAGCTGATGCTGCAGATGAACCTGCTGGAACCTCATCCGAAAGCTGCA
 GCAGAGGGGCTGCCGGGCAGGGAATGCAGCCCTGGGACTGGGAGGTCCCTGGCAGTGCCTGCTGCCAG
 TGTGACCAGAAAGGCAGCCCTGTCCCACCA

ACGCGTACGCGGGCCGCTCGAGCAGAAACTCATCTCAGAAGAGGATCTGGCAGCAAATGATATCCTGGATT
 ACAAGGATGACGACGATAAGGTTTAA



[View online »](#)

Protein Sequence: >RC200317 protein sequence
Red=Cloning site **Green=Tags(s)**

MERYAAALEEVADGARQQRHYQLLSALQSLVKELPSSFQQRLSYTTLSDLALALLDGTVFEIVQGLLEI
QHLTEKSLYNQRLRLQNEHRVLRQALRQKHQEAQQACRPHNLPVVQAAQQRLEAVEHRIREEQRAMDQK
IILELDRKVADQQSTLEKAGVAGFYVTTNPQELMLQMNLELIRKLQQRGCRAGNAALGLGGPWQSPAAQ
CDQKGSVPVP

TRTRPLEQKLISEEDLAANDILDYKDDDDKV

Chromatograms: https://cdn.origene.com/chromatograms/mk6399_f08.zip

Restriction Sites: SgfI-MluI

Cloning Scheme:

Cloning sites used for ORF Shuttling:



* The last codon before the Stop codon of the ORF

ACCN: NM_033257

ORF Size: 660 bp

OTI Disclaimer: The molecular sequence of this clone aligns with the gene accession number as a point of reference only. However, individual transcript sequences of the same gene can differ through naturally occurring variations (e.g. polymorphisms), each with its own valid existence. This clone is substantially in agreement with the reference, but a complete review of all prevailing variants is recommended prior to use. [More info](#)

OTI Annotation: This clone was engineered to express the complete ORF with an expression tag. Expression varies depending on the nature of the gene.

Components: The ORF clone is ion-exchange column purified and shipped in a 2D barcoded Matrix tube containing 10ug of transfection-ready, dried plasmid DNA (reconstitute with 100 ul of water).

Reconstitution Method:

1. Centrifuge at 5,000xg for 5min.
2. Carefully open the tube and add 100ul of sterile water to dissolve the DNA.
3. Close the tube and incubate for 10 minutes at room temperature.
4. Briefly vortex the tube and then do a quick spin (less than 5000xg) to concentrate the liquid at the bottom.
5. Store the suspended plasmid at -20°C. The DNA is stable for at least one year from date of shipping when stored at -20°C.

Note: Plasmids are not sterile. For experiments where strict sterility is required, filtration with 0.22um filter is required.

RefSeq: [NM_033257.4](#)

RefSeq Size: 1217 bp

RefSeq ORF: 663 bp

Locus ID: 85359

UniProt ID: [Q9BY27](#)

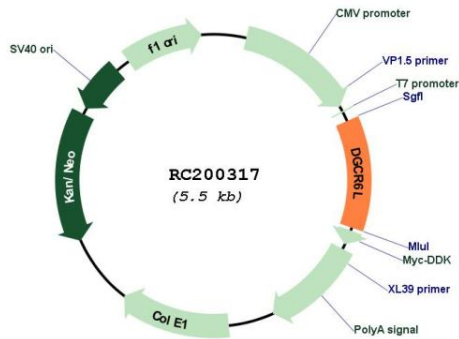
Cytogenetics: 22q11.21

Protein Families: Druggable Genome, Transcription Factors

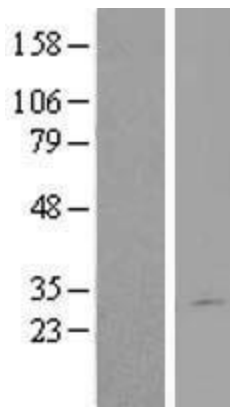
MW: 24.9 kDa

Gene Summary: This gene, the result of a duplication at this locus, is one of two functional genes encoding nearly identical proteins that have similar expression patterns. The product of this gene is a protein that shares homology with the Drosophila gonadal protein, expressed in gonadal tissues and germ cells, and with the human laminin gamma-1 chain that functions in cell attachment and migration. This gene is located in a region of chromosome 22 implicated in the DiGeorge syndrome, one facet of a broader collection of anomalies referred to as the CATCH 22 syndrome. [provided by RefSeq, Jul 2008]

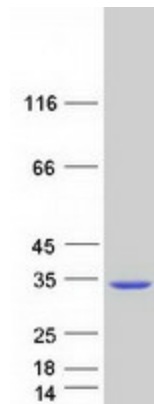
Product images:



Circular map for RC200317



Western blot validation of overexpression lysate (Cat# [LY409631]) using anti-DDK antibody (Cat# [TA50011-100]). Left: Cell lysates from untransfected HEK293T cells; Right: Cell lysates from HEK293T cells transfected with RC200317 using transfection reagent MegaTran 2.0 (Cat# [TT210002]).



Coomassie blue staining of purified DGCR6L protein (Cat# [TP300317]). The protein was produced from HEK293T cells transfected with DGCR6L cDNA clone (Cat# RC200317) using MegaTran 2.0 (Cat# [TT210002]).