

## Product datasheet for **RC200316**

### **CERT1 (NM\_031361) Human Tagged ORF Clone**

#### **Product data:**

Product Type:	Expression Plasmids
Product Name:	CERT1 (NM_031361) Human Tagged ORF Clone
Tag:	Myc-DDK
Symbol:	CERT1
Synonyms:	CERT; CERTL; COL4A3BP; GPBP; MRD34; STARD11
Mammalian Cell Selection:	Neomycin
Vector:	pCMV6-Entry (PS100001)
E. coli Selection:	Kanamycin (25 ug/mL)



[View online »](#)

**ORF Nucleotide Sequence:**

>RC200316 representing NM\_031361  
 Red=Cloning site Blue=ORF Green=Tags(s)

TTTTGTAATACGACTCACTATAGGGCGGCCGGAATTCGTCGACTGGATCCGGTACCGAGGAGATCTGCC  
 GCC**CGGATCGCC**

ATGTCGGATAATCAGAGCTGGAACCTCGTCGGGCTCGGAGGAGGATCCAGAGACGGAGTCTGGGCCGCTG  
 TGGAGCGCTGCGGGTCCCTCAGTAAGTGGACAACTACATTCATGGGTGGCAGGATCGTTGGGTAGTTTT  
 GAAAAAATAGTCTGAGTTACTACAAATCTGAAGATGAAACAGAGTATGGCTGCAGAGGATCCATCTGT  
 CTTAGCAAGGCTGTCATCACACCTCACGATTTTGTGAATGTCGATTTGATATTAGTGTAAATGATAGTG  
 TTTGGTATCTTCGTGCTCAGGATCCAGATCATAGACAGCAATGGATAGATGCCATTGAACAGCACAAAGC  
 TGAATCTGGATATGGATCTGAATCCAGCTTGCCTGCACATGGCTCAATGGTGTCCCTGGTGTCTGGAGCA  
 AGTGGCTACTCTGCAACATCCACCTCTTCAATCAAGAAAGGCCACAGTTTACGTGAGAAGTTGGCTGAAA  
 TGGAAACATTTAGAGACATCTTATGTAGACAAGTTGACACGCTACAGAAGTACTTTGATGCCTGTGCTGA  
 TGCTGTCTCTAAGGATGAACTTCAAAGGATAAAGTGGTGAAGATGATGAAGATGACTTTCCTACAACG  
 CGTTCTGATGGTACTTCTTGCATAGTACCAACGGCAATAAAGAAAAGTTATTTCCACATGTGACACCAA  
 AAGGAATTAATGGTATAGACTTTAAAGGGGAAGCGATAACTTTTTAAAGCAACTACTGCTGGAATCCTTGC  
 AACACTTTCTCATTGTATTGAACTAATGGTTAAACGTGAGGACAGCTGGCAGAAGAGACTGGATAAGGAA  
 ACTGAGAAGAAAAGAAGAAGCAGAGGAAGCATATAAAAAATGCAATGACAGAAGTAAAGAAAAATCCCACT  
 TTGGAGGACCAGATTATGAAGAAGGCCCTAACAGTCTGATTAATGAAGAAGAGTTCTTTGATGCTGTTGA  
 AGCTGCTCTTGACAGACAAGATAAAAATAGAAGAAGTACAGAGTGAAGGAGGAGATTACATTGGCCT  
 ACATCCTTGCCCTCTGGAGATGCCTTTTCTTCTGTGGGACACATAGATTTGTCCAAAAGGTTGAAGAGA  
 TGGTGCAGAACCACATGACTTACTCATTACAGGATGTAGGCGGAGATGCCAATTGGCAGTTGGTGTGAGA  
 AGAAGGAGAAAATGAAGGTATACAGAAGAGAAGTGAAGAAGAAAATGGGATTGTTCTGGATCCTTTAAAAGCT  
 ACCCATGCAGTTAAAGGCGTCACAGGACATGAAGTCTGCAATTTTTCTGGAATGTTGACGTTCCGAATG  
 ACTGGGAAAACACTATAGAAAACCTTTCATGTGGTGGAAACATTAGCTGATAATGCAATCATCATTATCA  
 AACACACAAGAGGGTGTGGCCTGCTTCTCAGCGAGACGATTATATCTTTCTGTCATTGAAAGATACCA  
 GCCTTGACTGAAAATGACCCTGAACTTGGATAGTTTGAATTTTTCTGTGGATCATGACAGTGTCTCCTC  
 TAAACAACCGATGTGTCCTGCCAAAATAAATGTTGCTATGATTTGTCAAACCTGGTAAGCCCACCAGA  
 GGGAAACCAGGAAATTAGCAGGGACAACATTCTATGCAAGATTACATATGTAGCTAATGTGAACCTGGA  
 GGATGGGCACCAGCCTCAGTGTTAAGGGCAGTGGCAAAGCGAGAGTATCCTAAATTTCTAAAACGTTTTA  
 CTTCTTACGTCCAAGAAAAAAGTGCAGGAAAGCCTATTTTGTTT

AG**CGGACCG**ACGCGTACGCGGCCGCTCGAGCAGAAAACCTCATCTCAGAAGAGGATCTGGCAGCAAATGATATCC  
 TGGATTACAAGGATGACGACGATAAGGTTTAA

**Protein Sequence:**

>RC200316 representing NM\_031361  
 Red=Cloning site Green=Tags(s)

MSDNQSWNSSGSEEDPETESGPPVERCGVL SKWTNYIHGWQDRWVVLKNNALSYKSEDETEYGCGRSIC  
 LSKAVITPHDFDECRFDISVNDVWYLRQDPDRQQWIDAEQHKTESGYGSESSLRRHGMVSLVSGA  
 SGYSATSTSSFKKGHSREKLAEMETFRDILCRQVDTLQKYFDACADAVSKDELQRDKVVEDDEDDFPTT  
 RSDGDFLHSTNGNKEKLFPHVTPKINGIDFKGEAITFKATTAGILATLSHCIELMVKREDSWQKRLDKE  
 TEKKRRTEEAYKNAMTELKKKSHFGGPDYEEGPNLSINEEFFDAVEAALDRQDKIEEQSQSEKVRHLHP  
 TSLPSGDAFSSVGTTHRFVQKVEEMVQNHMTYSLQDVGGDANWQLVVEEGEMKVYRREVEENGIVLDPLKA  
 THAVKGVGTGHEVCNYFWNVDRNDWETTIEFNHVVETLADNAIIYQTHKRWPASQRDVLVLSVIRKIP  
 ALTENDPETWIVCNFSVDHDSAPLNNRCVRAKINVAMICQTLVSPPEGNQEISRDNILCKITYVANVNP  
 GWAPASVLRVAKREYKFLKRFYSYVQEKTAGKPILF

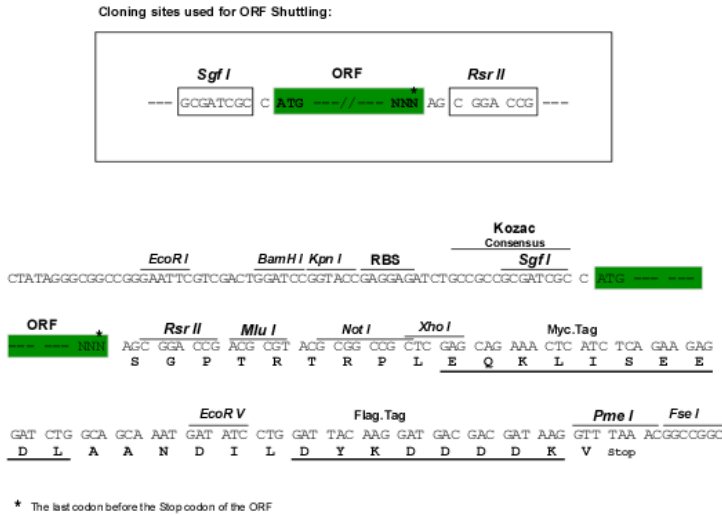
SGP**TRRRLEQKLI**SEEDLAANDILDYKDDDDKV

**Chromatograms:**

[https://cdn.origene.com/chromatograms/mg2652\\_c05.zip](https://cdn.origene.com/chromatograms/mg2652_c05.zip)

Restriction Sites: SgfI-RsrII

Cloning Scheme:



ACCN: NM\_031361

ORF Size: 1794 bp

OTI Disclaimer: The molecular sequence of this clone aligns with the gene accession number as a point of reference only. However, individual transcript sequences of the same gene can differ through naturally occurring variations (e.g. polymorphisms), each with its own valid existence. This clone is substantially in agreement with the reference, but a complete review of all prevailing variants is recommended prior to use. [More info](#)

OTI Annotation: This clone was engineered to express the complete ORF with an expression tag. Expression varies depending on the nature of the gene.

Components: The ORF clone is ion-exchange column purified and shipped in a 2D barcoded Matrix tube containing 10ug of transfection-ready, dried plasmid DNA (reconstitute with 100 ul of water).

Reconstitution Method:

1. Centrifuge at 5,000xg for 5min.
2. Carefully open the tube and add 100ul of sterile water to dissolve the DNA.
3. Close the tube and incubate for 10 minutes at room temperature.
4. Briefly vortex the tube and then do a quick spin (less than 5000xg) to concentrate the liquid at the bottom.
5. Store the suspended plasmid at -20°C. The DNA is stable for at least one year from date of shipping when stored at -20°C.

Note: Plasmids are not sterile. For experiments where strict sterility is required, filtration with 0.22um filter is required.

RefSeq: [NM\\_031361.3](#)

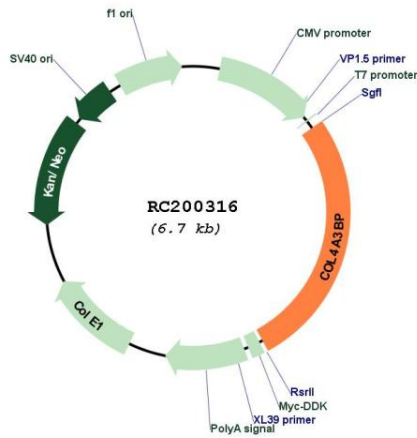
RefSeq Size: 2311 bp

RefSeq ORF: 1797 bp

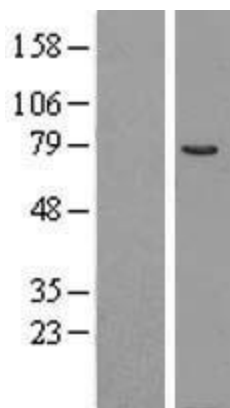
**Locus ID:** 10087  
**UniProt ID:** [Q9Y5P4](#)  
**Cytogenetics:** 5q13.3  
**Domains:** PH, START  
**MW:** 67.8 kDa

**Gene Summary:** This gene encodes a kinase that specifically phosphorylates the N-terminal region of the non-collagenous domain of the alpha 3 chain of type IV collagen, known as the Goodpasture antigen. Goodpasture disease is the result of an autoimmune response directed at this antigen. One isoform of this protein is also involved in ceramide intracellular transport. Three transcript variants encoding different isoforms have been found for this gene. [provided by RefSeq, Jul 2008]

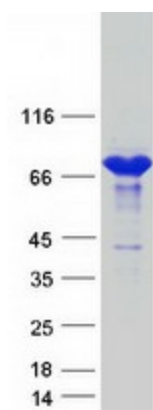
### Product images:



Circular map for RC200316



Western blot validation of overexpression lysate (Cat# [LY403108]) using anti-DDK antibody (Cat# [TA50011-100]). Left: Cell lysates from untransfected HEK293T cells; Right: Cell lysates from HEK293T cells transfected with RC200316 using transfection reagent MegaTran 2.0 (Cat# [TT210002]).



Coomassie blue staining of purified CERT1 protein (Cat# [TP300316]). The protein was produced from HEK293T cells transfected with CERT1 cDNA clone (Cat# RC200316) using MegaTran 2.0 (Cat# [TT210002]).