

Product datasheet for **RC200303**

WDR1 (NM_017491) Human Tagged ORF Clone

Product data:

Product Type:	Expression Plasmids
Product Name:	WDR1 (NM_017491) Human Tagged ORF Clone
Tag:	Myc-DDK
Symbol:	WDR1
Synonyms:	AIP1; HEL-S-52; NORI-1; PFITS
Mammalian Cell Selection:	Neomycin
Vector:	pCMV6-Entry (PS100001)
E. coli Selection:	Kanamycin (25 ug/mL)



[View online »](#)

ORF Nucleotide Sequence:

>RC200303 ORF sequence
 Red=Cloning site Blue=ORF Green=Tags(s)

TTTTGTAATACGACTCACTATAGGGCGGCCGGGAATTCGTCGACTGGATCCGGTACCGAGGAGATCTGCC
 GCC**GCGATCGCC**

ATGCCGTACGAGATCAAGAAGGTGTTCCGCAGCCTCCCGCAGGTGGAGAGGGGCTCTCCAAGATCATCG
 GCGGCGACCCTAAGGGCAACAATTTTCTGTACACCAATGGAAAGTGCATCCTAAGGAACATCGACAA
 CCCAGCCCTTGCTGACATCTACACAGAGCAGCCCATCAGGTGGTGGTGGCCAAGTATGCGCCACGCGGA
 TTCTACATTGCCTCCGGAGATGTGTCTGGGAAGCTGAGGATCTGGGATACCACGCAGAAGGAGCACCTGT
 TGAAGTATGAGTACCAGCCTTTTCGCTGGGAAGATCAAAGACATTGCTTGGACTGAAGACAGTAAGAGGAT
 CGCCGTGGTCCGGGAAGGAAGGGAGAAGTTGGAGCAGTCTTCTCTGGGATAGTGGCTCTTCTGTGGGC
 GAGATTACAGGACACAACAAGTCATCAACAGCGTGGACATCAAGCAGAGCCGCCATACCGGCTGGCCA
 CGGAAGCGATGATAAATGCGCGCATTCTTTGAGGGACCCCATCAAGTTCAGTTCACAATTGGCGA
 CCACAGCCGCTTTGTCAACTGTGTGCGATTCTCTCTGATGGGAACAGATTTGCCACAGCCAGTGTCTGAC
 GCCAGATATACATCTATGACGGGAAGACTGGGGAAGGTGTGCGCGCTGGGCGGAAGCAAGGCCACG
 ACGGTGGGATTTACGCAATTAGTTGGAGTCCCACAGCACCCATTTGCTTTCTGCTTCTGGGGACAAAAC
 TTCCAAGATTTGGGACGTGAGCGTGAATCCGTGGTCCAGCACATTTCCCATGGGCTCCACGGTCTGGAC
 CAGCAGCTGGGCTGCCTATGGCAGAAGGACCACCTGCTCAGTGTCTCCCTGTCCGGGTACATCAACTATC
 TGGACAGAAAACACCCAGCAAGCCCTGCACGTATCAAGGGTACAGTAAATCGATCCAGTGTCTGAC
 GGTGCATAAAAACGGCGGCAAGTCTACATTTACTCTGGGAGCCACGACGGACACATTAATTACTGGGAT
 TCAGAGACGGGGAGAAGCAGTCTTCTGCTGGGAAAGGCCACACGAACCAGGTGCCAGGATGACCGTGG
 ATGAGTCCGGGACGCTCATCAGTGCAGCATGGACGACACCGTGGGATACACAGCCTCATGCTCGGGGA
 CTACAGCGGACAAGGAGTTGTGAAACTGGACGTTTCAGCCAAAGTGCCTAGCCGTCGGCCCGGGGGATAC
 GCCGTGGTGTGTCATTGGACAGATTGCTCTGCTGAAGGATCAGAGGAAGTGTTCAGCATCGACAACC
 CCGGCTACGAGCCGAAGTTGTGGCAGTGCACCCCGCGGGGACACGGTGGCAATTGGGGGTGTGGACGG
 CAACGTCCGCCTGTATTCCATCTGGGCACCACGTTGAAGGATGAGGGCAAGCTCCTAGAGGCCAAGGGC
 CCCGTGACCGACGTGGCCTACTCCACGACGGCGCCTTCTCGCGGTGTGCGACGCCAGCAAGGTGGTCA
 CAGTGTTCAGCGTTGCTGACGGCTACTCGGAGAACAATGTTTTTATGGACACCATGCAAAAATCGTCTG
 CCTGGCCTGGTCCCAGACAATGAACACTTTGCCTCCGGTGGCATGGACATGATGGTGTATGTTTGGACC
 CTGAGTGACCCGAAACCAGAGTCAAGATCCAAGATGCACACCGGCTGCACCATGTCAGCAGCCTGGCCT
 GGCTGGACGAGCACAGCTGGTACGACCTCCCATGATGCCTCTGTCAAGGAGTGGACAATCACCTAC

ACGCGTACGCGGCCGCTCGAGCAGAAACTCATCTCAGAAGAGGATCTGGCAGCAAATGATATCCTGGATT
 ACAAGGATGACGACGATAAGGTTTAA

Protein Sequence:

>RC200303 protein sequence
 Red=Cloning site Green=Tags(s)

MPYEIKKVFASLPQVERGVSKIIGGDPKGNFLYNGKCVILRNIDNPALADIYTEHAHQVVVAKYAPSG
 FYIASGDVSGKLRWDTTQKEHLLKYEYQPFAGKIKDIAWTEDESKRIAVVGEKREKFGAVFLWDSGSSVG
 EITGHNKVINSDIKQSRPYRLATGSDDNCAAFFEGPPFKFKFTIGDHSRNVNCRVSPDGNRFATASAD
 GQIYIYDGKTGEKVCALGGSKAHDGGIYAISSPDSTHLLSASGDKTSKIWDVSVNSVSTFPMGSTVLD
 QQLGCLWQKDHLLSVSLSGYINYLDRNNSKPLHVIKGHKSISIQCLTVHKNGGKSYIYSGSHDGHINYWD
 SETGENDSFAGKHTNQVSRMTVDESGQLISCSMDDTVRYTSLMLRDYSGQGVVLDVQPKCVAVGPPGY
 AVVVCIGQIVLLKDQRKCFSIDNPGYEPEVVAVHPGGDTVAIGGVDGNVRLYSILGTTLKDEGLLEAKG
 PVTDVAYSHDGAFLAVCDASKVVTVFVADGYSENNVYGHAKIVCLAWSPDNEHFASGMDMMVYVWT
 LSDPETRVKIQDAHRLHHVSSLAWLDEHTLVTTSHDASVKEWTITY

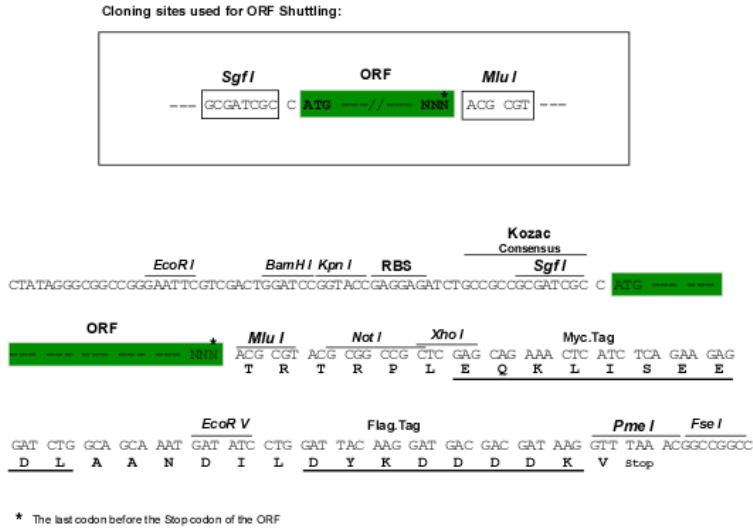
TRTRPLEQKLISEEDLAANDILDYKDDDDKV

Chromatograms:

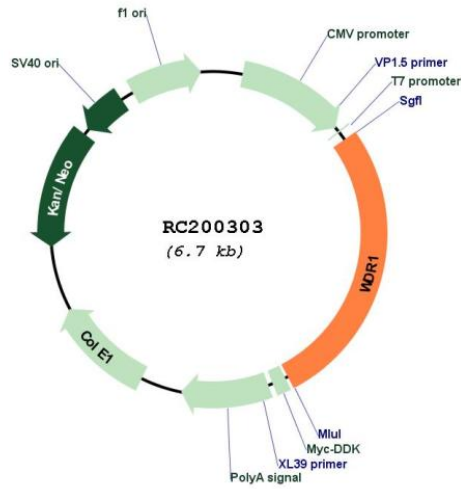
https://cdn.origene.com/chromatograms/mk6199_c10.zip

Restriction Sites: SgfI-MluI

Cloning Scheme:



Plasmid Map:

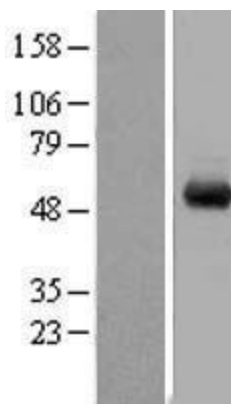


ACCN: NM_017491

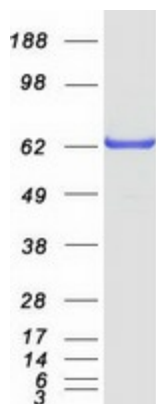
ORF Size: 1818 bp

OTI Disclaimer:	The molecular sequence of this clone aligns with the gene accession number as a point of reference only. However, individual transcript sequences of the same gene can differ through naturally occurring variations (e.g. polymorphisms), each with its own valid existence. This clone is substantially in agreement with the reference, but a complete review of all prevailing variants is recommended prior to use. More info
OTI Annotation:	This clone was engineered to express the complete ORF with an expression tag. Expression varies depending on the nature of the gene.
Components:	The ORF clone is ion-exchange column purified and shipped in a 2D barcoded Matrix tube containing 10ug of transfection-ready, dried plasmid DNA (reconstitute with 100 ul of water).
Reconstitution Method:	<ol style="list-style-type: none">1. Centrifuge at 5,000xg for 5min.2. Carefully open the tube and add 100ul of sterile water to dissolve the DNA.3. Close the tube and incubate for 10 minutes at room temperature.4. Briefly vortex the tube and then do a quick spin (less than 5000xg) to concentrate the liquid at the bottom.5. Store the suspended plasmid at -20°C. The DNA is stable for at least one year from date of shipping when stored at -20°C.
RefSeq:	NM_017491.5
RefSeq Size:	3160 bp
RefSeq ORF:	1821 bp
Locus ID:	9948
UniProt ID:	O75083
Cytogenetics:	4p16.1
Domains:	WD40
MW:	66.2 kDa
Gene Summary:	This gene encodes a protein containing 9 WD repeats. WD repeats are approximately 30- to 40-amino acid domains containing several conserved residues, mostly including a trp-asp at the C-terminal end. WD domains are involved in protein-protein interactions. The encoded protein may help induce the disassembly of actin filaments. Two transcript variants encoding different isoforms have been found for this gene. [provided by RefSeq, Jul 2008]

Product images:



Western blot validation of overexpression lysate (Cat# [LY402592]) using anti-DDK antibody (Cat# [TA50011-100]). Left: Cell lysates from untransfected HEK293T cells; Right: Cell lysates from HEK293T cells transfected with RC200303 using transfection reagent MegaTran 2.0 (Cat# [TT210002]).



Coomassie blue staining of purified WDR1 protein (Cat# [TP300303]). The protein was produced from HEK293T cells transfected with WDR1 cDNA clone (Cat# RC200303) using MegaTran 2.0 (Cat# [TT210002]).