

## Product datasheet for **RC200295**

### **KBTBD10 (KLHL41) (NM\_006063) Human Tagged ORF Clone**

#### **Product data:**

Product Type:	Expression Plasmids
Product Name:	KBTBD10 (KLHL41) (NM_006063) Human Tagged ORF Clone
Tag:	Myc-DDK
Symbol:	KBTBD10
Synonyms:	KBTBD10; Krp1; SARCOSIN
Mammalian Cell Selection:	Neomycin
Vector:	pCMV6-Entry (PS100001)
E. coli Selection:	Kanamycin (25 ug/mL)



[View online »](#)

**ORF Nucleotide Sequence:**

>RC200295 ORF sequence  
 Red=Cloning site Blue=ORF Green=Tags(s)

TTTTGTAATACGACTCACTATAGGGCGGCCGGAATTCGTCGACTGGATCCGGTACCGAGGAGATCTGCC  
 GCC**GCGATCGCC**

ATGGATTCCAGCGGAACTTGCAGAGAACTGCGGCTTTACCAATCCACCTTCTTCAGGATGGTCTAA  
 AAGATCTCCTGGATGAGAAAAAATTCATCGATTGCACCCTAAAAGCAGGTGACAAAAAGTCTTCCTTGCCA  
 CAGATTGATTTTGTAGCTTGTAGTCTTACTTCCGTGAGTACTTTTTATCTGAAATTGATGAGGCGAAA  
 AAAAGGAGGTAGTGCTAGACAATGTGGATCCTGCTATACTTGATTTAATCATCAAAATACCTGACTCTG  
 CCAGTATTGATCTCAATGACGAAATGTCAAGATATTTTTGCATTGGCCAGCCGCTTTCAGATCCCCTC  
 AGTGTACTGTCTGCGTTTCTTATCTCAGAAAAAGACTTGCTCCTGTAAGTGTCTAGCCATCCTAAGA  
 TTAGGACTTCTTCTGACTGCCGAGACTCGCCATTTCTGCCGTGAATTTGTGTCTGATCGCTTGTAC  
 AGATTTGTAAGGAAGAGGACTTTATGCAACTGTCTCCACAGGAAGTATCTCAGTCAATTTCAAATGACAG  
 CCTAAATGTAGAAAAAGAAGAAGCAGTATTTGAGGCAGTATGAAATGGGTGCGAACAGACAAGGAAAAC  
 AGGGTTAAAAACCTTAGTGAAGTGTGATTGTATCCGTTTTCGCCTTATGACAGAAAAATATTTAAAGG  
 ATCATGTTGAGAAAGATGATATAATTAAGCAACCCAGACCTCCAGAAAAAATCAAAGTTCTAAAAGA  
 TGCTTTCGAGGCAAACTCCCAGAACCTAGCAAAAATGCCCGAAGACTGGGGCTGGTGAGGTGAATGGT  
 GATGTTGGTGATGAAGATTTACTTCTGGTTACCTGAATGACATTCACAGGCATGGAATGTTTGTAAAAG  
 ACCTCATCCTCTTGGTTAATGACACAGCAGCAGTGGCTTATGACCCACGGAAAAATGAATGCTACCTTAC  
 TGCACTGGCTGAGCAGATCCCAGAAATCATTCCAGCATTGTTACCCAGCAAAAATCAGATATATGGGTA  
 GGAGGACTATATGTGGATGAAGAAAAAAGGATCAACCTCTACAGTCATACTTCTCCAGCTCGATAGCA  
 TAGCATCTGAATGGGTTGGACTTCCACCTCTGCCTTCAGCCAGGTGTCTTTCGGTGGGAGAGGTGGA  
 TGATAAAATCTATGTAGTTGCAGGCAAAAGACCTTCAAACAGAGGCTTCGCTGGATTTCAGTATTATGCTAT  
 GATCCTGTGGCTGCAAAAATGGAACGAAGTAAAAAACTCCCTATCAAAGTCTATGGCCATAATGTGATTT  
 CACATAAAGGGATGATATATTGTCTAGGAGGAAAGACAGATGACAAAAATGTACAAACAGGGTGTATTAT  
 CTTCAACCCCAAAAAAGGAGATTGGAAAGATCTGGCTCCAATGAAAATTCCTCGTTCCATGTTTGGAGTA  
 GCAGTCCATAAAGGCAAAATTTGATTGCAGGAGGTGCACTGAAGATGGTCTTTCAGCTTCAGTTGAAG  
 CTTTTGACCTTACAACAAATAAATGGGATGTAATGACCGAATTTCCCAAGAAAGAAGCTCCATCAGTTT  
 GGTGAGCCTGGCTGGATCTCTGTATGCAATTTGGTGGTTTTGCTATGATTCAACTGGAGTCTAAAGAATTT  
 GCACCCACTGAAGTCAATGACATATGGAAGTATGAAGATGATAAAAAAGAATGGGCTGGGATGTTGAAGG  
 AAATACGTTATGCTTCAGGAGCTAGTTGCCTAGCAACACGTTTAAATCTTCAAAGTGTCTAAACTG

**ACGCGT**ACGCGGCCGCTCGAGCAGAAACTCATCTCAGAAGAGGATCTGGCAGCAAATGATATCCTGGATT  
 ACAAGGATGACGACGATAAGGTTTAA

**Protein Sequence:**

>RC200295 protein sequence  
 Red=Cloning site Green=Tags(s)

MDSQRELAEELRLYQSTLLQDGLKDLLDEKFIIDCTLKAGDKSLPCHRLILSACSPYFREYFLSEIDEAK  
 KKEVVDLNDVPAILDLIKLYLSASIDLNDGNVQDIFALASRFQIPSVFTVCVSYLQKRLAPGNCLAILR  
 LGLLLDCPRLAISAREFVSDRFVQICKEEDFMQLSPQELISVISNDSLNVEKEEAVFEAVMKWVRTDKEN  
 RVKNLSEVFDICIRFLMTEKYFKDHVEKDDIIKSNPDLQKKIKVLKDAFAGKLEPEPKNAKTGAGEVNG  
 DVGDEDLLPGYLNDIPRHGMFVKDLILLVNDTAAVAYDPTENECYLTALAEQIPRNHSSIVTQQNQIYVV  
 GGLYVDEENKDQPLQSYFFQLDSIASEWGLPPLPSARCLFGLGEVDDKIYVVAGKDLQTEASLDSVLCY  
 DPVAAKWNEVKKLPKIVYGHNVISHKGMICYLGGKTDDKCTNRVIFNPKKGDWKLAPMKIPRSMFGV  
 AVHKGKIVIAGGVTEGLSASVEAFDLTTNKWDMTEFFPQERSISLVSLAGSLYAIGGFAMIQLESKEF  
 APTEVNDIWKYEDDKKEWAGMLKEIRYASGASCLATRLNLFKLSKL

**TR**TRPLEQKLISEEDLAANDILDYKDDDDKV

**Chromatograms:**

[https://cdn.origene.com/chromatograms/mk6668\\_h01.zip](https://cdn.origene.com/chromatograms/mk6668_h01.zip)

Restriction Sites: SgfI-MluI

Cloning Scheme:



ACCN: NM\_006063

ORF Size: 1818 bp

OTI Disclaimer: The molecular sequence of this clone aligns with the gene accession number as a point of reference only. However, individual transcript sequences of the same gene can differ through naturally occurring variations (e.g. polymorphisms), each with its own valid existence. This clone is substantially in agreement with the reference, but a complete review of all prevailing variants is recommended prior to use. [More info](#)

OTI Annotation: This clone was engineered to express the complete ORF with an expression tag. Expression varies depending on the nature of the gene.

Components: The ORF clone is ion-exchange column purified and shipped in a 2D barcoded Matrix tube containing 10ug of transfection-ready, dried plasmid DNA (reconstitute with 100 ul of water).

- Reconstitution Method:
1. Centrifuge at 5,000xg for 5min.
  2. Carefully open the tube and add 100ul of sterile water to dissolve the DNA.
  3. Close the tube and incubate for 10 minutes at room temperature.
  4. Briefly vortex the tube and then do a quick spin (less than 5000xg) to concentrate the liquid at the bottom.
  5. Store the suspended plasmid at -20°C. The DNA is stable for at least one year from date of shipping when stored at -20°C.

Note: Plasmids are not sterile. For experiments where strict sterility is required, filtration with 0.22um filter is required.

RefSeq: [NM\\_006063.3](#)

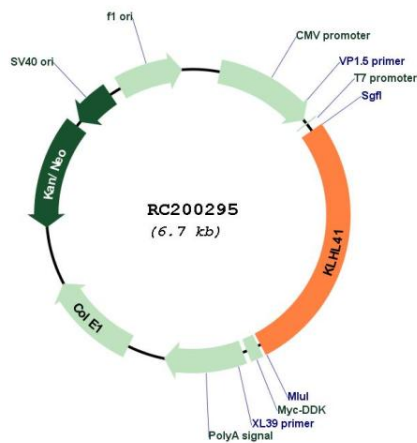
RefSeq Size: 2472 bp

RefSeq ORF: 1821 bp

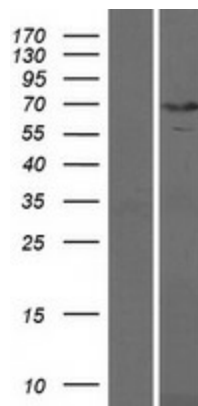
**Locus ID:** 10324  
**UniProt ID:** [O60662](#)  
**Cytogenetics:** 2q31.1  
**Domains:** Kelch  
**MW:** 68 kDa

**Gene Summary:** This gene is a member of the kelch-like family. The encoded protein contains a BACK domain, a BTB/POZ domain, and 5 Kelch repeats. This protein is thought to function in skeletal muscle development and maintenance. Mutations in this gene have been associated with nemaline myopathy (NM), a rare congenital muscle disorder. [provided by RefSeq, Mar 2015]

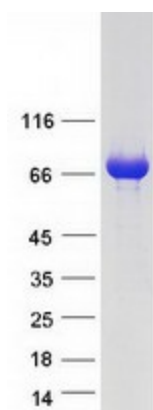
### Product images:



Circular map for RC200295



Western blot validation of overexpression lysate (Cat# [LY416896]) using anti-DDK antibody (Cat# [TA50011-100]). Left: Cell lysates from untransfected HEK293T cells; Right: Cell lysates from HEK293T cells transfected with RC200295 using transfection reagent MegaTran 2.0 (Cat# [TT210002]).



Coomassie blue staining of purified KLHL41 protein (Cat# [TP300295]). The protein was produced from HEK293T cells transfected with KLHL41 cDNA clone (Cat# RC200295) using MegaTran 2.0 (Cat# [TT210002]).