

Product datasheet for **RC200283**

Noelin (OLFM1) (NM_014279) Human Tagged ORF Clone

Product data:

Product Type:	Expression Plasmids
Product Name:	Noelin (OLFM1) (NM_014279) Human Tagged ORF Clone
Tag:	Myc-DDK
Symbol:	Noelin
Synonyms:	AMY; NOE1; NOELIN1; OlfA
Mammalian Cell Selection:	Neomycin
Vector:	pCMV6-Entry (PS100001)
E. coli Selection:	Kanamycin (25 ug/mL)



[View online »](#)

ORF Nucleotide Sequence:

>RC200283 ORF sequence
 Red=Cloning site Blue=ORF Green=Tags(s)

TTTTGTAATACGACTCACTATAGGGCGGCCGGAATTCGTCGACTGGATCCGGTACCGAGGAGATCTGCC
 GCC**CGGATCGCC**

ATGCCAGGTCGTTGGAGGTGGCAGCGAGACATGCACCCGGCCCGAAGCTCCTCAGCCTCCTCTTCTCA
 TCCTGATGGGCACTGAACTCACTCAAGTCTGCCACCAACCCTGAGGAGAGCTGGCAGGTGTACAGCTC
 TGCCAGGACAGCGAGGGCAGGTGTATCTGCACAGTGGTCGCCCCACAGCAGACCATGTGTTACGGGAT
 GCCCGCACAAAACAGCTGAGGCAGCTACTGGAGAAGGTGCAGAACATGTCTCAATCCATAGAGGTCTTGG
 ACAGGGCGACCCAGAGAGACTTGCAGTACGTGGAGAAGATGGAGAACCAATGAAAGGACTGGAGTCCAA
 GTTCAAACAGGTGGAGGAGATCATAAGCAACACCTGGCCAGGCAGTTTAAAGCGATAAAAAGCGAAAATG
 GATGAACCTTAGGCCTTTGATACCTGTGTTGGAAGAGTACAAGGCCGATGCCAAATGGTATTGCAGTTTA
 AAGAGGAGGTCCAGAATCTGACGTCACTGCTTAAAGAGCTGCAAGAGGAAATGGCGCCTATGACTACGA
 TGAACCTCAGAGCAGAGTGTCCAATCTGAAGAAAGGCTCCGTGCATGCATGCAAAAAGCTAGCTTGGGG
 AAGTTGACGGGCATCAGTGACCCCGTACTGTCAAGACCTCCGGCTCGAGTTCCGGATCCTGGATGACAG
 ACCCTCTCGCCCCTGAAGGCGATAACCGGGTGTGGTACATGGACGGCTATCACAACAACCGCTTCGTACG
 TGAGTACAAGTCCATGGTTGACTTCATGAACACGGACAATTTACCTCCCACCGTCTCCCCACCCCTGG
 TCGGGCACGGGCAGGTGGTCTACAACGGTTCTATCTACTTCAACAAGTTCAGAGCCACATCATCATCA
 GGTTTGACCTGAAGACAGAGACCATCCTCAAGACCCGACGCTGGACTATGCCGGTTACAACAACATGTA
 CCACTACGCTGGGGTGGCCACTCGGACATCGACTCATGGTGGACGAGAGCGGGCTGTGGGCCGTGAC
 GCCACCAACCAGAACGCTGGCAACATCGTGGTCACTAGGCTGGACCCCGTGTCCCTGCAGACCCCTGCAGA
 CCTGGAACACGAGCTACCCCAAGCGCAGCGCCGGGAGGCCTTCATCATCTGCGGCACGCTGTACGTAC
 CAACGGCTACTCAGGGGTACCAAGGTCCACTATGCATACCAGACCAATGCCTCCACCTATGAATACATC
 GACATCCATTCCAGAACAATACTCCACATCTCCATGCTGGACTACAACCCCAAGGACCGGGCCCTGT
 ATGCCTGGAACAACGGCCACCAGATCCTCTACAACGTGACCCCTCTCCACGTATCCGCTCCGACGAGTT
 G

ACGCGTACGCGGCCGCTCGAGCAGAAACTCATCTCAGAAGAGGATCTGGCAGCAAATGATATCCTGGATT
 ACAAGGATGACGACGATAAGGTTTAA

Protein Sequence:

>RC200283 protein sequence
 Red=Cloning site Green=Tags(s)

MPGRWRWQRMHPARKLLSLLFLILMGTELTQVLPNPEESWQVYSSAQDSEGRICITVVAQQTMCSR
 ARTKQLRQLLEKVNMSQSI EVLDRRTQRDLQYVEKMENQMKGLESKFKQVEESHKQHLARQFKAIKAKM
 DELRPLIPVLEEYKADAKLVLFQKEEVQNLTSVLNELQEEIGAYDYDELQSRVSNLEERLRACMQKLACG
 KLTGISDPVTVKTSGRFSGWMTDPLAPEGDNRVWYMDGYHNNRFVREYKSMVDFMNTDNFTSHRPLPHW
 SGTGQVVYNGSIYFNKFQSHIIIRFDLKTETILKTRSLDYAGYNNMYHYAWGGHSDIDLMDVDESGLWAVY
 ATNQNAGNIVVSRLDPVSLQTLQWNTSYPKRSAGEAFIICGTLVYVYNGYSGGTVHYAYQTNASTYEYI
 DIPFNKYSHISMLDYNPKDRALYAWNNGHQILYNVTLFHVIRSDDEL

TRTRPLEQKLI SEEDLAANDILDYKDDDDKV

Chromatograms:

https://cdn.origene.com/chromatograms/mk6206_c03.zip

Restriction Sites:

Sgfl-MluI

Cloning Scheme:

ACCN: NM_014279

ORF Size: 1401 bp

OTI Disclaimer: The molecular sequence of this clone aligns with the gene accession number as a point of reference only. However, individual transcript sequences of the same gene can differ through naturally occurring variations (e.g. polymorphisms), each with its own valid existence. This clone is substantially in agreement with the reference, but a complete review of all prevailing variants is recommended prior to use. [More info](#)

OTI Annotation: This clone was engineered to express the complete ORF with an expression tag. Expression varies depending on the nature of the gene.

Components: The ORF clone is ion-exchange column purified and shipped in a 2D barcoded Matrix tube containing 10ug of transfection-ready, dried plasmid DNA (reconstitute with 100 ul of water).

Reconstitution Method:

1. Centrifuge at 5,000xg for 5min.
2. Carefully open the tube and add 100ul of sterile water to dissolve the DNA.
3. Close the tube and incubate for 10 minutes at room temperature.
4. Briefly vortex the tube and then do a quick spin (less than 5000xg) to concentrate the liquid at the bottom.
5. Store the suspended plasmid at -20°C. The DNA is stable for at least one year from date of shipping when stored at -20°C.

RefSeq: [NM_014279.2](#), [NP_055094.1](#)
RefSeq Size: 2879 bp

RefSeq ORF: 1404 bp

Locus ID: 10439

UniProt ID: [Q99784](#)
Cytogenetics: 9q34.3

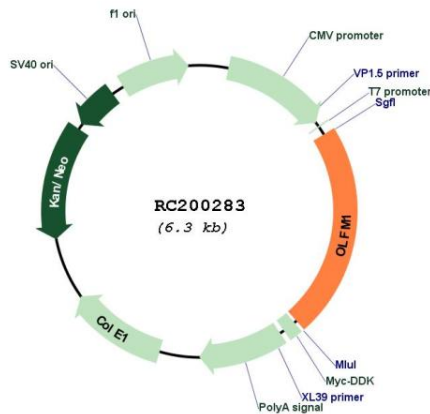
Domains: OLF

Protein Families: Druggable Genome

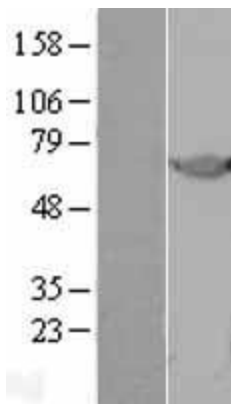
MW: 54.1 kDa

Gene Summary: This gene product shares extensive sequence similarity with the rat neuronal olfactomedin-related ER localized protein. While the exact function of the encoded protein is not known, its abundant expression in brain suggests that it may have an essential role in nerve tissue. Several alternatively spliced transcripts encoding different isoforms have been found for this gene. [provided by RefSeq, Jul 2008]

Product images:



Circular map for RC200283



Western blot validation of overexpression lysate (Cat# [LY402301]) using anti-DDK antibody (Cat# [TA50011-100]). Left: Cell lysates from untransfected HEK293T cells; Right: Cell lysates from HEK293T cells transfected with RC200283 using transfection reagent MegaTran 2.0 (Cat# [TT210002]).