

Product datasheet for **RC200282**

NPC2 (NM_006432) Human Tagged ORF Clone

Product data:

Product Type: Expression Plasmids
Product Name: NPC2 (NM_006432) Human Tagged ORF Clone
Tag: Myc-DDK
Symbol: NPC2
Synonyms: EDDM1; HE1
Mammalian Cell Selection: Neomycin
Vector: pCMV6-Entry (PS100001)
E. coli Selection: Kanamycin (25 ug/mL)
ORF Nucleotide Sequence: >RC200282 ORF sequence
Red=Cloning site Blue=ORF Green=Tags(s)

TTTTGTAATACGACTCACTATAGGGCGGCCGGAATTCGTCGACTGGATCCGGTACCGAGGAGATCTGCC
GCC**CGATCGC**

ATGCGTTTCTGGCAGCTACATTCCTGCTCCTGGCGCTCAGCACCGCTGCCAGGCCGAACCGTGCAGT
TCAAGGACTGCGTTCTGTGGATGGAGTTATAAGGAAGTGAATGTGAGCCCATGCCCAACCAACCCTG
CCAGCTGAGCAAAGGACAGTCTTACAGCGTCAATGTCACCTTCACCAGCAATATTCAGTCTAAAAGCAGC
AAGCCGTGGTGCATGGCATCCTGATGGCGTCCAGTTCCTTTCCATTCTGAGCCTGATGGTTGTA
AGAGTGGAAATTAAGTCCCTATCCAAAAAGACAAGACCTATAGCTACCTGAATAAACTACCAGTGAAAAG
CGAATATCCCTCTATAAACTGGTGGTGGAGTGGCAACTCAGGATGACAAAAACCAAGTCTTCTGTC
TGGGAAATCCAGTACAGATCGTTTCTCATCTC

ACGCGTACGCGGCCGCTCGAGCAGAACTCATCTCAGAAGAGGATCTGGCAGCAAATGATATCCTGGATT
ACAAGGATGACGACGATAAGGTTTAA

Protein Sequence: >RC200282 protein sequence
Red=Cloning site Green=Tags(s)

MRFLAATFLLLALSTAAQAEVQFKDCGSVDGVIKEVNVSPCPTQPCQLSKGQSYSVNVTFTSNIQSKSS
KAVVHGILMGVVPFPIPEPDGCKSGINCPIQDKTYSYLNKLPVKSEYPSIKLVVEWQLQDDKNQSLFC
WEIPVQIVSHL

TRTRPLEQKLISEEDLAANDILDYKDDDDKV

Chromatograms: https://cdn.origene.com/chromatograms/mk6065_f07.zip



[View online >](#)

Restriction Sites: SgfI-MluI

Cloning Scheme:



ACCN: NM_006432

ORF Size: 453 bp

OTI Disclaimer: The molecular sequence of this clone aligns with the gene accession number as a point of reference only. However, individual transcript sequences of the same gene can differ through naturally occurring variations (e.g. polymorphisms), each with its own valid existence. This clone is substantially in agreement with the reference, but a complete review of all prevailing variants is recommended prior to use. [More info](#)

OTI Annotation: This clone was engineered to express the complete ORF with an expression tag. Expression varies depending on the nature of the gene.

Components: The ORF clone is ion-exchange column purified and shipped in a 2D barcoded Matrix tube containing 10ug of transfection-ready, dried plasmid DNA (reconstitute with 100 ul of water).

Reconstitution Method:

1. Centrifuge at 5,000xg for 5min.
2. Carefully open the tube and add 100ul of sterile water to dissolve the DNA.
3. Close the tube and incubate for 10 minutes at room temperature.
4. Briefly vortex the tube and then do a quick spin (less than 5000xg) to concentrate the liquid at the bottom.
5. Store the suspended plasmid at -20°C. The DNA is stable for at least one year from date of shipping when stored at -20°C.

Note: Plasmids are not sterile. For experiments where strict sterility is required, filtration with 0.22um filter is required.

RefSeq: [NM_006432.5](#)

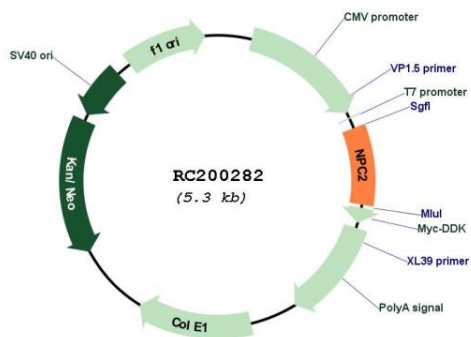
RefSeq Size: 921 bp

RefSeq ORF: 456 bp

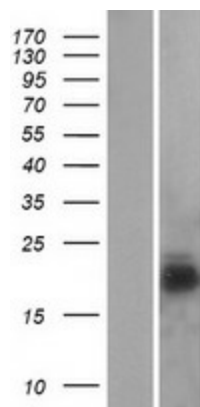
Locus ID: 10577
UniProt ID: [P61916](#)
Cytogenetics: 14q24.3
Domains: ML
Protein Families: Druggable Genome, Secreted Protein
MW: 16.6 kDa

Gene Summary: This gene encodes a protein containing a lipid recognition domain. The encoded protein may function in regulating the transport of cholesterol through the late endosomal/lysosomal system. Mutations in this gene have been associated with Niemann-Pick disease, type C2 and frontal lobe atrophy. [provided by RefSeq, Jul 2008]

Product images:



Circular map for RC200282



Western blot validation of overexpression lysate (Cat# [LY401935]) using anti-DDK antibody (Cat# [TA50011-100]). Left: Cell lysates from untransfected HEK293T cells; Right: Cell lysates from HEK293T cells transfected with RC200282 using transfection reagent MegaTran 2.0 (Cat# [TT210002]).