

## Product datasheet for **RC200280**

### IPP 2 (PPP1R2) (NM\_006241) Human Tagged ORF Clone

#### Product data:

**Product Type:** Expression Plasmids  
**Product Name:** IPP 2 (PPP1R2) (NM\_006241) Human Tagged ORF Clone  
**Tag:** Myc-DDK  
**Symbol:** IPP 2  
**Synonyms:** IPP-2; IPP2; PPP1R2A  
**Mammalian Cell Selection:** Neomycin  
**Vector:** pCMV6-Entry (PS100001)  
**E. coli Selection:** Kanamycin (25 ug/mL)  
**ORF Nucleotide Sequence:** >RC200280 ORF sequence  
 Red=Cloning site Blue=ORF Green=Tags(s)

TTTTGTAATACGACTCACTATAGGGCGCCGGGAATTCGTCGACTGGATCCGGTACCGAGGAGATCTGCC  
 GCC**CGATCGCC**

ATGGCGGCTCGACGGCCTCGCACCGGCCATCAAGGGGATCTTGAAGAACAAGACCTCTACGACTTCT  
 CTATGGTGGCGTCGCGCAACAGCCCCGCGGAATGTCGACGAGGAGCTGAGCAAAAATCCCAGAAGTG  
 GGATGAAATGAACATCTGGCGACGTATCATCCAGCAGACAAAGACTATGGTTTAAATGAAAATAGATGAA  
 CCAAGCACTCCTTACCATAGTATGATGGGGATGATGAAGATGCCTGTAGTGACACCGAGGCCACTGAAG  
 CCATGGCGCCAGACATCTTAGCCAGGAAATTAGCTGCAGCTGAAGCTTGAGCCAAAGTATCGGATTCA  
 GGAACAAGAAAGCAGTGGAGAGGAGGATAGTGACCTCTCACCTGAAGAACGAGAAAAAAGCGACAATTT  
 GAAATGAAAAGGAAGCTTCACTACAATGAAGACTCAATATCAAAGTACGAGACAATTAATTTCAAAG  
 ACCTACATGATGATGATGAAGATGAAGAAATGTTAGAGACTGCAGATGGAGAAAGCATGAATACGGAAAGA  
 ATCAAATCAAGGATCTACTCCAAGTGACCAACAGCAAAACAAATTACGAAGTTCA

**ACGCGT**ACGCGGCCGCTCGAGCAGAACTCATCTCAGAAGAGGATCTGGCAGCAATGATATCCTGGATT  
 ACAAGGATGACGACGATAAGGTTTAA

**Protein Sequence:** >RC200280 protein sequence  
 Red=Cloning site Green=Tags(s)

MAASTASHRPIKILKNKTSTTSSMVASAEQPRGNVDEELSKKSQKWDEMNILATYHPADKDYGLMKIDE  
 PSTPYHSMGDDDEDACSDTEATEAMAPDILARKLAAAEGLEPKYRIQEQESSGEEDSDL SPEEREKKRQF  
 EMKRKLHYNELNIKLRQLISKDLHDDDEDEEMLETADGESMNTEESNQGSTPDSQQQNKLRSS

**TRTRPLEQKLISEEDLAANDILDYKDDDDKV**



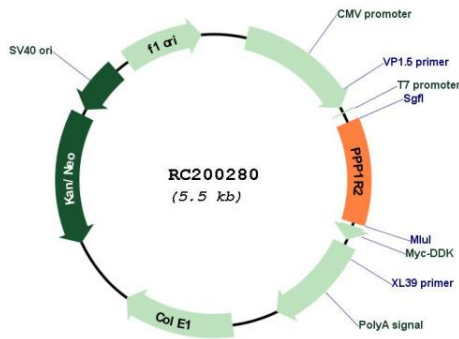
[View online »](#)



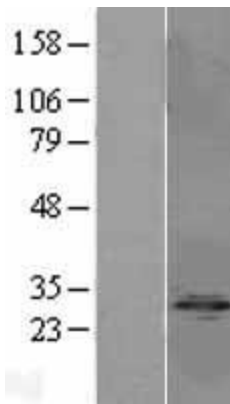
**UniProt ID:** [P41236](#)  
**Cytogenetics:** 3q29  
**Domains:** IPP-2  
**Protein Families:** Druggable Genome  
**MW:** 23 kDa

**Gene Summary:** Protein phosphatase-1 (PP1) is one of the main eukaryotic serine/threonine phosphatases. The protein encoded by this gene binds to the catalytic subunit of PP1, strongly inhibiting its activity. Ten related pseudogenes have been found throughout the human genome. Several splice variants encoding different isoforms have been found for this gene. [provided by RefSeq, Oct 2015]

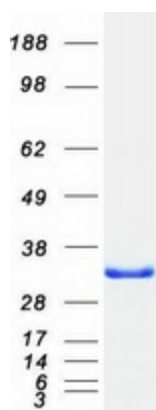
**Product images:**



Circular map for RC200280



Western blot validation of overexpression lysate (Cat# [LY401878]) using anti-DDK antibody (Cat# [TA50011-100]). Left: Cell lysates from untransfected HEK293T cells; Right: Cell lysates from HEK293T cells transfected with RC200280 using transfection reagent MegaTran 2.0 (Cat# [TT210002]).



Coomassie blue staining of purified PPP1R2 protein (Cat# [TP300280]). The protein was produced from HEK293T cells transfected with PPP1R2 cDNA clone (Cat# RC200280) using MegaTran 2.0 (Cat# [TT210002]).