

## Product datasheet for RC200272

### PPT2 (NM\_005155) Human Tagged ORF Clone

#### Product data:

Product Type:	Expression Plasmids
Product Name:	PPT2 (NM_005155) Human Tagged ORF Clone
Tag:	Myc-DDK
Symbol:	PPT2
Synonyms:	C6orf8; G14; PPT-2
Mammalian Cell Selection:	Neomycin
Vector:	pCMV6-Entry (PS100001)
E. coli Selection:	Kanamycin (25 ug/mL)
ORF Nucleotide Sequence:	>RC200272 ORF sequence Red=Cloning site Blue=ORF Green=Tags(s)

TTTTGTAATACGACTCACTATAGGGCGGCCGGAATTCGTCGACTGGATCCGGTACCGAGGAGATCTGCC  
GCC**CGATCGCC**

ATGCTGGGGCTCTGGGGCAGCGGCTCCCCGGGCGTGGGTCCTGCTTCTGTTGCCTTTCTGCCGCTGC  
TGCTGCTTGCAGCCCCGCGCCACCGCGCTCCTACAAGCCGGTCATCGTGGTGCATGGGCTCTTCGA  
CAGCTCGTACAGCTTCCGCCACCTGCTGGAATACATCAATGAGACACACCCGGGACTGTGGTGACAGTG  
CTCGATCTTTCGATGGGAGAGAGAGCTTGGCACCCTGTGGAACAGGTGCAAGGGTCCGAGAGGCTG  
TGGTCCCATCATGGCAAAGGCCCTCAAGGGTGCATCTCATCTGCTACTCGCAGGGGGCCTTGTGTG  
CCGGGCTCTGCTTCTGTGATGGATGATACAAGTGGATTCTTTCATCTCCCTCTCCTCCACAGATG  
GGACAGTATGGAGACACGGACTACTTGAAGTGGCTGTTCCACCTCCATGCGGTCTAACCTCTATCGGA  
TCTGCTATAGCCCTGGGGCCAGGAATTCTCCATCTGCAACTACTGGCATGATCCCACCACGATGACTT  
GTACCTCAATGCCAGCAGCTTCTGGCCCTGATCAATGGGAAAGAGACCATCCCAATGCCACAGTATGG  
CGGAAGAACTTTCTGCGTGTGGGCCACCTGGTCTGATTGGGGCCCTGATGATGGTGTATTACTCCCT  
GGCAGTCCAGCTTCTTTGGTTTCTATGATGAAATGAGACCGTCTGGAGATGGAGGAGCAACTGGTTTA  
TCTGCGGATTCTTTGGTTTGAAGACTCTATTGGCCCGGGGGCCATAGTGAGGTGTCCAATGGCCGGT  
ATCTCCACACAGCCTGGCACTCAACCGTACCCTTATGAGACCTGCATTGAACCTTGGCTCTCC

**ACGCGT**ACGCGGCCGCTCGAGCAGAAACTCATCTCAGAAGAGGATCTGGCAGCAAATGATATCCTGGATT  
ACAAGGATGACGACGATAAGGTTTAA



[View online »](#)

**Protein Sequence:** >RC200272 protein sequence  
 Red=Cloning site Green=Tags(s)

MLGLWGQRLPAAWVLLLLPFLPLLLLLAAPAPHRASYKPVIVVHGLFDSSYSFRHLLLEYINETHPGTVVTV  
 LDLFDGRESLRPLWEQVQGFREAVVPIMAKAPQGVHLICYSQGGLVCRALLSVMDHNVDSFISLSSPQM  
 GQYGD TDY LKWL FPT SMRNL YR ICYSPWGQEF S ICNYWHDPHHDDL YLNASSFLAL INGERDHPNATVW  
 RKNFLRVGHLVL IGGPDDGVITPWQSSFFGFYDANETVLEMEEQLVYL RDSFGLKTL LARGAIVRCPMAG  
 ISHTAWHSNR TLYETCIEPWLS

TRTRPLEQKLISEEDLAANDILDYKDDDDKV

**Chromatograms:** [https://cdn.origene.com/chromatograms/mk6057\\_b06.zip](https://cdn.origene.com/chromatograms/mk6057_b06.zip)

**Restriction Sites:** SgfI-MluI

**Cloning Scheme:**

Cloning sites used for ORF Shuttling:



\* The last codon before the Stop codon of the ORF

**ACCN:** NM\_005155

**ORF Size:** 906 bp

**OTI Disclaimer:** The molecular sequence of this clone aligns with the gene accession number as a point of reference only. However, individual transcript sequences of the same gene can differ through naturally occurring variations (e.g. polymorphisms), each with its own valid existence. This clone is substantially in agreement with the reference, but a complete review of all prevailing variants is recommended prior to use. [More info](#)

**OTI Annotation:** This clone was engineered to express the complete ORF with an expression tag. Expression varies depending on the nature of the gene.

**Components:** The ORF clone is ion-exchange column purified and shipped in a 2D barcoded Matrix tube containing 10ug of transfection-ready, dried plasmid DNA (reconstitute with 100 ul of water).

**Reconstitution Method:**

1. Centrifuge at 5,000xg for 5min.
2. Carefully open the tube and add 100ul of sterile water to dissolve the DNA.
3. Close the tube and incubate for 10 minutes at room temperature.
4. Briefly vortex the tube and then do a quick spin (less than 5000xg) to concentrate the liquid at the bottom.
5. Store the suspended plasmid at -20°C. The DNA is stable for at least one year from date of shipping when stored at -20°C.

**RefSeq:** [NM\\_005155.5](#), [NP\\_005146.3](#)

**RefSeq Size:** 2063 bp

**RefSeq ORF:** 909 bp

**Locus ID:** 9374

**UniProt ID:** [Q9UMR5](#)

**Cytogenetics:** 6p21.32

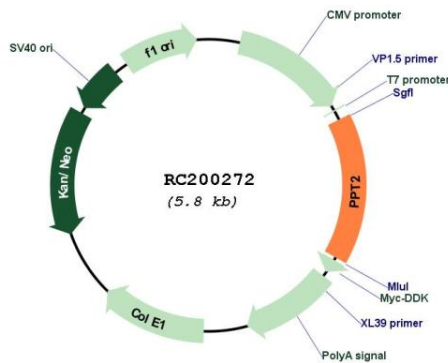
**Protein Families:** Transmembrane

**Protein Pathways:** Fatty acid elongation in mitochondria, Lysosome, Metabolic pathways

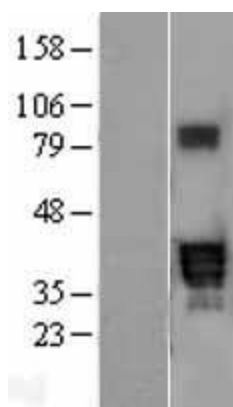
**MW:** 34.3 kDa

**Gene Summary:** This gene encodes a member of the palmitoyl-protein thioesterase family. The encoded glycosylated lysosomal protein has palmitoyl-CoA hydrolase activity in vitro, but does not hydrolyze palmitate from cysteine residues in proteins. Alternative splicing results in multiple transcript variants. Read-through transcription also exists between this gene and the downstream EGFL8 (EGF-like-domain, multiple 8) gene. [provided by RefSeq, Feb 2011]

**Product images:**



Circular map for RC200272



Western blot validation of overexpression lysate (Cat# [LY401578]) using anti-DDK antibody (Cat# [TA50011-100]). Left: Cell lysates from untransfected HEK293T cells; Right: Cell lysates from HEK293T cells transfected with RC200272 using transfection reagent MegaTran 2.0 (Cat# [TT210002]).