

Product datasheet for **RC200271**

GPAA1 (NM_003801) Human Tagged ORF Clone

Product data:

Product Type:	Expression Plasmids
Product Name:	GPAA1 (NM_003801) Human Tagged ORF Clone
Tag:	Myc-DDK
Symbol:	GPAA1
Synonyms:	GAA1; GPIBD15; hGAA1
Mammalian Cell Selection:	Neomycin
Vector:	pCMV6-Entry (PS100001)
E. coli Selection:	Kanamycin (25 ug/mL)



[View online »](#)

ORF Nucleotide Sequence:

>RC200271 ORF sequence
 Red=Cloning site Blue=ORF Green=Tags(s)

TTTTGTAATACGACTCACTATAGGGCGGCCGGAATTCGTCGACTGGATCCGGTACCGAGGAGATCTGCC
 GCC**CGGATCGCC**

ATGGGCCTCTGTGCGACCCGGTTCGCGCGCGCGCTCGCCCGCTAGTGTGCGCCTCAACGCGCCGT
 TGTGCGTGTGAGCTACGTGGCGGCATCGCCTGGTCTTGCGCGTGGTTTTCCCGCCGCTGACCCAGCG
 CACTTACATGTCGGAGAACGCCATGGGCTCCACCATGGTGGAGGAGCAGTTTTCGGGGCGGAGACCGTGCC
 CGGGCTTTTCCCGGGACTTCGCGCGCCACCGCAAGAAGTCGGGGGCTCTGCCAGTGGCCTGGCTTGAAC
 GGACGATGCGGTGAGTGGGCTGGAGGTCTACACGCAGAGTTTCTCCCGAAACTGCCCTCCAGATGA
 GACCCACGAGCGCTATATGGTGTGCGGCACCAACGTGTACGGCATCTGCGGGCCCCGCGTGTGCCAGC
 ACCGAGTCGCTTGTGCTCACCGTGCCTGTGGCTGACTCTACCAACAGCCAGGCTGTGGGGCTGTGTC
 TGGCACTGGCTGCCACTTCCGGGGCAGATTTATTGGGCCAAAGATATCGTCTTCTGGTAACAGAACA
 TGACCTTCTGGGCACTGAGGCTTGGCTTGAAGCCTACCACGATGTCAATGCTCACTGGCATGCAGTGTCT
 CCCTGCAGGGCCGAGCTGGGGCCATTCAGGCAGCCGTGGCCCTGGAGCTGAGCAGTGTGGTACCA
 GCCTCGATGTGGCCGTGGAGGGCTTAACGGGCAGCTGCCCAACCTTGACCTGTCAATCTCTCCAGAC
 CTTCTGCCAGAAAGGGGCTGTGTGCACGCTTCAGGGCAAGCTGCAGCCCAGGACTGGACATCATTG
 GATGGACCGTGCAGGGCCTGCAGACACTGCTGCTCATGGTTCTGCGGCAGGCTCCGGCCGCCCCACG
 GCTCCCATGGCCTCTTCTGCGCTACCGTGTGGAGGCCATAACCTGCGTGGCATCAATAGCTTCCGCCA
 GTACAAGTATGACCTGGTGGCAGTGGCAAGGCTTGGAGGGCATGTTCCGCAAGCTCAACCACCTCCTG
 GAGCGCTGCACCACTCCTTCTCTACTTGTCTCCCGGCTCTCCCGCTTCTGCTCCATCGGCTCT
 ACATGCCCGCTGTGCGCTTCTTGTCTCTGCTCCTGGTCTTGGTCTCAAGGCTCTGGAAGTGGATGCA
 TGAGGCTGGAATGGCCCTTGGAGAGCCCGGGGTGCCCTGGCCCCAGTGTACCCCTTCCCCATCACAG
 GGTGTGGGGCTGGCCTCGCTCGTGGCACCTCTGCTGATCTCACAGGCATGGGACTGGCCCTCTATGTCC
 TGCCAGTGTGGGCCAACACGTTGCCACCCAGCACTTCCAGTGGCAGAGGCTGAGGCTGTGGTGTGAC
 ACTGCTGGCGATTTATGCAGCTGGCCTGGCCCTGCCCCACAATACCCACCGGGTGGTAAGCACACAGGCC
 CCAGACAGGGGCTGGATGGCACTGAAGTGGTAGCCCTGATCTACCTAGCACTGCAGTGGGCTGCATCG
 CCCTCACCAACTTCTCACTGGGCTTCTGCTGGCCACCACCATGGTGGCCACTGCTGCGCTTGCCAAGCC
 TCATGGGCCCCGACCCTCTATGCTGCCCTGCTGGTGTGACCAGCCCGGAGCCAGCTCCTTGGCAGC
 CTGTTCTGTGGCGGAGCTGCAGGAGGCCACTGTCACTGGCCGAGGGCTGGCAGCTCTTCTGGCAG
 CGCTAGCCAGGGTGTGCTGGAGCACCACCTACGGCGCCCTGCTCTCCCACTGCTGTCCCTGGCCCT
 CTACCCCTGCTGGCTGCTTTTCTGGAATGTGCTCTTCTGGAAG

ACGCGTACGCGGCCGCTCGAGCAGAAACTCATCTCAGAAGAGGATCTGGCAGCAAATGATATCCTGGATT
 ACAAGGATGACGACGATAAGGTTTAA

Protein Sequence:

>RC200271 protein sequence
 Red=Cloning site Green=Tags(s)

MGLLSDPVRRRALARLVLRNAPLCVLSYVAGIAWFLALVFPPLTQRTYMSENAMGSTMVEEQFAGGDRA
 RAFARDFAAHRKKSALPVAWLERTMRSVGLVYVYQSFYRKLFPDPETHERYMVSGTINVYGLRAPRAAS
 TESLVLTVPCGSDSTNSQAVGLLLALAAHFRGQIYWAKDIVFLVTEHDLGTEAWLEAYHDVNVVTGMQSS
 PLQGRAGAIQAAVALELSSDVVTSLDVAVEGLNGQLPNLDLLNLFQTFQKGGLLCTLQKLPEDWTSL
 DGPLQGLQTLMLVLRQASGRPHGSHGLFLRYRVEALTLRGINSFRQYKIDLAVGKALEGMFRKLNHLL
 ERLHQSFLLYLLPGLSRFVSIPLYMPAVGFLLLVLGLKALELWMQLHEAGMGLEEPGGAPGPSVPLPPSQ
 GVGLASLVAPLLISQAMGLALYVLPVLGQHVATQHFVPAEAEAVVLTLLAIYAAGLALPHNTHRVVSTQA
 PDRGWMALKLVALIYLALQLGCIALTNFSLGFLATTMVPPTAALAKPHGPRTLAAALLVLTSPAATLLGS
 LFLWRELQEAPLSLAEGWQLFLAALAQQVLEHHTYGALLFPLLSLGLYPCWLLFNNVLFWK

TRTRPLEQKLISEEDLAANDILDYKDDDDKV

Chromatograms: https://cdn.origene.com/chromatograms/mk6397_e06.zip

Restriction Sites: SgfI-MluI

Cloning Scheme:



ACCN: NM_003801

ORF Size: 1863 bp

OTI Disclaimer: The molecular sequence of this clone aligns with the gene accession number as a point of reference only. However, individual transcript sequences of the same gene can differ through naturally occurring variations (e.g. polymorphisms), each with its own valid existence. This clone is substantially in agreement with the reference, but a complete review of all prevailing variants is recommended prior to use. [More info](#)

OTI Annotation: This clone was engineered to express the complete ORF with an expression tag. Expression varies depending on the nature of the gene.

Components: The ORF clone is ion-exchange column purified and shipped in a 2D barcoded Matrix tube containing 10ug of transfection-ready, dried plasmid DNA (reconstitute with 100 ul of water).

Reconstitution Method:

1. Centrifuge at 5,000xg for 5min.
2. Carefully open the tube and add 100ul of sterile water to dissolve the DNA.
3. Close the tube and incubate for 10 minutes at room temperature.
4. Briefly vortex the tube and then do a quick spin (less than 5000xg) to concentrate the liquid at the bottom.
5. Store the suspended plasmid at -20°C. The DNA is stable for at least one year from date of shipping when stored at -20°C.

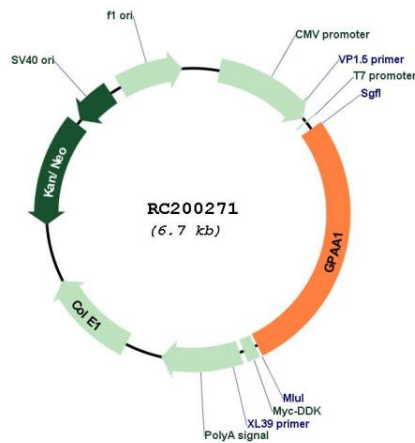
RefSeq: [NM_003801.4](#)

RefSeq Size: 2105 bp

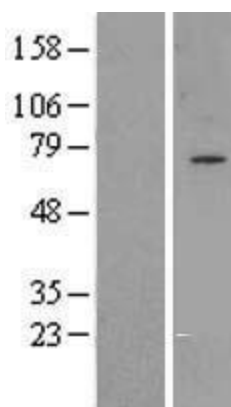
RefSeq ORF: 1866 bp

Locus ID: 8733
UniProt ID: [O43292](#)
Cytogenetics: 8q24.3
Domains: Gaa1
Protein Families: Transmembrane
Protein Pathways: Glycosylphosphatidylinositol(GPI)-anchor biosynthesis, Metabolic pathways
MW: 67.6 kDa
Gene Summary: Posttranslational glycosylphosphatidylinositol (GPI) anchor attachment serves as a general mechanism for linking proteins to the cell surface membrane. The protein encoded by this gene presumably functions in GPI anchoring at the GPI transfer step. The mRNA transcript is ubiquitously expressed in both fetal and adult tissues. The anchor attachment protein 1 contains an N-terminal signal sequence, 1 cAMP- and cGMP-dependent protein kinase phosphorylation site, 1 leucine zipper pattern, 2 potential N-glycosylation sites, and 8 putative transmembrane domains. [provided by RefSeq, Jul 2008]

Product images:



Circular map for RC200271



Western blot validation of overexpression lysate (Cat# [LY418421]) using anti-DDK antibody (Cat# [TA50011-100]). Left: Cell lysates from untransfected HEK293T cells; Right: Cell lysates from HEK293T cells transfected with RC200271 using transfection reagent MegaTran 2.0 (Cat# [TT210002]).