

Product datasheet for RC200269

PISD (NM_014338) Human Tagged ORF Clone

Product data:

Product Type:	Expression Plasmids
Product Name:	PISD (NM_014338) Human Tagged ORF Clone
Tag:	Myc-DDK
Symbol:	PISD
Synonyms:	DJ858B16; dj858B16.2; LIBF; PSD; PSDC; PSSC
Mammalian Cell Selection:	Neomycin
Vector:	pCMV6-Entry (PS100001)
E. coli Selection:	Kanamycin (25 ug/mL)
ORF Nucleotide Sequence:	>RC200269 representing NM_014338 Red=Cloning site Blue=ORF Green=Tags(s)

TTTTGTAATACGACTCACTATAGGGCGGCCGGAATTCGTCGACTGGATCCGGTACCGAGGAGATCTGCC
GCC**CGATCGCC**

ATGATGTGTCAAGTCAAGGGCGGCAAGGACCAGAGCTCCGCGCGCGAAATGGTTGCACTTCCCCAGC
TGGCCCTGAGGCGGAGGCTGGGGCAGCTGAGCTGCATGTCAGACCCGCTCTGAAACTGCGCTCTGGCC
CTTGACCGTCTCTACTACCTCTGCCCTTCGGCGCCCTCAGACCGCTCAGCCGGGTGGGATGGAGGCC
GTAAGCAGGGTGGCTTTGTACAAGTCAGTGCCAACGCGCTTGCTGTCACGGGCTGGGGTGCCTCAATC
AGGTGGAGCTGCCACACTGGCTGCGCAGGCCCGTCTACAGCCTGTACATCTGGACGTTTGGGGTGAACAT
GAAAGAGGCCGCTGTGGAGGACCTGCATCACTACCGCAACCTCAGCGAGTTCTTCCGGCGCAAGCTGAAG
CCGAGGCCCGGCTGTCTGTGGCTGCACAGCGTGATTAGCCCATCGGATGGAAGGATCCCAACTTTG
GGCAGGTGAAGAAGTGTGAGGTGGAGCAGGTAAGGGGGTCACTACTCCCTGGAGTCGTTCTGGGCC
CGGTATGTGCACAGAGGACCTGCCCTTCCCACAGCCGCGTGTGTGACTCCTTCAAGAACCAGCTGGTC
ACCCGGGAAGGGAATGAGCTCTACTGTGTCTACTTGGCCCTGGGGACTACCACTGCTTCCACT
CCCCACCGACTGGACTGTGCCACCGGCGCCACTTCCCAGGCTCCCTGATGTCAGTGAACCTGGCAT
GGCTCGCTGGATCAAAGAGCTCTTCTGCCATAACGAGCGGGTGGTCTGACGGGGACTGGAAACATGGC
TTCTTCTCACTGACAGCTGTGGGGGCCACCAACGTGGGCTCCATTGCGATCTACTTTGACCGGGACCTGC
ACACAAACAGCCCAAGGCACAGCAAGGGCTCCTACAATGACTTCACTTGTGACGCACACCAATAGAGA
GGGCGTCCCATGCGTAAGGGCGAGCACCTGGGCGAGTTCAACCTGGGCTCCACCATCGTCTCATCTTC
GAGGCCCAAGGACTTCAATTTCCAGCTGAAAACAGGACAGAAAATCCGCTTTGGGGAAGCCCTGGGCT
CGCTC

ACGCGTACGCGGCCGCTCGAGCAGAAACTCATCTCAGAAGAGGATCTGGCAGCAATGATATCCTGGATT
ACAAGGATGACGACGATAAGGTTTAA



[View online >](#)

Protein Sequence: >RC200269 representing NM_014338
 Red=Cloning site Green=Tags(s)

MMCQSEARQGPELRAAKWLHFPQLALRRRLGQLSCMSRPALKLRSWPLTVLYLLPFGALRPLSRVGWRP
 VSRVALYKSVPTLLSRAWGRLNQVELPHWLRRPVYSLYIWTFGVNMKEAAVEDLHHRNLSEFFRRKLLK
 PQARPVCGLHSVISPSDGRILNFGQVKNCEVEQVKGVTSLESFLGPRMCTEDLPFPPAASCDSFKNLV
 TREGNELYHCVIYLAPGDYHCFHSPDWTVSHRRHFPGSLMSVNPGMARWIKELFCHNERVVLTDWKHG
 FFSLTAVGATNVGSIIRIYFDRDLHTNSPRHSGSYNDFSFVTHTNREGVPMRKGEHLGEFNLGSTIVLIF
 EAPKDFNFQLKTGQKIRFGEALGSL

TRTRPLEQKLISEEDLAANDILDYKDDDDKV

Chromatograms: https://cdn.origene.com/chromatograms/ja1796_f09.zip

Restriction Sites: SgfI-MluI

Cloning Scheme:



ACCN: NM_014338

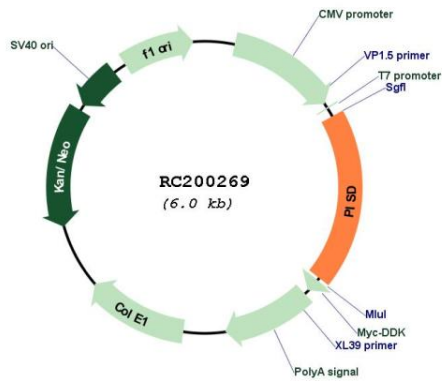
ORF Size: 1125 bp

OTI Disclaimer: Due to the inherent nature of this plasmid, standard methods to replicate additional amounts of DNA in E. coli are highly likely to result in mutations and/or rearrangements. Therefore, OriGene does not guarantee the capability to replicate this plasmid DNA. Additional amounts of DNA can be purchased from OriGene with batch-specific, full-sequence verification at a reduced cost. Please contact our customer care team at custsupport@origene.com or by calling 301.340.3188 option 3 for pricing and delivery.

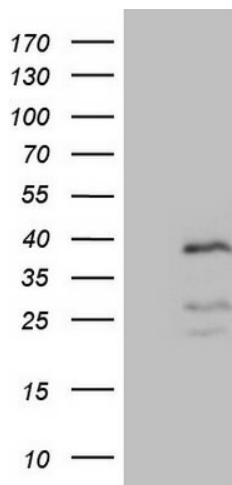
The molecular sequence of this clone aligns with the gene accession number as a point of reference only. However, individual transcript sequences of the same gene can differ through naturally occurring variations (e.g. polymorphisms), each with its own valid existence. This clone is substantially in agreement with the reference, but a complete review of all prevailing variants is recommended prior to use. [More info](#)

OTI Annotation:	This clone was engineered to express the complete ORF with an expression tag. Expression varies depending on the nature of the gene.
Components:	The ORF clone is ion-exchange column purified and shipped in a 2D barcoded Matrix tube containing 10ug of transfection-ready, dried plasmid DNA (reconstitute with 100 ul of water).
Reconstitution Method:	<ol style="list-style-type: none">1. Centrifuge at 5,000xg for 5min.2. Carefully open the tube and add 100ul of sterile water to dissolve the DNA.3. Close the tube and incubate for 10 minutes at room temperature.4. Briefly vortex the tube and then do a quick spin (less than 5000xg) to concentrate the liquid at the bottom.5. Store the suspended plasmid at -20°C. The DNA is stable for at least one year from date of shipping when stored at -20°C.
RefSeq:	NM_014338.3 , NP_055153.1
RefSeq Size:	2693 bp
RefSeq ORF:	1128 bp
Locus ID:	23761
UniProt ID:	Q9UG56
Cytogenetics:	22q12.2
Domains:	PS_Dcarboxylase
Protein Pathways:	Glycerophospholipid metabolism, Metabolic pathways
MW:	42.9 kDa
Gene Summary:	The protein encoded by this gene catalyzes the conversion of phosphatidylserine to phosphatidylethanolamine in the inner mitochondrial membrane. The encoded protein is active in phospholipid metabolism and interorganelle trafficking of phosphatidylserine. [provided by RefSeq, May 2016]

Product images:



Circular map for RC200269



HEK293T cells were transfected with the pCMV6-ENTRY control (Cat# [PS100001], Left lane) or pCMV6-ENTRY PISD (Cat# RC200269, Right lane) cDNA for 48 hrs and lysed. Equivalent amounts of cell lysates (5 ug per lane) were separated by SDS-PAGE and immunoblotted with anti-PISD (Cat# [TA807336])(1:2000).