

Product datasheet for **RC200268**

Annexin A10 (ANXA10) (NM_007193) Human Tagged ORF Clone

Product data:

Product Type:	Expression Plasmids
Product Name:	Annexin A10 (ANXA10) (NM_007193) Human Tagged ORF Clone
Tag:	Myc-DDK
Symbol:	Annexin A10
Synonyms:	ANX14
Mammalian Cell Selection:	Neomycin
Vector:	pCMV6-Entry (PS100001)
E. coli Selection:	Kanamycin (25 ug/mL)
ORF Nucleotide Sequence:	>RC200268 ORF sequence Red=Cloning site Blue=ORF Green=Tags(s)

TTTTGTAATACGACTCACTATAGGGCGCCGGGAATTCGTCGACTGGATCCGGTACCGAGGAGATCTGCC
GCC**CGGATCGCC**

ATGTTTTGTGGAGACTATGTGCAAGGAACCATCTCCAGCTCCCAATTTCAATCCATAATGGATGCC
AAATGCTAGGAGGAGCACTCCAAGGATTTGACTGTGACAAAGACATGCTGATCAACATTCTGACTCAGCG
CTGCAATGCACAAAGGATGATGATTGCAGAGGCATACCAGAGCATGTATGGCCGGGACCTGATTGGGGAT
ATGAGGGAGCAGCTTTCCGATCACTTCAAAGATGTGATGGCTGGCCTCATGTACCCACCACCACTGTATG
ATGCTCATGAGCTCTGGCATGCCATGAAGGGAGTAGGCACTGATGAGAATTGCCTCATTGAAATACTAGC
TTCAAGAACAATGGAGAAATTTCCAGATGCGAGAAGCCTACTGCTTGAATACAGCAATAACCTCCAA
GAGGACATTTATTCAGAGACCTCAGGACACTTCAGAGATACTCTCATGAATTGGTCCAGGGGACCAGAG
AGGAAGGATATACAGACCCTGCGATGGCTGCTCAGGATGCAATGGTCTATGGGAAGCCTGTCAGCAGAA
GACGGGGAGCACAAAACCATGCTGCAAAATGATCCTGTGCAACAAGAGCTACCAGCAGCTGCGGCTGGTT
TTCCAGGAATTTCAAATATTTCTGGGCAAGATATGGTAGATGCCATTAATGAATGTTATGATGGATACT
TTCAGGAGCTGCTGGTTGCAATTGTTCTCTGTGTTGAGACAAACCAGCCTATTTTGCTTATAGATTATA
TAGTGAATTCATGACTTTGGTTCCATAATAAACTGTAATCAGGATTCTCATTGCCAGAAGTGAATA
GACCTGCTGACCATAAGGAAACGATACAAGAGCGATATGGAAAATCCCTATTTTCATGATATCAGAAAT
TTGCTTCAGGGCATTATAAGAAAAGCACTGCTTGCCATCTGTGCTGGTGATGCTGAGGACTAC

ACGCGTACGCGGCCGCTCGAGCAGAAACTCATCTCAGAAGAGGATCTGGCAGCAATGATATCCTGGATT
ACAAGGATGACGACGATAAGGTTTAA



[View online »](#)

Protein Sequence: >RC200268 protein sequence
Red=Cloning site Green=Tags(s)

MFCGDYVQGTIFPAPNFPIMDAQMLGGALQGFCDKDMLINILTQRCNAQRMMIAEAYQSMYGRDLIGD
MREQLSDHFKDVMAGLMYPPPLYDAHELWHAMKGVGTDENCLIEILASRTNGEIFQMREAYCLQYSNNLQ
EDIYSETSGHFRDTLMNLVQGTREEGYTDPAMAAQDAMVLWEACQKQTGEHKTMLQMILCNKSYQLRLV
FQEFQNI SGQDMVDAINECYDGYFQELLVAIVLCVRDKPAYFAYRLYSAIHDFGFHNKTVIRILIAARSEI
DLLTIRKRYKERYGKSLFHDIRNFASGHYKALLAICAGDAEDY

TRTRPLEQKLISEEDLAANDILDYKDDDDKV

Chromatograms: https://cdn.origene.com/chromatograms/mk6075_e06.zip

Restriction Sites: SgfI-MluI

Cloning Scheme:

Cloning sites used for ORF Shuttling:



* The last codon before the Stop codon of the ORF

ACCN: NM_007193

ORF Size: 972 bp

OTI Disclaimer: The molecular sequence of this clone aligns with the gene accession number as a point of reference only. However, individual transcript sequences of the same gene can differ through naturally occurring variations (e.g. polymorphisms), each with its own valid existence. This clone is substantially in agreement with the reference, but a complete review of all prevailing variants is recommended prior to use. [More info](#)

OTI Annotation: This clone was engineered to express the complete ORF with an expression tag. Expression varies depending on the nature of the gene.

Components: The ORF clone is ion-exchange column purified and shipped in a 2D barcoded Matrix tube containing 10ug of transfection-ready, dried plasmid DNA (reconstitute with 100 ul of water).

Reconstitution Method:

1. Centrifuge at 5,000xg for 5min.
2. Carefully open the tube and add 100ul of sterile water to dissolve the DNA.
3. Close the tube and incubate for 10 minutes at room temperature.
4. Briefly vortex the tube and then do a quick spin (less than 5000xg) to concentrate the liquid at the bottom.
5. Store the suspended plasmid at -20°C. The DNA is stable for at least one year from date of shipping when stored at -20°C.

Note: Plasmids are not sterile. For experiments where strict sterility is required, filtration with 0.22um filter is required.

RefSeq: [NM_007193.5](#)

RefSeq Size: 1447 bp

RefSeq ORF: 975 bp

Locus ID: 11199

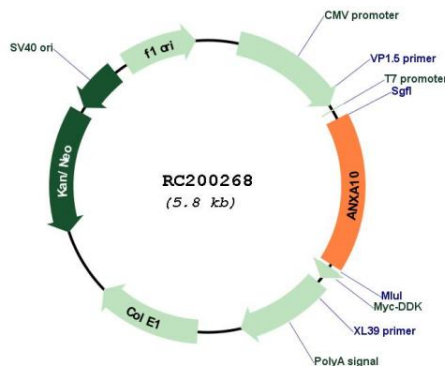
UniProt ID: [Q9UJ72](#)

Cytogenetics: 4q32.3

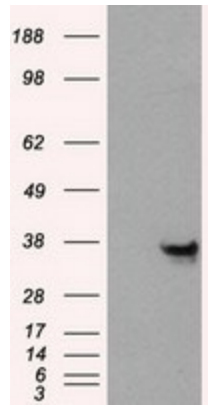
MW: 37.3 kDa

Gene Summary: This gene encodes a member of the annexin family. Members of this calcium-dependent phospholipid-binding protein family play a role in the regulation of cellular growth and in signal transduction pathways. The function of this gene has not yet been determined. [provided by RefSeq, Jul 2008]

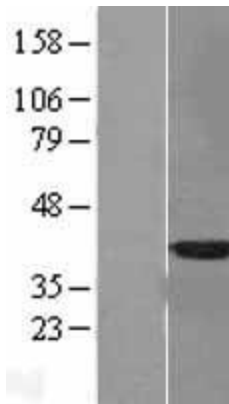
Product images:



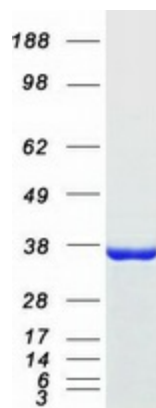
Circular map for RC200268



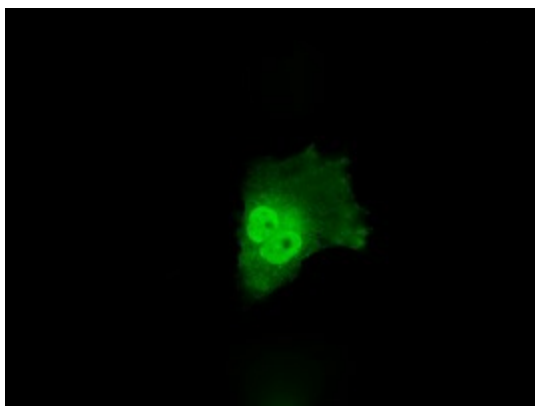
HEK293T cells were transfected with the pCMV6-ENTRY control (Cat# [PS100001], Left lane) or pCMV6-ENTRY ANXA10 (Cat# RC200268, Right lane) cDNA for 48 hrs and lysed. Equivalent amounts of cell lysates (5 ug per lane) were separated by SDS-PAGE and immunoblotted with anti-ANXA10 (Cat# [TA500882]). Positive lysates [LY402103] (100ug) and [LC402103] (20ug) can be purchased separately from OriGene.



Western blot validation of overexpression lysate (Cat# [LY402103]) using anti-DDK antibody (Cat# [TA50011-100]). Left: Cell lysates from untransfected HEK293T cells; Right: Cell lysates from HEK293T cells transfected with RC200268 using transfection reagent MegaTran 2.0 (Cat# [TT210002]).



Coomassie blue staining of purified ANXA10 protein (Cat# [TP300268]). The protein was produced from HEK293T cells transfected with ANXA10 cDNA clone (Cat# RC200268) using MegaTran 2.0 (Cat# [TT210002]).



Anti-ANXA10 mouse monoclonal antibody ([TA500882]) immunofluorescent staining of COS7 cells transiently transfected by pCMV6-ENTRY ANXA10 (RC200268).