

Product datasheet for **RC200262**

SCAMP2 (NM_005697) Human Tagged ORF Clone

Product data:

Product Type:	Expression Plasmids
Product Name:	SCAMP2 (NM_005697) Human Tagged ORF Clone
Tag:	Myc-DDK
Symbol:	SCAMP2
Mammalian Cell Selection:	Neomycin
Vector:	pCMV6-Entry (PS100001)
E. coli Selection:	Kanamycin (25 ug/mL)
ORF Nucleotide Sequence:	>RC200262 ORF sequence Red=Cloning site Blue=ORF Green=Tags(s)

TTTTGTAATACGACTCACTATAGGGCGGCCGGGAATTCGTCGACTGGATCCGGTACCGAGGAGATCTGCC
GCC**CGATCGCC**

ATGTCGGCTTTCGACACCAACCCCTTCGCGGACCCAGTGGATGTAACCCCTTCCAGGATCCCTCTGTGA
CCCAGCTGACCAACGCCCCGAGGGCGGCCTGGCGGAATCAACCCCTTCTCAGAGACAAATGCAGCGAC
AACAGTTCTGTACCCAACTCCCTGGGTCTCACAGCCAGCGGTTCTCCAGCCATCAGTGAACCAACC
CAGCCGACCCCCAGGCCGTGGTGTCTGCAGCCAGGCAGGCTGCTCCGGCAGCAGGAAGAATGGACA
GGAAAGCTGCCGAGCTGGAACGCAAGGAGCGGGAGCTGCAGAACACTGTAGCCAACTTGCATGTGAGACA
GAACAACCTGGCCCCCTCTGCCCTCGTGGTGCCCTGTGAAGCCCTGCTTCTATCAGGATTTCTCCACAGAG
ATCCCTGCCGACTACCAGCGGATATGCAAGATGCTCTACTATCTGTGGATGTTGCATTTCAGTGACTCTGT
TTCTGAACCTGCTTGCCTGCCTGGCCTGGTTCGCGGCAACAGCTCCAAGGGAGTGGACTTTGGCCTCTC
CATCCTGTGGTTTCTGATCTTCACTCCCTGTGCCTTCTTTGTTGGTACCGACCCATCTATAAGGCCTTT
AGGTCCGACAACTCTTTCAGTCTTTGTGTTCTTCTTTGATTTTTTTGTCAAATAGGGATCTACATCA
TCCAGTTGGTTGGCATCCCTGGCCTGGGGACAGCGGTTGGATTGCAGCCCTGTCTACACTGGATAATCA
TTCCCTGGCCATATCAGTCATCATGATGGTGGTGGCTGGCTTCTTCAACCCTGTGCGCGTCTCAGTC
TTCTCCTGCAGCGGGTGCCTCCTTACCGACGGACAGGGCCAGCTTCCAGCAGGCCAGGAGGAGT
TTCCAGGGCATCTTACGACGAGAACCTTCCACAGAGCTGCTTCATCTGCTGCCCAAGGAGCCTTCCA
GGGAAT

ACGCGTACGCGGCCGCTCGAGCAGAACTCATCTCAGAAGAGGATCTGGCAGCAAATGATATCCTGGATT
ACAAGGATGACGACGATAAGGTTTAA



[View online »](#)

Protein Sequence: >RC200262 protein sequence
Red=Cloning site Green=Tags(s)

MSAFDTNPFADPVDVNPFDPSVTQLTNAPOGGLAEFNPSETNAATTVPVTQLPGSSQPAVLQPSVEPT
 QPTPQAVVSAQAAGLLRQQEELDRKAAELERKERELQNTVANLHVRQNNWPPLPSWCPVKPCFYQDFSTE
 IPADYQRICKMLYYLWMLHSVTLFLNLLACLAWFSGNSSKGVDFGLSILWFLIFTPCAFLCWYRPIYKAF
 RSDNSFSFFVFFVFFCQIGIYIIQLVGIPGLGDSGWIAALSTLDNHSLAISVIMMVVAGFFTLCAVLSV
 FLLQRVHSLYRRTGASFQQAQEEFSQGISSRTFHRAASSAAQGAFFQGN

TRTRPLEQKLISEEDLAANDILDYKDDDDKV

Chromatograms: https://cdn.origene.com/chromatograms/mk6241_d10.zip

Restriction Sites: SgfI-MluI

Cloning Scheme:

Cloning sites used for ORF Shuttling:



* The last codon before the Stop codon of the ORF

ACCN: NM_005697

ORF Size: 987 bp

OTI Disclaimer: The molecular sequence of this clone aligns with the gene accession number as a point of reference only. However, individual transcript sequences of the same gene can differ through naturally occurring variations (e.g. polymorphisms), each with its own valid existence. This clone is substantially in agreement with the reference, but a complete review of all prevailing variants is recommended prior to use. [More info](#)

OTI Annotation: This clone was engineered to express the complete ORF with an expression tag. Expression varies depending on the nature of the gene.

Components: The ORF clone is ion-exchange column purified and shipped in a 2D barcoded Matrix tube containing 10ug of transfection-ready, dried plasmid DNA (reconstitute with 100 ul of water).

Reconstitution Method:

1. Centrifuge at 5,000xg for 5min.
2. Carefully open the tube and add 100ul of sterile water to dissolve the DNA.
3. Close the tube and incubate for 10 minutes at room temperature.
4. Briefly vortex the tube and then do a quick spin (less than 5000xg) to concentrate the liquid at the bottom.
5. Store the suspended plasmid at -20°C. The DNA is stable for at least one year from date of shipping when stored at -20°C.

Note: Plasmids are not sterile. For experiments where strict sterility is required, filtration with 0.22um filter is required.

RefSeq: [NM_005697.5](#)

RefSeq Size: 1313 bp

RefSeq ORF: 990 bp

Locus ID: 10066

UniProt ID: [O15127](#)

Cytogenetics: 15q24.1

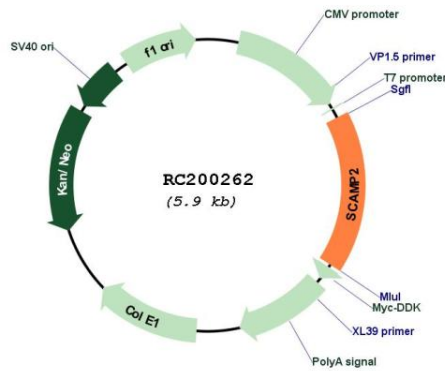
Domains: SCAMP

Protein Families: Transmembrane

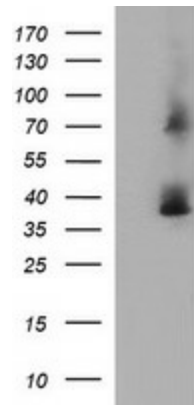
MW: 36.6 kDa

Gene Summary: This gene product belongs to the SCAMP family of proteins which are secretory carrier membrane proteins. They function as carriers to the cell surface in post-golgi recycling pathways. Different family members are highly related products of distinct genes, and are usually expressed together. These findings suggest that the SCAMPs may function at the same site during vesicular transport rather than in separate pathways. Alternate splicing results in multiple transcript variants. [provided by RefSeq, Mar 2016]

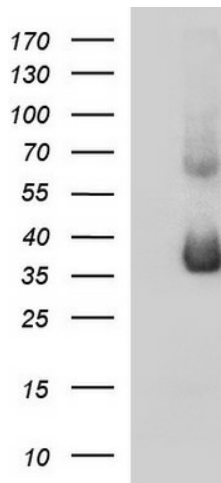
Product images:



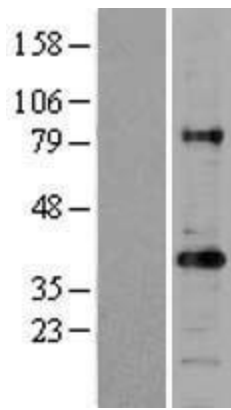
Circular map for RC200262



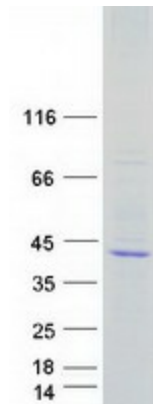
HEK293T cells were transfected with the pCMV6-ENTRY control (Cat# [PS100001], Left lane) or pCMV6-ENTRY SCAMP2 (Cat# RC200262, Right lane) cDNA for 48 hrs and lysed. Equivalent amounts of cell lysates (5 ug per lane) were separated by SDS-PAGE and immunoblotted with anti-SCAMP2(Cat# [TA506991]). Positive lysates [LY417127] (100ug) and [LC417127] (20ug) can be purchased separately from OriGene.



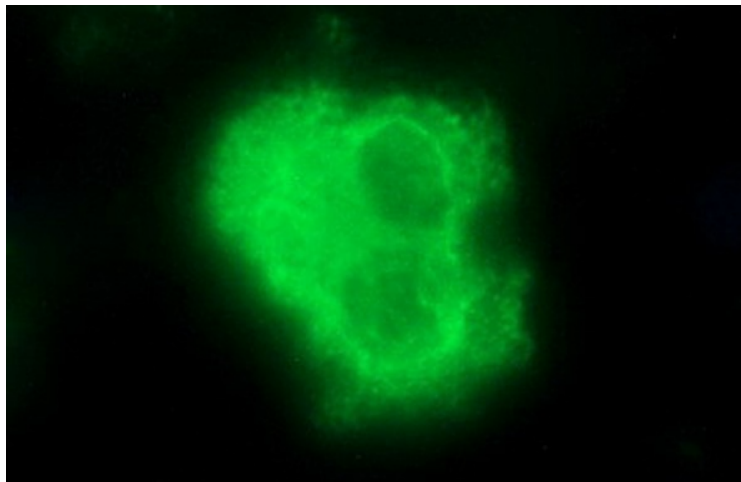
HEK293T cells were transfected with the pCMV6-ENTRY control (Left lane) or pCMV6-ENTRY SCAMP2 (RC200262, Right lane) cDNA for 48 hrs and lysed. Equivalent amounts of cell lysates (5 ug per lane) were separated by SDS-PAGE and immunoblotted with anti-SCAMP2 ([TA506992]). Positive lysates [LY417127] (100ug) and [LC417127] (20ug) can be purchased separately from OriGene.



Western blot validation of overexpression lysate (Cat# [LY417127]) using anti-DDK antibody (Cat# [TA50011-100]). Left: Cell lysates from untransfected HEK293T cells; Right: Cell lysates from HEK293T cells transfected with RC200262 using transfection reagent MegaTran 2.0 (Cat# [TT210002]).



Coomassie blue staining of purified SCAMP2 protein (Cat# [TP300262]). The protein was produced from HEK293T cells transfected with SCAMP2 cDNA clone (Cat# RC200262) using MegaTran 2.0 (Cat# [TT210002]).



Anti-SCAMP2 mouse monoclonal antibody ([TA506992]) immunofluorescent staining of COS7 cells transiently transfected by pCMV6-ENTRY SCAMP2 (RC200262).