

Product datasheet for **RC200260**

YKT6 (NM_006555) Human Tagged ORF Clone

Product data:

Product Type: Expression Plasmids
Product Name: YKT6 (NM_006555) Human Tagged ORF Clone
Tag: Myc-DDK
Symbol: YKT6
Mammalian Cell Selection: Neomycin
Vector: pCMV6-Entry (PS100001)
E. coli Selection: Kanamycin (25 ug/mL)
ORF Nucleotide Sequence: >RC200260 ORF sequence
 Red=Cloning site Blue=ORF Green=Tags(s)

TTTTGTAATACGACTCACTATAGGGCGGCCGGAATTCGTCGACTGGATCCGGTACCGAGGAGATCTGCC
 GCC**CGATCGCC**

ATGAAGCTGTACAGCCTCAGCGTCTCTACAAAGGCGAGGCCAAGGTGGTGTCTCAAAGCCGCATACG
 ATGTGTCTTCCTTCAGCTTTTCCAGAGATCCAGCGTTCAGGAATTCATGACCTTCACGAGTCAACTGAT
 TGTGGAGCGCTCATCGAAAGGCACTAGAGCTTCTGTCAAAGAACAAGACTATCTGTGCCACGTCTACGTC
 CGGAATGATAGTCTTGCAGGTGTGGTCATTGCTGACAATGAATACCCATCCCGGGTGGCCTTTACCTTGC
 TGGAGAAGTACTAGATGAATTCTCAAGCAAGTCGACAGGATAGACTGGCCAGTAGGATCCCCTGCTAC
 AATCCATTACCCAGCCCTGGATGGTCACCTCAGTAGATACCAGAACCACGAGAAGCTGATCCCATGACT
 AAAGTGCAGGCCGAAGTACTAGATGAGACAAAATCATTCTGCACAACACCATGGAGTCTCTGTAGAGCGAG
 GTGAGAAGCTAGATGACTTGGTGTCCAAATCCGAGGTGCTGGGAACACAGTCTAAAGCCTTCTATAAAAC
 TGCCCGAAACAAAACACTCATGCTGTGCCATCATG

ACGCGTACGCGGCCGCTCGAGCAGAAACTCATCTCAGAAGAGGATCTGGCAGCAAATGATATCCTGGATT
 ACAAGGATGACGACGATAAGGTTTAA

Protein Sequence: >RC200260 protein sequence
 Red=Cloning site Green=Tags(s)

MKLYSLSVLYKGEAKVLLKAAVDVSSFSFFQRSSVQEFMTFTSQLIVERSSKGTRASVKEQDYLVCHVYV
 RNDLAGVVIADNEYPSRVAFTLLEKVLDEFKQVDRIDWPVGSPTAIHYPALDGHLSRYQNPREADPMT
 KVQAELETKIILHNTMESLLERGEKLDLVSSEVLGTQSKAFYKTARKQNSCCAIM

TRTRPLEQKLISEEDLAANDILDYKDDDDKV

Chromatograms: https://cdn.origene.com/chromatograms/mk6381_g04.zip



[View online »](#)

Restriction Sites: SgfI-MluI

Cloning Scheme:



ACCN: NM_006555

ORF Size: 594 bp

OTI Disclaimer: The molecular sequence of this clone aligns with the gene accession number as a point of reference only. However, individual transcript sequences of the same gene can differ through naturally occurring variations (e.g. polymorphisms), each with its own valid existence. This clone is substantially in agreement with the reference, but a complete review of all prevailing variants is recommended prior to use. [More info](#)

OTI Annotation: This clone was engineered to express the complete ORF with an expression tag. Expression varies depending on the nature of the gene.

Components: The ORF clone is ion-exchange column purified and shipped in a 2D barcoded Matrix tube containing 10ug of transfection-ready, dried plasmid DNA (reconstitute with 100 ul of water).

Reconstitution Method:

1. Centrifuge at 5,000xg for 5min.
2. Carefully open the tube and add 100ul of sterile water to dissolve the DNA.
3. Close the tube and incubate for 10 minutes at room temperature.
4. Briefly vortex the tube and then do a quick spin (less than 5000xg) to concentrate the liquid at the bottom.
5. Store the suspended plasmid at -20°C. The DNA is stable for at least one year from date of shipping when stored at -20°C.

RefSeq: [NM_006555.4](#)

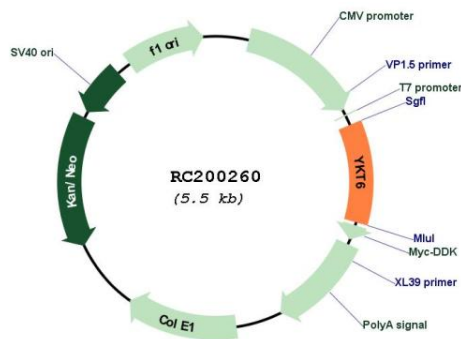
RefSeq Size: 2783 bp

RefSeq ORF: 597 bp

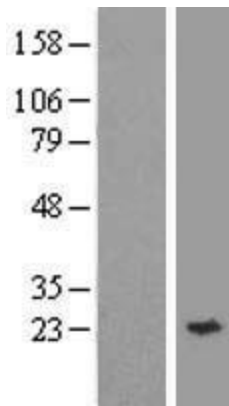
Locus ID: 10652

UniProt ID: [O15498](#)

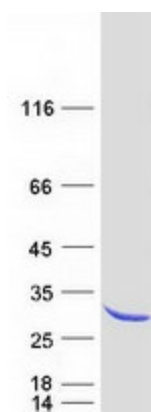
Cytogenetics:	7p13
Domains:	synaptobrevin
Protein Pathways:	SNARE interactions in vesicular transport
MW:	22.4 kDa
Gene Summary:	This gene product is one of the SNARE recognition molecules implicated in vesicular transport between secretory compartments. It is a membrane associated, isoprenylated protein that functions at the endoplasmic reticulum-Golgi transport step. This protein is highly conserved from yeast to human and can functionally complement the loss of the yeast homolog in the yeast secretory pathway. [provided by RefSeq, Jul 2008]

Product images:


Circular map for RC200260



Western blot validation of overexpression lysate (Cat# [LY416570]) using anti-DDK antibody (Cat# [TA50011-100]). Left: Cell lysates from untransfected HEK293T cells; Right: Cell lysates from HEK293T cells transfected with RC200260 using transfection reagent MegaTran 2.0 (Cat# [TT210002]).



Coomassie blue staining of purified YKT6 protein (Cat# [TP300260]). The protein was produced from HEK293T cells transfected with YKT6 cDNA clone (Cat# RC200260) using MegaTran 2.0 (Cat# [TT210002]).