

Product datasheet for **RC200258**

B4GALT7 (NM_007255) Human Tagged ORF Clone

Product data:

Product Type:	Expression Plasmids
Product Name:	B4GALT7 (NM_007255) Human Tagged ORF Clone
Tag:	Myc-DDK
Symbol:	B4GALT7
Synonyms:	EDSP1; EDSSLA; EDSSPD1; XGALT1; XGPT; XGPT1
Vector:	pCMV6-Entry (PS100001)
E. coli Selection:	Kanamycin (25 ug/mL)
Cell Selection:	Neomycin
ORF Nucleotide Sequence:	>RC200258 ORF sequence Red=Cloning site Blue=ORF Green=Tags(s)

TTTTGTAATACGACTCACTATAGGGCGGCCGGAATTCGTCGACTGGATCCGGTACCGAGGAGATCTGCC
GCC**CGGATCGCC**

ATGTTCCCTCGCGGAGGAAAGCGGCGCAGCTGCCCTGGGAGGACGGCAGGTCCGGGTGCTCTCCGGCG
GCCTCCCTCGGAAGTGTCCGTCTCCACCTGTCGTCGGCCTGCCTCTCGCTGGGCTTCTTCCCTACT
CTGGCTGCAGCTCAGCTGCTCTGGGACGTGGCCCGGCAGTCAGGGGACAAGGGCAGGAGACCTCGGGC
CCTCCCCGCGCCTGCCCCAGAGCCGCCCTGAGCACTGGGAAGAAGACGCATCCTGGGGCCCCACC
GCCTGGCAGTGTGGTGCCTTCCGCGAACGCTTCGAGGAGCTCCTGGTCTTCGTGCCCCACATGCGCCG
CTTCTGAGCAGGAAGAAGATCCGGCACCACATCTACGTGCTCAACCAGGTGGACCACTTCAGGTTCAAC
CGGGCAGCGCTCATCAACGTGGGCTTCTGGAGAGCAGCAACAGCACGGACTACATTGCCATGCACGACG
TTGACCTGCTCCCTCTCAACGAGGAGCTGGACTATGGCTTTCCTGAGGCTGGGCCCTTCCACGTGGCCTC
CCCGGAGCTCCACCCTCTACCACTACAAGACCTATGTCGGCGGCATCCTGCTGCTCTCCAAGCAGCAC
TACCGGCTGTGCAATGGGATGTCCAACCGCTTCTGGGGCTGGGGCCGCGAGGACGACGAGTCTACCGGC
GCATTAAGGGAGCTGGGCTCCAGCTTTCCGCCCTCGGGAATCACAACCTGGGTACAAGACATTTGCCA
CCTGCATGACCCAGCCTGGCGGAAGAGGGACCAGAAGCGCATCGCAGCTCAAAAACAGGACAGTTCAAG
GTGGACAGGGAGGGAGGCTGAACACTGTGAAGTACCATGTGGCTTCCCGCACTGCCCTGTCTGTGGGCG
GGGCCCTCGACTGTCCTCAACATCATGTTGGACTGTGACAAGACCGCCACACCCTGGTGCACATTGAG
C

ACGGTACGGGCCGCTCGAGCAGAACTCATCTCAGAAGAGGATCTGGCAGCAATGATATCCTGGATT
ACAAGGATGACGACGATAAGGTTTAA



[View online »](#)

Protein Sequence: >RC200258 protein sequence
 Red=Cloning site Green=Tags(s)

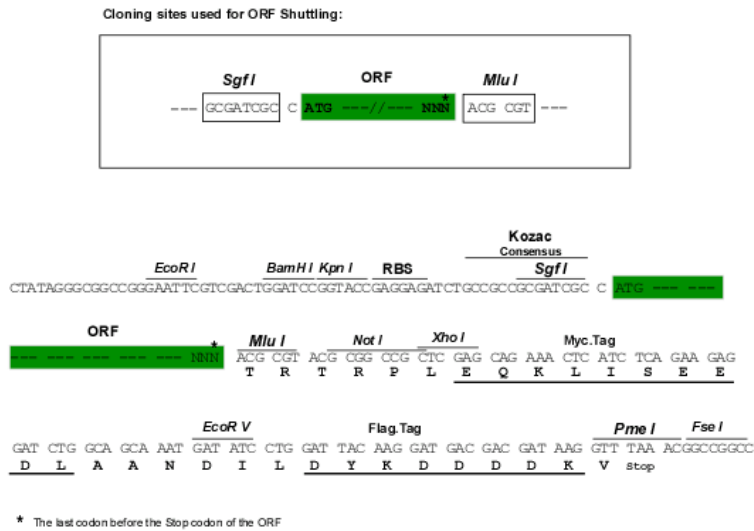
MFPSRRKAAQLPWEDGRSGLLSGGLPRKCSVFHLFVACL SLGFFSLLWLQLSCSGDVARAVRGQGQETSG
 PPRACPPPEPPHWEEDASWGPRLAVLVPFRERFEELLVFVPHMRRFLSRKKIRHHIYVLNQVDHFRFN
 RAALINVGFLLESSNSTDYIAMHDVDLLPLNEELDYGFPEAGPFHVASPELHPLYHKTYVGGILLLSKQH
 YRLCNGMSNRFWGREGREDEFYRRIKAGLQLFRPSGITTYKTFRHLHDPAWRKRDKRIAAQKQEQFK
 VDREGGLNTVKYHVASRTALSVGGAPCTVLNIMLDCDKTATPWCTFS

TRTRPLEQKLISEEDLAANDILDYKDDDDKV

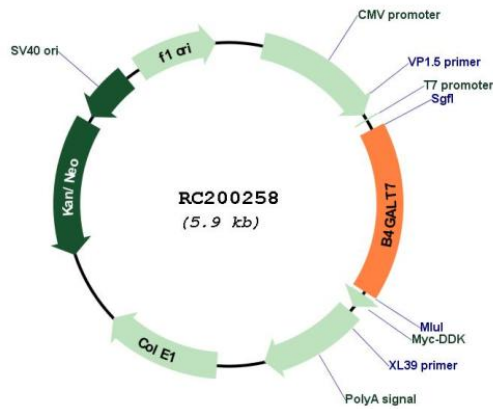
Chromatograms: https://cdn.origene.com/chromatograms/mk6381_a05.zip

Restriction Sites: SgfI-MluI

Cloning Scheme:



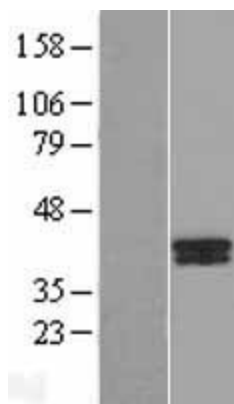
Plasmid Map:



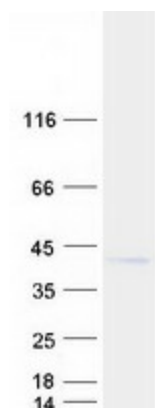
ACCN: NM_007255

ORF Size:	981 bp
OTI Disclaimer:	The molecular sequence of this clone aligns with the gene accession number as a point of reference only. However, individual transcript sequences of the same gene can differ through naturally occurring variations (e.g. polymorphisms), each with its own valid existence. This clone is substantially in agreement with the reference, but a complete review of all prevailing variants is recommended prior to use. More info
OTI Annotation:	This clone was engineered to express the complete ORF with an expression tag. Expression varies depending on the nature of the gene.
RefSeq:	NM_007255.1 , NM_007255.2 , NP_009186.1
RefSeq Size:	1747 bp
RefSeq ORF:	984 bp
Locus ID:	11285
Domains:	Galactosyl_T_2
Protein Families:	Transmembrane
Protein Pathways:	Chondroitin sulfate biosynthesis, Heparan sulfate biosynthesis, Metabolic pathways
MW:	37.4 kDa
Gene Summary:	This gene is a member of the beta-1,4-galactosyltransferase (beta4GalT) family. Family members encode type II membrane-bound glycoproteins that appear to have exclusive specificity for the donor substrate UDP-galactose. Each beta4GalT member has a distinct function in the biosynthesis of different glycoconjugates and saccharide structures. As type II membrane proteins, they have an N-terminal hydrophobic signal sequence that directs the protein to the Golgi apparatus which then remains uncleaved to function as a transmembrane anchor. The enzyme encoded by this gene attaches the first galactose in the common carbohydrate-protein linkage (GlcA-beta1,3-Gal-beta1,3-Gal-beta1,4-Xyl-beta1-O-Ser) found in proteoglycans. This enzyme differs from other beta4GalTs because it lacks the conserved Cys residues found in beta4GalT1-beta4GalT6 and it is located in cis-Golgi instead of trans-Golgi. Mutations in this gene have been associated with the progeroid form of Ehlers-Danlos syndrome. [provided by RefSeq, Oct 2009]

Product images:



Western blot validation of overexpression lysate (Cat# [LY416094]) using anti-DDK antibody (Cat# [TA50011-100]). Left: Cell lysates from untransfected HEK293T cells; Right: Cell lysates from HEK293T cells transfected with RC200258 using transfection reagent MegaTran 2.0 (Cat# [TT210002]).



Coomassie blue staining of purified B4GALT7 protein (Cat# [TP300258]). The protein was produced from HEK293T cells transfected with B4GALT7 cDNA clone (Cat# RC200258) using MegaTran 2.0 (Cat# [TT210002]).