

## Product datasheet for **RC200255**

### TMED1 (NM\_006858) Human Tagged ORF Clone

#### Product data:

Product Type:	Expression Plasmids
Product Name:	TMED1 (NM_006858) Human Tagged ORF Clone
Tag:	Myc-DDK
Symbol:	TMED1
Synonyms:	IL1r1l1; IL1RL1LG; p24g1; Tp24
Mammalian Cell Selection:	Neomycin
Vector:	pCMV6-Entry (PS100001)
E. coli Selection:	Kanamycin (25 ug/mL)
ORF Nucleotide Sequence:	>RC200255 ORF sequence Red=Cloning site Blue=ORF Green=Tags(s)

TTTTGTAATACGACTCACTATAGGGCGGCCGGAATTCGTCGACTGGATCCGGTACCGAGGAGATCTGCC  
GCC**CGATCGCC**

ATGATGGCGGCCGCGGCCCTAGCCCTGGCCTTGTGGCTACTAATGCCACCAGTGGAGGTGGGAGGGG  
CGGGGCCCCGCCAATCCAGGACGGTGAGTTCACGTTCTGTTGCCGGCGGGGAGGAAGCAGTGTTTCTA  
CCAGTCCGCGCCGCCAACGCAAGCCTCGAGACCGAATACCAGGTGATCGGAGGTGCTGGACTGGACGTG  
GACTTCACGCTGGAGAGCCCTCAGGGCGTGTGTTGGTCAGCGAGTCCCGAAGGCTGATGGGGTACACA  
CGGTGGAGCCAACGGAGGCCGGGACTACAAGCTGTGCTTTGACAACCTCTCAGCACCATCTCCGAGAA  
GCTGGTGTCTTTGAACTGATCTTTGACAGCCTCCAGGATGACGAGGAGGTCGAAGGATGGCAGAGGCT  
GTGGAGCCCGAGGAGATGCTGGATGTTAAAATGGAGGACATCAAGGAGTCCATTGAGACCATGCGGACCC  
GGCTGGAGCGCAGCATCCAGATGCTCACGCTACTGCGGGCCTTCGAGGCACGTGACCGCAACCTGCAAGA  
GGGCAACTTGGAGCGGGTCAACTTCTGGTCAGCTGTCAACGTGGCGGTGCTGCTGCTGGTGGCTGTGCTG  
CAGTCTGCACGCTCAAGCGCTTCTCCAGGACAAGCGCCCGGTGCCACG

**ACGCGT**ACGCGGCCGCTCGAGCAGAACTCATCTCAGAAGAGGATCTGGCAGCAATGATATCTGGATT  
ACAAGGATGACGACGATAAGGTTTAA



[View online »](#)

**Protein Sequence:** >RC200255 protein sequence  
Red=Cloning site Green=Tags(s)

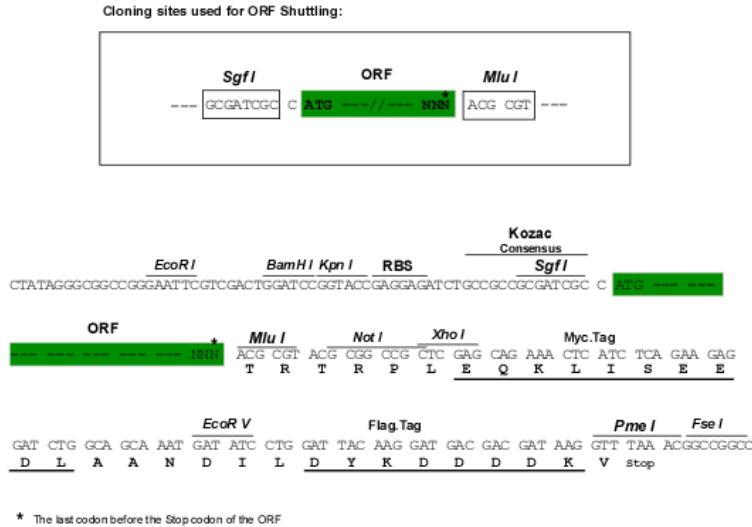
MMAAGAALALALWLLMPPVEVGGAGPPPIQDGEFTLLPAGRKQCFYQSAPANASLETEYQVIGGAGLDV  
 DFTLESPQGVLLVSESRKADGVHTVEPTEAGDYKLCFDFNSFSTISEKLVFFELIFDSLQDDEEVEGWAEA  
 VEPEEMLDVKMEDIKESIETMRRLERSIQMLTLLRAFEARDRNLEQGNLERVNFWSAVNVAVLLLVAVL  
 QVCTLKRFFQDKRPVPT

TRTRPLEQKLISEEDLAANDILDYKDDDDKV

**Chromatograms:** [https://cdn.origene.com/chromatograms/mk6128\\_e01.zip](https://cdn.origene.com/chromatograms/mk6128_e01.zip)

**Restriction Sites:** SgfI-MluI

**Cloning Scheme:**



**ACCN:** NM\_006858

**ORF Size:** 681 bp

**OTI Disclaimer:** The molecular sequence of this clone aligns with the gene accession number as a point of reference only. However, individual transcript sequences of the same gene can differ through naturally occurring variations (e.g. polymorphisms), each with its own valid existence. This clone is substantially in agreement with the reference, but a complete review of all prevailing variants is recommended prior to use. [More info](#)

**OTI Annotation:** This clone was engineered to express the complete ORF with an expression tag. Expression varies depending on the nature of the gene.

**Components:** The ORF clone is ion-exchange column purified and shipped in a 2D barcoded Matrix tube containing 10ug of transfection-ready, dried plasmid DNA (reconstitute with 100 ul of water).

**Reconstitution Method:**

1. Centrifuge at 5,000xg for 5min.
2. Carefully open the tube and add 100ul of sterile water to dissolve the DNA.
3. Close the tube and incubate for 10 minutes at room temperature.
4. Briefly vortex the tube and then do a quick spin (less than 5000xg) to concentrate the liquid at the bottom.
5. Store the suspended plasmid at -20°C. The DNA is stable for at least one year from date of shipping when stored at -20°C.

**RefSeq:** [NM\\_006858.4](#)

**RefSeq Size:** 1739 bp

**RefSeq ORF:** 684 bp

**Locus ID:** 11018

**UniProt ID:** [Q13445](#)

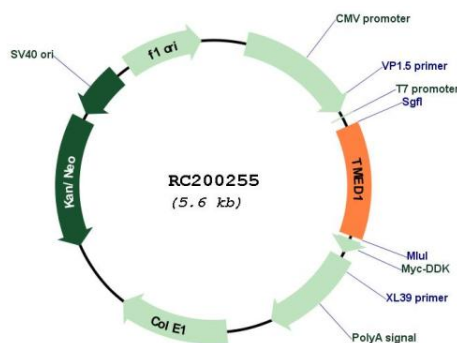
**Cytogenetics:** 19p13.2

**Protein Families:** Druggable Genome, Transmembrane

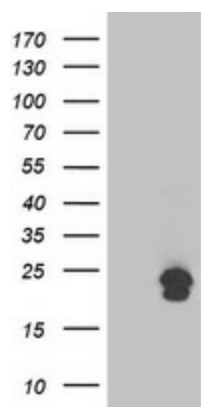
**MW:** 25.2 kDa

**Gene Summary:** This gene belongs to the TMED (transmembrane emp24 domain-containing) protein family, which is involved in the vesicular trafficking of proteins. The protein encoded by this gene was identified by its interaction with interleukin 1 receptor-like 1 (IL1RL1) and may play a role in innate immunity. This protein lacks any similarity to other interleukin 1 ligands. Alternative splicing results in multiple transcript variants of this gene. [provided by RefSeq, Jul 2013]

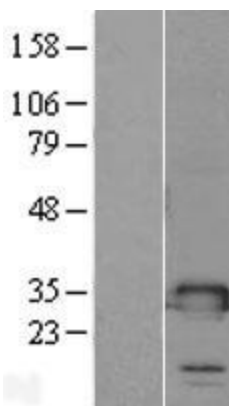
## Product images:



Circular map for RC200255



HEK293T cells were transfected with the pCMV6-ENTRY control (Cat# [PS100001], Left lane) or pCMV6-ENTRY TMED1 (Cat# RC200255, Right lane) cDNA for 48 hrs and lysed. Equivalent amounts of cell lysates (5 ug per lane) were separated by SDS-PAGE and immunoblotted with anti-TMED1 (Cat# [TA503620]). Positive lysates [LY402049] (100ug) and [LC402049] (20ug) can be purchased separately from OriGene.



Western blot validation of overexpression lysate (Cat# [LY402049]) using anti-DDK antibody (Cat# [TA50011-100]). Left: Cell lysates from untransfected HEK293T cells; Right: Cell lysates from HEK293T cells transfected with RC200255 using transfection reagent MegaTran 2.0 (Cat# [TT210002]).