

Product datasheet for RC200250

EBNA1 binding protein 2 (EBNA1BP2) (NM_006824) Human Tagged ORF Clone

Product data:

Product Type:	Expression Plasmids
Product Name:	EBNA1 binding protein 2 (EBNA1BP2) (NM_006824) Human Tagged ORF Clone
Tag:	Myc-DDK
Symbol:	EBNA1 binding protein 2
Synonyms:	EBP2; NOBP; P40
Mammalian Cell Selection:	Neomycin
Vector:	pCMV6-Entry (PS100001)
E. coli Selection:	Kanamycin (25 ug/mL)
ORF Nucleotide Sequence:	>RC200250 ORF sequence Red=Cloning site Blue=ORF Green=Tags(s)

TTTTGTAATACGACTCACTATAGGGCGGCCGGAATTCGTCGACTGGATCCGGTACCGAGGAGATCTGCC
GCC**CGATCGCC**

ATGGACACTCCCCGCTCTCGGATTCGGAGTCGGAATCCGATGAATCCCTTGTCACAGACAGAGAGTTGC
AGGATGCGTTTTCCCGAGGGCTTCTGAAGCCAGGCCTCAATGTCGTGCTAGAGGGCCGAAGAAGGCCGT
GAACGACGTGAATGGCCTGAAGCAATGTTGGCAGAATCAAGCGGGATCTGGAATGGGTTGAAAGGCTC
GATGTGACTGGTCCGGTACCGGAGATCGGTGGATCTGAGGCCAGCACCTCAGAACAAGGACCAGA
AAGCTGTTGATCCAGAAGACGACTTCCAGCGAGAGATGAGTTTCTATCGCAAGCCAGGCCGAGTGT
TGCACTTACCCCGCTCCATCAGCTCAAAGTCCCTACGAAGCGACCCACTGATTATTTGCGGAAATG
GCCAAATCTGATCTGCAGATGCAGAAGATTCGACAGAAGCTGCAGACTAACAGGCTGCCATGGAGAGGT
CTGAAAAAGCTAAGCAACTGCGAGCACTTAGGAAATACGGGAAGAAGGTGCAAACGGAGGTTCTTCAGAA
GAGGCAGCAGGAGAAAGCCCATATGATGAATGCTATTAAGAAATATCAGAAAGGCTTCTCTGATAAACTG
GATTTCTTGAGGGAGATCAGAACTCTGGCACAGCGCAAGAAGGCAGGAGCCAAAGGCCAGCAGATGA
GGAAGGGCCAGTGCTAAACGACGGTAAAAACCAGAAGTTTGGTTTTGGTGGAAAGAAGAAAGGCTC
AAAGTGGAACTCGGGAGAGCTATGATGATGTATCTAGCTTCCGGGCCAAGACAGCTCATGGCAGAGGC
CTCAAGAGGCCTGGCAAGAAAGGTCAAATAAGAGACCTGGAAAACGAACAAGAGAGAAGATGAAGAACA
GAACACAC

ACGCGTACGCGGCCGCTCGAGCAGAACTCATCTCAGAAGAGGATCTGGCAGCAAATGATATCCTGGATT
ACAAGGATGACGACGATAAGGTTTAA



[View online »](#)

Protein Sequence: >RC200250 protein sequence
Red=Cloning site Green=Tags(s)

MDTPPLSDSESESDVLDRELQDAFSRGLLKPGLNVVLEGPVKAVNDVNLKQCLAEFKRDLEWVERL
 DVTLGPVPEIGGSEAPAPQNKDQKAVDPEDDFQREMSFYRQAQAAVLAVLPRHLQKVPTRPTDYFAEM
 AKSDLQMQKIRQKLQTKQAAMERSEKAKQLRALRKYGKKVQTEVLQKRQEQEKAHMNAIKKYQKGFSDKL
 DFLEGDQKPLAQRKKAGAKGQMRKGPSAKRRYKNQKFGFGGKKKGSKWNTRESYDDVSSFRAKTAHGRG
 LKRPGKKGSKRPGKRTREKMKNRTH

TRTRPLEQKLISEEDLAANDILDYKDDDDKV

Chromatograms: https://cdn.origene.com/chromatograms/mk6051_e06.zip

Restriction Sites: SgfI-MluI

Cloning Scheme:



ACCN: NM_006824

ORF Size: 918 bp

OTI Disclaimer: The molecular sequence of this clone aligns with the gene accession number as a point of reference only. However, individual transcript sequences of the same gene can differ through naturally occurring variations (e.g. polymorphisms), each with its own valid existence. This clone is substantially in agreement with the reference, but a complete review of all prevailing variants is recommended prior to use. [More info](#)

OTI Annotation: This clone was engineered to express the complete ORF with an expression tag. Expression varies depending on the nature of the gene.

Components: The ORF clone is ion-exchange column purified and shipped in a 2D barcoded Matrix tube containing 10ug of transfection-ready, dried plasmid DNA (reconstitute with 100 ul of water).

Reconstitution Method:

1. Centrifuge at 5,000xg for 5min.
2. Carefully open the tube and add 100ul of sterile water to dissolve the DNA.
3. Close the tube and incubate for 10 minutes at room temperature.
4. Briefly vortex the tube and then do a quick spin (less than 5000xg) to concentrate the liquid at the bottom.
5. Store the suspended plasmid at -20°C. The DNA is stable for at least one year from date of shipping when stored at -20°C.

RefSeq: [NM_006824.3](#)

RefSeq Size: 1397 bp

RefSeq ORF: 921 bp

Locus ID: 10969

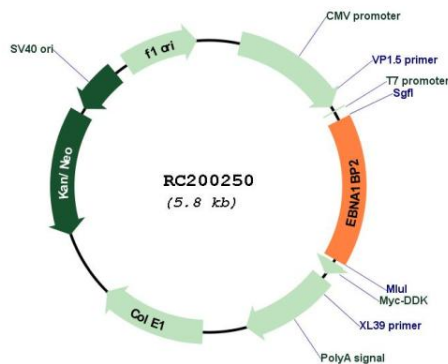
UniProt ID: [Q99848](#)

Cytogenetics: 1p34.2

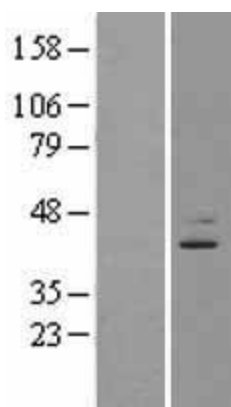
MW: 34.9 kDa

Gene Summary: Required for the processing of the 27S pre-rRNA.[UniProtKB/Swiss-Prot Function]

Product images:



Circular map for RC200250



Western blot validation of overexpression lysate (Cat# [LY402042]) using anti-DDK antibody (Cat# [TA50011-100]). Left: Cell lysates from untransfected HEK293T cells; Right: Cell lysates from HEK293T cells transfected with RC200250 using transfection reagent MegaTran 2.0 (Cat# [TT210002]).