

## Product datasheet for **RC200249**

### **RAB31 (NM\_006868) Human Tagged ORF Clone**

#### Product data:

**Product Type:** Expression Plasmids  
**Product Name:** RAB31 (NM\_006868) Human Tagged ORF Clone  
**Tag:** Myc-DDK  
**Symbol:** RAB31  
**Synonyms:** Rab22B  
**Mammalian Cell Selection:** Neomycin  
**Vector:** pCMV6-Entry (PS100001)  
**E. coli Selection:** Kanamycin (25 ug/mL)  
**ORF Nucleotide Sequence:** >RC200249 ORF sequence  
 Red=Cloning site Blue=ORF Green=Tags(s)

TTTTGTAATACGACTCACTATAGGGCGCCGGGAATTCGTCGACTGGATCCGGTACCGAGGAGATCTGCC  
 GCC**CGATCGCC**

ATGATGGCGATACGGGAGCTCAAAGTGTGCCTTCTCGGGGACACTGGGGTTGGGAAATCAAGCATCGTGT  
 GTCGATTTGTCCAGGATCACTTTGACCACAACATCAGCCCTACTATTGGGCATCTTTTATGACCAAAAC  
 TGTGCCTTGTGGAAATGAACTTCACAAGTTCCTCATCTGGGACACTGCTGGTCAGGAACGGTTTCATTCA  
 TTGGCTCCCATGTACTATCGAGGCTCAGCTGCAGCTGTTATCGTGTATGATATTACCAAGCAGGATTCAT  
 TTTATACCTTGAAGAAATGGGTCAAGGAGCTGAAAGAACATGGTCCAGAAAACATTGTAATGGCCATCGC  
 TGGAAACAAGTGCACCTCTCAGATATTAGGGAGGTTCCCTGAAGGATGCTAAGGAATACGCTGAATCC  
 ATAGGTGCCATCGTGGTTGAGACAAGTGCAAAAAATGCTATTAATATCGAAGAGCTCTTCAAGGAATCA  
 GCCGCCAGATCCCACCCTTGACCCCCATGAAAATGGAACAATGGAACAATCAAAGTTGAGAAGCCAAC  
 CATGCAAGCCAGCCGCGGTGCTGT

**ACGCGT**ACGCGGCCGCTCGAGCAGAACTCATCTCAGAAGAGGATCTGGCAGCAAATGATATCCTGGATT  
 ACAAGGATGACGACGATAAGGTTTAA

**Protein Sequence:** >RC200249 protein sequence  
 Red=Cloning site Green=Tags(s)

MMAIRELKVLLGDTGVGKSSIVCRFVQDHFHDHNSPTIGASFMTKTVPCGNELHKFLIWDTAGQERFHS  
 LAPMYRGSAAAVIYDITKQDSFYTLKKWVKELKEHGPENIVMAIAGNKCDLSDIREVPLKDAKEYAES  
 IGAIVVETSAKNAINIEELFQGISRQIPPLDPHENGNGTIKVEKPTMQASRRCC

**TRTRPLEQKLI**SEEDLAANDILDYKDDDDKV



[View online »](#)

**Chromatograms:** [https://cdn.origene.com/chromatograms/mk6082\\_b05.zip](https://cdn.origene.com/chromatograms/mk6082_b05.zip)

**Restriction Sites:** SgfI-MluI

**Cloning Scheme:**



**ACCN:** NM\_006868

**ORF Size:** 585 bp

**OTI Disclaimer:** The molecular sequence of this clone aligns with the gene accession number as a point of reference only. However, individual transcript sequences of the same gene can differ through naturally occurring variations (e.g. polymorphisms), each with its own valid existence. This clone is substantially in agreement with the reference, but a complete review of all prevailing variants is recommended prior to use. [More info](#)

**OTI Annotation:** This clone was engineered to express the complete ORF with an expression tag. Expression varies depending on the nature of the gene.

**Components:** The ORF clone is ion-exchange column purified and shipped in a 2D barcoded Matrix tube containing 10ug of transfection-ready, dried plasmid DNA (reconstitute with 100 ul of water).

**Reconstitution Method:**

1. Centrifuge at 5,000xg for 5min.
2. Carefully open the tube and add 100ul of sterile water to dissolve the DNA.
3. Close the tube and incubate for 10 minutes at room temperature.
4. Briefly vortex the tube and then do a quick spin (less than 5000xg) to concentrate the liquid at the bottom.
5. Store the suspended plasmid at -20°C. The DNA is stable for at least one year from date of shipping when stored at -20°C.

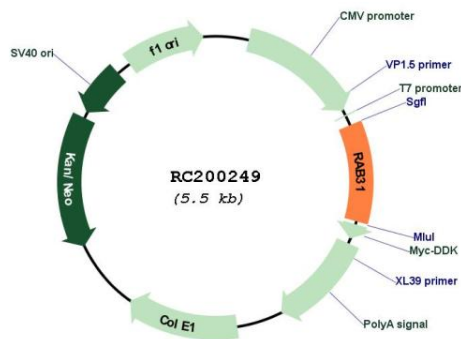
**Note:** Plasmids are not sterile. For experiments where strict sterility is required, filtration with 0.22um filter is required.

**RefSeq:** [NM\\_006868.4](#)

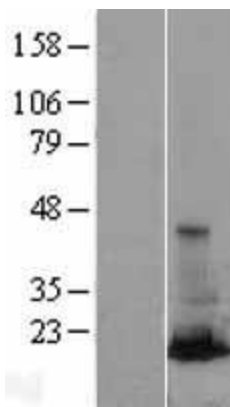
**RefSeq Size:** 4009 bp

RefSeq ORF:	588 bp
Locus ID:	11031
UniProt ID:	<a href="#">Q13636</a>
Cytogenetics:	18p11.22
Domains:	ras, RAN, RAS, RHO, RAB
Protein Families:	Druggable Genome
Protein Pathways:	Endocytosis
MW:	21.7 kDa
Gene Summary:	Small GTP-binding proteins of the RAB family, such as RAB31, play essential roles in vesicle and granule targeting (Bao et al., 2002 [PubMed 11784320]).[supplied by OMIM, Jul 2009]

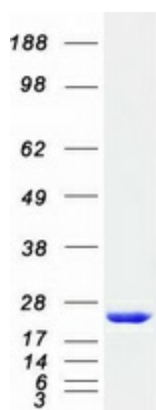
### Product images:



Circular map for RC200249



Western blot validation of overexpression lysate (Cat# [LY402053]) using anti-DDK antibody (Cat# [TA50011-100]). Left: Cell lysates from untransfected HEK293T cells; Right: Cell lysates from HEK293T cells transfected with RC200249 using transfection reagent MegaTran 2.0 (Cat# [TT210002]).



Coomassie blue staining of purified RAB31 protein (Cat# [TP300249]). The protein was produced from HEK293T cells transfected with RAB31 cDNA clone (Cat# RC200249) using MegaTran 2.0 (Cat# [TT210002]).