

## Product datasheet for **RC200248**

### **RBPMS (NM\_001008712) Human Tagged ORF Clone**

#### Product data:

Product Type: Expression Plasmids  
 Product Name: RBPMS (NM\_001008712) Human Tagged ORF Clone  
 Tag: Myc-DDK  
 Symbol: RBPMS  
 Synonyms: HERMES  
 Mammalian Cell Selection: Neomycin  
 Vector: pCMV6-Entry (PS100001)  
 E. coli Selection: Kanamycin (25 ug/mL)  
 ORF Nucleotide Sequence: >RC200248 ORF sequence  
 Red=Cloning site Blue=ORF Green=Tags(s)

TTTTGTAATACGACTCACTATAGGGCGGCCGGAATTCGTCGACTGGATCCGGTACCGAGGAGATCTGCC  
 GCC**CGATCGCC**

ATGAACAACGGCGCAAAGCCGAGAAGGAGAACACCCCGAGCGAGGCCAACCTTCAGGAGGAGGAGTCC  
 GGACCCTATTTGTCAGTGGCCTTCCTCTGGATATCAAACCTCGGGAGCTCTATCTGCTTTTCAGACCATT  
 TAAGGGCTATGAGGGTTCTTTATAAAGCTCACATCTAAACAGCCTGTAGGTTTTGTCAGTTTTGACAGT  
 CGCTCAGAAGCAGAGGCTGCAAAGAATGCTTTGAATGGCATCCGCTTCGATCCTGAAATTCGCAAACAC  
 TACGACTAGAGTTTGCTAAGGCAAACACGAAGATGGCCAAGAACAACTCGTAGGGACTCCAACCCAG  
 TACTCCTCTGCCAACACTGTACCTCAGTTCATTGCCAGAGAGCCATATGAGCTCACAGTGCCTGCACTT  
 TACCCAGTAGCCCTGAAGTGTGGGCCCGTACCTCTGTACCCAGCGGAGTTAGCGCCTGCTCTACCTC  
 TCCTGCTTTACCTATCCCGCTTCACTGCATGCCAGTGTCTCTCCTGAGGCAAAGCCCAACACACC  
 TGTCTTTGTCCACTTCTCCAGCAAATTAGATTTGTCTCTGGGAATGTGTTGTAACATACCAACCTACT  
 GCAGACCAGCAGAGGGAGCTCCCATGT

**ACGCGT**ACGCGGCCGCTCGAGCAGAACTCATCTCAGAAGAGGATCTGGCAGCAAATGATATCCTGGATT  
 ACAAGGATGACGACGATAAGGTTTAA



[View online »](#)

**Protein Sequence:** >RC200248 protein sequence  
Red=Cloning site Green=Tags(s)

MNNGGKAEKENTPSEANLQEEVRTL FVSGPLDIPRELYLLFRPFKGYEGSLIKLTSKQPVGFVSFDS  
 RSEAEAAKNALNGIRFDPEIPQTLRLEFAKANTKMAKNKLVGTPNPSTPLPNTVPQFIAREPYELTVPAL  
 YPSSPEVWAPYPLYPALPALPPAFTYPASLHAQCF SPEAKNTPVFCPLLQQIRFVSGNVFVTYQPT  
 ADQQRELPC

TRTRPLEQKLISEEDLAANDILDYKDDDDKV

**Chromatograms:** [https://cdn.origene.com/chromatograms/mk6392\\_e08.zip](https://cdn.origene.com/chromatograms/mk6392_e08.zip)

**Restriction Sites:** SgfI-MluI

**Cloning Scheme:**



**ACCN:** NM\_001008712

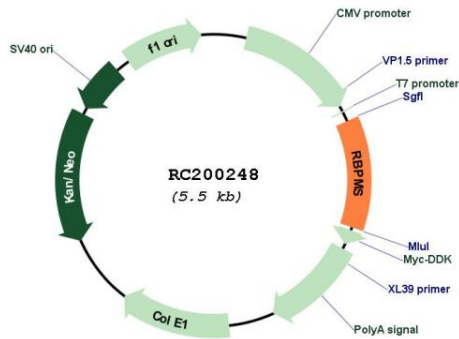
**ORF Size:** 657 bp

**OTI Disclaimer:** The molecular sequence of this clone aligns with the gene accession number as a point of reference only. However, individual transcript sequences of the same gene can differ through naturally occurring variations (e.g. polymorphisms), each with its own valid existence. This clone is substantially in agreement with the reference, but a complete review of all prevailing variants is recommended prior to use. [More info](#)

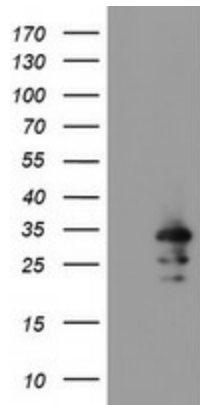
**OTI Annotation:** This clone was engineered to express the complete ORF with an expression tag. Expression varies depending on the nature of the gene.

**Components:** The ORF clone is ion-exchange column purified and shipped in a 2D barcoded Matrix tube containing 10ug of transfection-ready, dried plasmid DNA (reconstitute with 100 ul of water).

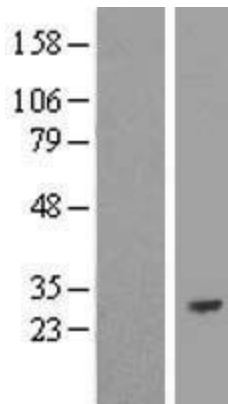
<b>Reconstitution Method:</b>	<ol style="list-style-type: none"><li>1. Centrifuge at 5,000xg for 5min.</li><li>2. Carefully open the tube and add 100ul of sterile water to dissolve the DNA.</li><li>3. Close the tube and incubate for 10 minutes at room temperature.</li><li>4. Briefly vortex the tube and then do a quick spin (less than 5000xg) to concentrate the liquid at the bottom.</li><li>5. Store the suspended plasmid at -20°C. The DNA is stable for at least one year from date of shipping when stored at -20°C.</li></ol>
<b>Note:</b>	Plasmids are not sterile. For experiments where strict sterility is required, filtration with 0.22um filter is required.
<b>RefSeq:</b>	<u>NM_001008712.2</u> , <u>NP_001008712.1</u>
<b>RefSeq Size:</b>	1366 bp
<b>RefSeq ORF:</b>	660 bp
<b>Locus ID:</b>	11030
<b>UniProt ID:</b>	<u>Q93062</u>
<b>Cytogenetics:</b>	8p12
<b>Protein Families:</b>	Stem cell - Pluripotency
<b>MW:</b>	24.3 kDa
<b>Gene Summary:</b>	<p>This gene encodes a member of the RNA recognition motif family of RNA-binding proteins. The RNA recognition motif is between 80-100 amino acids in length and family members contain one to four copies of the motif. The RNA recognition motif consists of two short stretches of conserved sequence, as well as a few highly conserved hydrophobic residues. The encoded protein has a single, putative RNA recognition motif in its N-terminus. Alternative splicing results in multiple transcript variants encoding different isoforms. [provided by RefSeq, Jun 2013]</p>

**Product images:**


Circular map for RC200248



HEK293T cells were transfected with the pCMV6-ENTRY control (Cat# [PS100001], Left lane) or pCMV6-ENTRY RBPM5 (Cat# RC200248, Right lane) cDNA for 48 hrs and lysed. Equivalent amounts of cell lysates (5 ug per lane) were separated by SDS-PAGE and immunoblotted with anti-RBPM5 (Cat# [TA800206]). Positive lysates [LY423359] (100ug) and [LC423359] (20ug) can be purchased separately from OriGene.



Western blot validation of overexpression lysate (Cat# [LY423359]) using anti-DDK antibody (Cat# [TA50011-100]). Left: Cell lysates from untransfected HEK293T cells; Right: Cell lysates from HEK293T cells transfected with RC200248 using transfection reagent MegaTran 2.0 (Cat# [TT210002]).