

Product datasheet for RC200244

CLEC4E (NM_014358) Human Tagged ORF Clone

Product data:

| | |
|---------------------------|---|
| Product Type: | Expression Plasmids |
| Product Name: | CLEC4E (NM_014358) Human Tagged ORF Clone |
| Tag: | Myc-DDK |
| Symbol: | CLEC4E |
| Synonyms: | CLECSF9; MINCLE |
| Mammalian Cell Selection: | Neomycin |
| Vector: | pCMV6-Entry (PS100001) |
| E. coli Selection: | Kanamycin (25 ug/mL) |
| ORF Nucleotide Sequence: | >RC200244 ORF sequence Red=Cloning site Blue=ORF Green=Tags(s) |

TTTTGTAATACGACTCACTATAGGGCGCCGGGAATTCGTCGACTGGATCCGGTACCGAGGAGATCTGCC
GCC**CGATCGCC**

ATGAATTCATCTAAATCATCTGAAACACAATGCACAGAGAGAGGATGCTTCTCTCCAAATGTTCTTAT
GGACTGTTGCTGGGATCCCCATCCTATTTCTCAGTGCCTGTTTCATCACCAGATGTGTTGTGACATTTTCG
CATCTTTCAAACCTGTGATGAGAAAAAGTTTCAGCTACCTGAGAATTTACAGAGCTCTCCTGCTACAAT
TATGGATCAGGTTCAAGTCAAGAATTGTTGTCCATTGAACTGGGAATATTTCAATCCAGCTGCTACTTCT
TTTCTACTGACACCATTTCTGGGCGTTAAGTTTAAAGAACTGCTCAGCCATGGGGGCTCACCTGGTGGT
TATCAACTCACAGGAGGAGCAGGAATTCCTTTCTACAAGAAACCTAAAATGAGAGAGTTTTTTATTGGA
CTGTCAGACCAGGTTGTGAGGGTCAAGTGGCAATGGGTGGACGGCACACCTTTGACAAAAGTCTCTGAGCT
TCTGGGATGTAGGGGAGCCCAACAACATAGCTACCCTGGAGGACTGTGCCACCATGAGAGACTCTTCAAA
CCCAAGGCAAAATTGGAATGATGTAACCTGTTTCCTCAATATTTTCGGATTTGTGAAATGGTAGGAATA
AATCCTTTGAACAAAGGAAAATCTCTT

ACGCGTACGCGGCGCTCGAGCAGAAACTCATCTCAGAAGAGGATCTGGCAGCAAATGATATCTGGATT
ACAAGGATGACGACGATAAGGTTTAA



[View online »](#)

Protein Sequence: >RC200244 protein sequence
Red=Cloning site Green=Tags(s)

MNSSKSSETQCTERGCFFSSQMFLWTVAGIPIFLSACFITRCVVTFRIFQTCDEKKFQLPENFTELSYCN
 YGSGSVKNCCPLNWEYFQSSCYFFSTDTISWALSLKNCSAMGAHLVVINSQEEQEFLSYKKPKMREFFIG
 LSDQVVEGQWQWVDGTP LTKSLSFWDVGEPNNIATLEDCATMRDSSNPRQNWNDVTCFLNYFRICEMVGI
 NPLNKGKSL

TRTRPLEQKLISEEDLAANDILDYKDDDDKV

Chromatograms: https://cdn.origene.com/chromatograms/mk6396_a11.zip

Restriction Sites: SgfI-MluI

Cloning Scheme:



ACCN: NM_014358

ORF Size: 657 bp

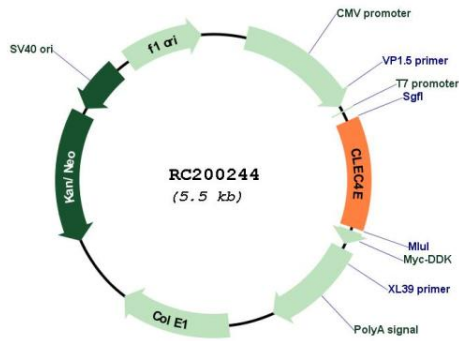
OTI Disclaimer: The molecular sequence of this clone aligns with the gene accession number as a point of reference only. However, individual transcript sequences of the same gene can differ through naturally occurring variations (e.g. polymorphisms), each with its own valid existence. This clone is substantially in agreement with the reference, but a complete review of all prevailing variants is recommended prior to use. [More info](#)

OTI Annotation: This clone was engineered to express the complete ORF with an expression tag. Expression varies depending on the nature of the gene.

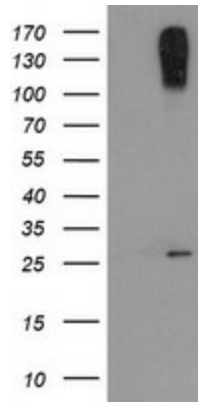
Components: The ORF clone is ion-exchange column purified and shipped in a 2D barcoded Matrix tube containing 10ug of transfection-ready, dried plasmid DNA (reconstitute with 100 ul of water).

| | |
|-------------------------------|--|
| Reconstitution Method: | <ol style="list-style-type: none">1. Centrifuge at 5,000xg for 5min.2. Carefully open the tube and add 100ul of sterile water to dissolve the DNA.3. Close the tube and incubate for 10 minutes at room temperature.4. Briefly vortex the tube and then do a quick spin (less than 5000xg) to concentrate the liquid at the bottom.5. Store the suspended plasmid at -20°C. The DNA is stable for at least one year from date of shipping when stored at -20°C. |
| Note: | Plasmids are not sterile. For experiments where strict sterility is required, filtration with 0.22um filter is required. |
| RefSeq: | NM_014358.4 |
| RefSeq Size: | 2158 bp |
| RefSeq ORF: | 660 bp |
| Locus ID: | 26253 |
| UniProt ID: | Q9ULY5 |
| Cytogenetics: | 12p13.31 |
| Domains: | CLECT |
| Protein Families: | Druggable Genome, Transmembrane |
| MW: | 25.1 kDa |
| Gene Summary: | <p>This gene encodes a member of the C-type lectin/C-type lectin-like domain (CTL/CTLD) superfamily. Members of this family share a common protein fold and have diverse functions, such as cell adhesion, cell-cell signalling, glycoprotein turnover, and roles in inflammation and immune response. The encoded type II transmembrane protein is a downstream target of CCAAT/enhancer binding protein (C/EBP), beta (CEBPB) and may play a role in inflammation. Alternative splice variants have been described but their full-length sequence has not been determined. This gene is closely linked to other CTL/CTLD superfamily members on chromosome 12p13 in the natural killer gene complex region. [provided by RefSeq, Jul 2008]</p> |

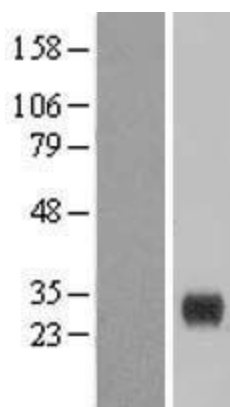
Product images:



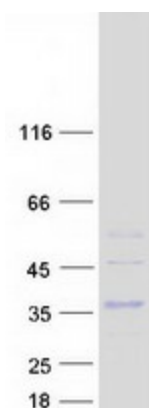
Circular map for RC200244



HEK293T cells were transfected with the pCMV6-ENTRY control (Cat# [PS100001], Left lane) or pCMV6-ENTRY CLEC4E (Cat# RC200244, Right lane) cDNA for 48 hrs and lysed. Equivalent amounts of cell lysates (5 ug per lane) were separated by SDS-PAGE and immunoblotted with anti-CLEC4E (Cat# [TA505101]). Positive lysates [LY415339] (100ug) and [LC415339] (20ug) can be purchased separately from OriGene.



Western blot validation of overexpression lysate (Cat# [LY415339]) using anti-DDK antibody (Cat# [TA50011-100]). Left: Cell lysates from untransfected HEK293T cells; Right: Cell lysates from HEK293T cells transfected with RC200244 using transfection reagent MegaTran 2.0 (Cat# [TT210002]).



Coomassie blue staining of purified CLEC4E protein (Cat# [TP300244]). The protein was produced from HEK293T cells transfected with CLEC4E cDNA clone (Cat# RC200244) using MegaTran 2.0 (Cat# [TT210002]).