

Product datasheet for **RC200243**

RUSC1 (NM_014328) Human Tagged ORF Clone

Product data:

Product Type:	Expression Plasmids
Product Name:	RUSC1 (NM_014328) Human Tagged ORF Clone
Tag:	Myc-DDK
Symbol:	RUSC1
Synonyms:	NESCA
Mammalian Cell Selection:	Neomycin
Vector:	pCMV6-Entry (PS100001)
E. coli Selection:	Kanamycin (25 ug/mL)



[View online »](#)

ORF Nucleotide Sequence:

>RC200243 ORF sequence
 Red=Cloning site Blue=ORF Green=Tags(s)

TTTTGTAATACGACTCACTATAGGGCGGCCGGAATTCGTCGACTGGATCCGGTACCGAGGAGATCTGCC
 GCC**CGCATCGCC**

ATGGCAGAAGCCCAGAGTGGGACTGGTCACTGCAGGAGCAGAAGAAAGTCTTCTGATAGCCGTCAGCG
 TCTCCGTTGATAAAATCATCTCGCATTTTCGGGGCCGCCGGAACCTGGTGAGAAGGCCAGTTGGGTGA
 TAGCCGGCTGAGCCCGGATGTGGGGCACCTGGTCTGACCACCCTCTGCCCGGCCCTCCACGCCCTGGT
 GCGGACGGGCTGAAGCCTTTCGGAAGGACCTCATCACCAGGAGCAGGAGCAGCCCTGGAGCGTGG
 TGGAGGCGTGGTGAAGCCAGGCTCCAGCACCCGCTCCCTTGGAAACCTGTATAGCCAGGTCAGCCGCT
 AGCCCCGCTGAGCAGCAGCCGTAGCCGCTTCCATGCCTTTATCCTGGGCCTCCTCAACACCAAGCAGTTG
 GAGCTGTGGTTTTCCAGTCTCCAGGAAGATGCAGGCTGCTCCTCCTGTACCTGCCAACAGGATTTT
 TCTCCCTGGCCCGGGTGGTGTCCCTCCCTGTCCACAGAGCTGCTGCTCCTGCTGCAGCCATTGTCGGT
 GCTCACTTTCACCTGGACCTGCTCTTTGAGCACCACCACCCTGCCCTGGGCCACCTCAGGCCCT
 GCCCTCCAGGCCACCTCCAGCTCTGCAGCAGACTATGCAAGCCATGCTGCACCTTTGGGGCCGGCTGG
 CCCAGAGCCTTCGGGGGACTTCCAAGGAAGCTGCTTCAGACCCCTCTGACTCTCCAAACCTCCACACC
 AGGGAGCTGGTGGGAGCAGTTGACCCAGGCTCCCGGGTCTATGCCTCTGGGGGACTGAGGGCTTTCCT
 CTTTCCGATGGGACCGGGGCGTATGGGACTGCAGTGAAGAAGTGCACAGGAGAGACCCCTGCCCA
 CAGATGAGATGGCACCAGGACGGGGCTCTGGTTGGGAAGACTATTTGGAGTGCCTGGGGCCCCGAGA
 AAATGAGAATGGAGCCCTAAAGTCCAGGAGACCTAGCTGGCTGCCCCGACAGTGAAGTGTGTGGCT
 CTTGTGAAGCGGGGGCACCTCCCGAGATGCCTTCTCCTCAGGAGCTTGAAGCCTCAGCACCCAGGATGG
 TGCAAACCATAGGGCAGTGGGGCTCTGTGATCACACTGCTGCAAGACCTGACCAGTTGAGCTCCG
 GGTGGGGAAGTCTGCTGTGCATCACACAGTGGATGAGGACTGGCTCCGCTGTGGGCGGGATGGCATG
 GAGGGTCTGGTGCCTGTGGGTATACCTCCCTGTTCTG

ACGCGTACGCGGCCGCTCGAGCAGAACTCATCTCAGAAGAGGATCTGGCAGCAATGATATCCTGGATT
 ACAAGGATGACGACGATAAGGTTTAA

Protein Sequence:

>RC200243 protein sequence
 Red=Cloning site Green=Tags(s)

MAEAQSGTGQLQEQQKGLLIIVSVSVDKIISHFGAARNLVQKAQLGDSRLSPDVGHLLVTLCPALHALV
 ADGLKPFKDLITGQRRSPWSVVEASVKPGSSTRSLGTLYSQVSRAPLSSSRRFHAFILGLLNTKQL
 ELWFSSQLQEDAGLLSLLYLPTGFFSLARGGCPSTELLLLLQPLSVLTFHLDLLEHHHHLPLGPPQAP
 APPGPPALQQTMQAMLHFGGRLAQSLRGTSKEAASDPSPNLPTPGSWWEQLTQASRVYASGGTEGFP
 LSRWAPGRHGTAEEGAQERPLPTDEMAPGRGLWLGRFGVPGGPAENENGALKSRRPSSWLPTVSVLA
 LVKRGAPPEMPSPQELEASAPRMVQTHRAVRALCDHTAARPDQLSFRRGEVLRVITTVDEDWLRRCGRDGM
 EGLVPVGYTSLVL

TRTRPLEQKLISEEDLAANDILDYKDDDDKV

Chromatograms:

https://cdn.origene.com/chromatograms/mk6588_c12.zip

Restriction Sites:

SgfI-MluI

Cloning Scheme:

ACCN: NM_014328

ORF Size: 1299 bp

OTI Disclaimer: The molecular sequence of this clone aligns with the gene accession number as a point of reference only. However, individual transcript sequences of the same gene can differ through naturally occurring variations (e.g. polymorphisms), each with its own valid existence. This clone is substantially in agreement with the reference, but a complete review of all prevailing variants is recommended prior to use. [More info](#)

OTI Annotation: This clone was engineered to express the complete ORF with an expression tag. Expression varies depending on the nature of the gene.

Components: The ORF clone is ion-exchange column purified and shipped in a 2D barcoded Matrix tube containing 10ug of transfection-ready, dried plasmid DNA (reconstitute with 100 ul of water).

- Reconstitution Method:**
1. Centrifuge at 5,000xg for 5min.
 2. Carefully open the tube and add 100ul of sterile water to dissolve the DNA.
 3. Close the tube and incubate for 10 minutes at room temperature.
 4. Briefly vortex the tube and then do a quick spin (less than 5000xg) to concentrate the liquid at the bottom.
 5. Store the suspended plasmid at -20°C. The DNA is stable for at least one year from date of shipping when stored at -20°C.

RefSeq: [NM_014328.4](#)
RefSeq Size: 2568 bp

RefSeq ORF: 1302 bp

Locus ID: 23623

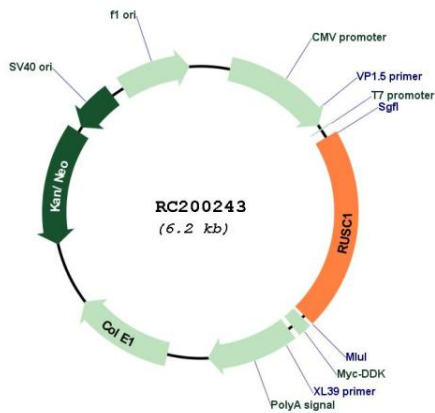
UniProt ID: [Q9BVN2](#)
Cytogenetics: 1q22

Domains: SH3, RUN

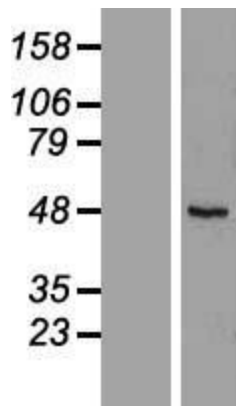
MW: 46.6 kDa

Gene Summary: Putative signaling adapter which may play a role in neuronal differentiation. May be involved in regulation of NGF-dependent neurite outgrowth. Proposed to play a role in neuronal vesicular trafficking, specifically involving pre-synaptic membrane proteins. Seems to be involved in signaling pathways that are regulated by the prolonged activation of MAPK. Can regulate the polyubiquitination of IKBKG and thus may be involved in regulation of the NF-kappa-B pathway.[UniProtKB/Swiss-Prot Function]

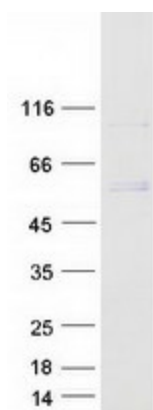
Product images:



Circular map for RC200243



Western blot validation of overexpression lysate (Cat# [LY415356]) using anti-DDK antibody (Cat# [TA50011-100]). Left: Cell lysates from untransfected HEK293T cells; Right: Cell lysates from HEK293T cells transfected with RC200243 using transfection reagent MegaTran 2.0 (Cat# [TT210002]).



Coomassie blue staining of purified RUSC1 protein (Cat# [TP300243]). The protein was produced from HEK293T cells transfected with RUSC1 cDNA clone (Cat# RC200243) using MegaTran 2.0 (Cat# [TT210002]).