

## Product datasheet for **RC200241**

### Sumo 3 (SUMO3) (NM\_006936) Human Tagged ORF Clone

#### Product data:

**Product Type:** Expression Plasmids  
**Product Name:** Sumo 3 (SUMO3) (NM\_006936) Human Tagged ORF Clone  
**Tag:** Myc-DDK  
**Symbol:** Sumo 3  
**Synonyms:** SMT3A; Smt3B; SMT3H1; SUMO-3  
**Mammalian Cell Selection:** Neomycin  
**Vector:** pCMV6-Entry (PS100001)  
**E. coli Selection:** Kanamycin (25 ug/mL)  
**ORF Nucleotide Sequence:** >RC200241 ORF sequence  
**Red=Cloning site Blue=ORF Green=Tags(s)**

TTTTGTAATACGACTCACTATAGGGCGCCGGGAATTCGTCGACTGGATCCGGTACCGAGGAGATCTGCC  
GCC**CGATCGCC**

ATGTCGAGGAGAAGCCCAAGGAGGGTGTGAAGACAGAGAATGACCACATCAACCTGAAGGTGGCCGGC  
AGGACGGCTCCGTGGTGCAGTTCAGATCAAGAGGCACACGCCGCTGAGCAAGCTGATGAAGGCCTACTG  
CGAGAGGCAGGGCTTGTCAATGAGGCAGATCAGATTCAGGTTTCGACGGGCAGCCAATCAATGAAACTGAC  
ACTCCAGCACAGCTGGAGATGGAGGACGAGGACACCATCGACGTGCCAGCAGCAGACGGGAGGTGTGC  
CGGAGAGCAGCTGGCAGGGCACAGTTTC

**ACGCGT**ACGCGGCCGCTCGAGCAGAAACTCATCTCAGAAGAGGATCTGGCAGCAAATGATATCCTGGATT  
ACAAGGATGACGACGATAAGGTTTAA

**Protein Sequence:** >RC200241 protein sequence  
**Red=Cloning site Green=Tags(s)**  
MSEEKPKKEGVKTENDHINLKVAGQDGSVVQFKIKRHTPLSKLMKAYCERQGLSMRQIRFRFDGQPINETD  
TPAQLEMEDEDTIDVFQQQTGGVPESLAGHSF

**TR**TRPLEQKLISEEDLAANDILDYKDDDDKV

**Chromatograms:** [https://cdn.origene.com/chromatograms/mk6143\\_a02.zip](https://cdn.origene.com/chromatograms/mk6143_a02.zip)

**Restriction Sites:** SgfI-MluI



[View online »](#)

**Cloning Scheme:**


**ACCN:** NM\_006936

**ORF Size:** 309 bp

**OTI Disclaimer:** The molecular sequence of this clone aligns with the gene accession number as a point of reference only. However, individual transcript sequences of the same gene can differ through naturally occurring variations (e.g. polymorphisms), each with its own valid existence. This clone is substantially in agreement with the reference, but a complete review of all prevailing variants is recommended prior to use. [More info](#)

**OTI Annotation:** This clone was engineered to express the complete ORF with an expression tag. Expression varies depending on the nature of the gene.

**Components:** The ORF clone is ion-exchange column purified and shipped in a 2D barcoded Matrix tube containing 10ug of transfection-ready, dried plasmid DNA (reconstitute with 100 ul of water).

- Reconstitution Method:**
1. Centrifuge at 5,000xg for 5min.
  2. Carefully open the tube and add 100ul of sterile water to dissolve the DNA.
  3. Close the tube and incubate for 10 minutes at room temperature.
  4. Briefly vortex the tube and then do a quick spin (less than 5000xg) to concentrate the liquid at the bottom.
  5. Store the suspended plasmid at -20°C. The DNA is stable for at least one year from date of shipping when stored at -20°C.

**RefSeq:** [NM\\_006936.3](#)

**RefSeq Size:** 1831 bp

**RefSeq ORF:** 312 bp

**Locus ID:** 6612

UniProt ID: [P55854](#)

Cytogenetics: 21q22.3

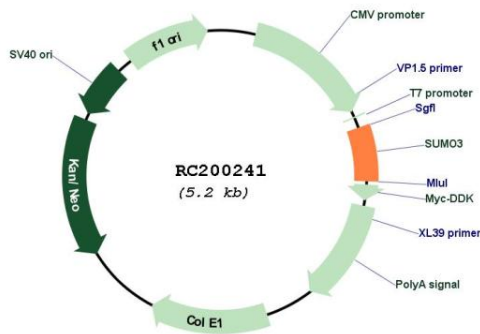
Domains: UBQ

Protein Families: Druggable Genome

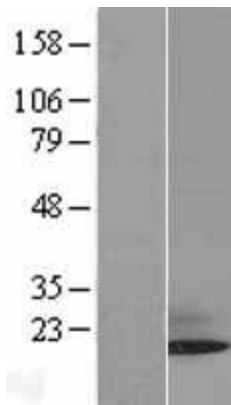
MW: 11.6 kDa

**Gene Summary:** This gene encodes a member of the small ubiquitin-related modifier (SUMO) family of eukaryotic proteins. The encoded protein is covalently conjugated to other proteins via a post-translation modification known as sumoylation. Sumoylation may play a role in a wide variety of cellular processes, including nuclear transport, DNA replication and repair, mitosis, transcriptional regulation, and signal transduction. Alternatively spliced transcript variants encoding distinct proteins have been described. [provided by RefSeq, Feb 2014]

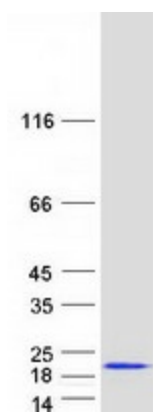
**Product images:**



Circular map for RC200241



Western blot validation of overexpression lysate (Cat# [LY402068]) using anti-DDK antibody (Cat# [TA50011-100]). Left: Cell lysates from untransfected HEK293T cells; Right: Cell lysates from HEK293T cells transfected with RC200241 using transfection reagent MegaTran 2.0 (Cat# [TT210002]).



Coomassie blue staining of purified SUMO3 protein (Cat# [TP300241]). The protein was produced from HEK293T cells transfected with SUMO3 cDNA clone (Cat# RC200241) using MegaTran 2.0 (Cat# [TT210002]).