

Product datasheet for **RC200240**

UBE2C (NM_181801) Human Tagged ORF Clone

Product data:

Product Type:	Expression Plasmids
Product Name:	UBE2C (NM_181801) Human Tagged ORF Clone
Tag:	Myc-DDK
Symbol:	UBE2C
Synonyms:	dj447F3.2; UBCH10
Mammalian Cell Selection:	Neomycin
Vector:	pCMV6-Entry (PS100001)
E. coli Selection:	Kanamycin (25 ug/mL)
ORF Nucleotide Sequence:	>RC200240 ORF sequence Red=Cloning site Blue=ORF Green=Tags(s)

TTTTGTAATACGACTCACTATAGGGCGGCCGGAATTCGTCGACTGGATCCGGTACCGAGGAGATCTGCC
GCC**CGATCGCC**

ATGGCTTCCAAAACCGCGACCCAGCCGCACTAGCGTCGCCGCCCGTAAAGGAGCTGAGCCGAGCG
GGGGCGCCGCCGGGTCCGGTGGGCAAAGGCTACAGCAGGAGCTGATGACCCTCATGATGTCTGGCGA
TAAAGGGATTTCTGCCTCCCTGAATCAGACAACCTTTTCAAATGGGTAGGGACCATCCATGGAGCAGCT
GGAACAGTATATGAAGACCTGAGGTATAAGCTCTCGTAGAGTCCCAAGTGGCTACCCTTACAATGCGC
CCACAGTGAAGTTCCTCACGCCCTGCTATCACCCAACGTGGACACCCAGGGTAACATATGCCTGGACAT
CCTGAAGGAAAAGTGGTCTGCCCTGTATGATGTCAGGACATTCTGCTCTCCATCCAGAGCCTTCTAGGA
GAACCCAACATTGATAGTCCCTTGAACACACATGCTGCCGAGCTCTGAAAAACCCACAGCTTTTAAAG
AGTACCTGCAAGAAACCTACTCAAAGCAGGTACCAGCCAGGAGCCC

ACGCGTACGCGGCCGCTCGAGCAGAACTCATCTCAGAAGAGGATCTGGCAGCAAATGATATCCTGGATT
ACAAGGATGACGACGATAAGGTTTAA

Protein Sequence:	>RC200240 protein sequence Red=Cloning site Green=Tags(s)
-------------------	--

MASQNRDPAATSVAAARKGAEPSSGAARGPVGKRLQQELMTLMMSGDKGISAFPESDNLFKWVGTIHGAA
GTVYEDLRYKLSLEFSPGYPNAPTvkFLTPCYHPNVDtQGNICLDILKEKWSALYDVRTILLSIQSLLG
EPNIDSPLNTHAAELWKNPTAFKKYLQETYSKQVTSQEP

TRTRPLEQKLISEEDLAANDILDYKDDDDKV

Chromatograms:	https://cdn.origene.com/chromatograms/mk6091_f07.zip
----------------	---



[View online »](#)

Restriction Sites: SgfI-MluI

Cloning Scheme:



ACCN: NM_181801

ORF Size: 540 bp

OTI Disclaimer: The molecular sequence of this clone aligns with the gene accession number as a point of reference only. However, individual transcript sequences of the same gene can differ through naturally occurring variations (e.g. polymorphisms), each with its own valid existence. This clone is substantially in agreement with the reference, but a complete review of all prevailing variants is recommended prior to use. [More info](#)

OTI Annotation: This clone was engineered to express the complete ORF with an expression tag. Expression varies depending on the nature of the gene.

Components: The ORF clone is ion-exchange column purified and shipped in a 2D barcoded Matrix tube containing 10ug of transfection-ready, dried plasmid DNA (reconstitute with 100 ul of water).

Reconstitution Method:

1. Centrifuge at 5,000xg for 5min.
2. Carefully open the tube and add 100ul of sterile water to dissolve the DNA.
3. Close the tube and incubate for 10 minutes at room temperature.
4. Briefly vortex the tube and then do a quick spin (less than 5000xg) to concentrate the liquid at the bottom.
5. Store the suspended plasmid at -20°C. The DNA is stable for at least one year from date of shipping when stored at -20°C.

RefSeq Size: 901 bp

RefSeq ORF: 423 bp

Locus ID: 11065

UniProt ID: [O00762](#)

Cytogenetics: 20q13.12

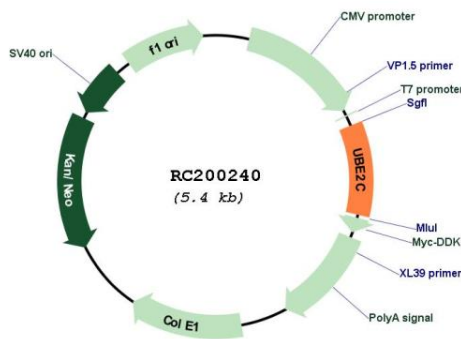
Protein Families: Druggable Genome

Protein Pathways: Ubiquitin mediated proteolysis

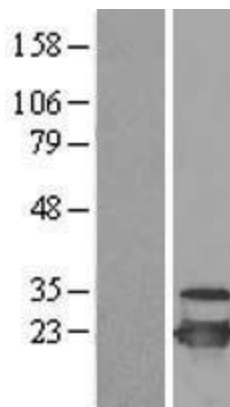
MW: 19.7 kDa

Gene Summary: The modification of proteins with ubiquitin is an important cellular mechanism for targeting abnormal or short-lived proteins for degradation. Ubiquitination involves at least three classes of enzymes: ubiquitin-activating enzymes, ubiquitin-conjugating enzymes, and ubiquitin-protein ligases. This gene encodes a member of the E2 ubiquitin-conjugating enzyme family. The encoded protein is required for the destruction of mitotic cyclins and for cell cycle progression, and may be involved in cancer progression. Multiple transcript variants encoding different isoforms have been found for this gene. Pseudogenes of this gene have been defined on chromosomes 4, 14, 15, 18, and 19. [provided by RefSeq, Aug 2013]

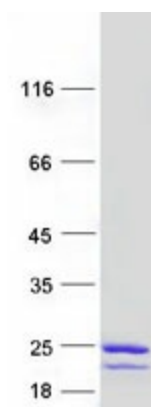
Product images:



Circular map for RC200240



Western blot validation of overexpression lysate (Cat# [LY416256]) using anti-DDK antibody (Cat# [TA50011-100]). Left: Cell lysates from untransfected HEK293T cells; Right: Cell lysates from HEK293T cells transfected with [RC208741] using transfection reagent MegaTran 2.0 (Cat# [TT210002]).



Coomassie blue staining of purified UBE2C protein (Cat# [TP300240]). The protein was produced from HEK293T cells transfected with UBE2C cDNA clone (Cat# RC200240) using MegaTran 2.0 (Cat# [TT210002]).