

## Product datasheet for **RC200239**

### **TMEM14B (NM\_030969) Human Tagged ORF Clone**

#### Product data:

**Product Type:** Expression Plasmids

**Tag:** Myc-DDK

**Symbol:** TMEM14B

**Mammalian Cell Selection:** Neomycin

**Vector:** pCMV6-Entry (PS100001)

**E. coli Selection:** Kanamycin (25 ug/mL)

**ORF Nucleotide Sequence:** >RC200239 ORF sequence  
Red=Cloning site Blue=ORF Green=Tags(s)

TTTTGTAATACGACTCACTATAGGGCGGCCGGAATTCGTCGACTGGATCCGGTACCGAGGAGATCTGCC  
GCC**CGCATCGCC**

ATGGAGAAGCCCTCTTCCATTAGTGCCTTTCGATTGGTTTGGCTTACACAGCACTGGTTGTTT  
CTGGTGGGATCGTTGGCTATGTAACAGGCAGCGTCCGTCCTGGCTGCATGGCTGCTCTTCGGCAG  
TCTAGCCGGCCTGGGTGCTTACCAGCTGTATCAGGATCCAAGGAACGTTTGGGGTTTCCTAGCCGCTACA  
TCTGTTACTTTTGTGGTGTATGGGAATGAGATCCTACTACTATGGAAAATTCATGCCTGTAGGTTTAA  
TTGCAGGTGCCAGTTTGTGATGGCCGCCAAAGTTGGAGTTCGTATGTTGATGACATCTGAT

**ACGCGT**ACGCGGCCGCTCGAGCAGAACTCATCTCAGAAGAGGATCTGGCAGCAAATGATATCCTGGATT  
ACAAGGATGACGACGATAAGGTTTAA

**Protein Sequence:** >RC200239 protein sequence  
Red=Cloning site Green=Tags(s)

MEKPLFPLVPLHWFQGYTALVVSIGIVGYVKTGSVPSLAAWLLFGSLAGLGAYQLYQDPRNVWGFLAAT  
SVTFVGMGMRSYYGKFMVGLIAGASLLMAAKVGVRLMTSD

**TR**TRPLEQKLISEEDLAANDILDYKDDDDKV

**Chromatograms:** [https://cdn.origene.com/chromatograms/mk6386\\_f07.zip](https://cdn.origene.com/chromatograms/mk6386_f07.zip)

**Restriction Sites:** SgfI-MluI



## Cloning Scheme:



ACCN: NM\_030969

ORF Size: 342 bp

**OTI Disclaimer:** The molecular sequence of this clone aligns with the gene accession number as a point of reference only. However, individual transcript sequences of the same gene can differ through naturally occurring variations (e.g. polymorphisms), each with its own valid existence. This clone is substantially in agreement with the reference, but a complete review of all prevailing variants is recommended prior to use. [More info](#)

**OTI Annotation:** This clone was engineered to express the complete ORF with an expression tag. Expression varies depending on the nature of the gene.

**Components:** The ORF clone is ion-exchange column purified and shipped in a 2D barcoded Matrix tube containing 10ug of transfection-ready, dried plasmid DNA (reconstitute with 100 ul of water).

**Reconstitution Method:**

1. Centrifuge at 5,000xg for 5min.
2. Carefully open the tube and add 100ul of sterile water to dissolve the DNA.
3. Close the tube and incubate for 10 minutes at room temperature.
4. Briefly vortex the tube and then do a quick spin (less than 5000xg) to concentrate the liquid at the bottom.
5. Store the suspended plasmid at -20°C. The DNA is stable for at least one year from date of shipping when stored at -20°C.

**Note:** Plasmids are not sterile. For experiments where strict sterility is required, filtration with 0.22um filter is required.

**RefSeq:** [NM\\_030969.2, NP\\_112231.2](#)  
**RefSeq Size:** 992 bp  
**RefSeq ORF:** 345 bp  
**Locus ID:** 81853  
**UniProt ID:** [Q9NUH8](#)

**Cytogenetics:** 6p24.2

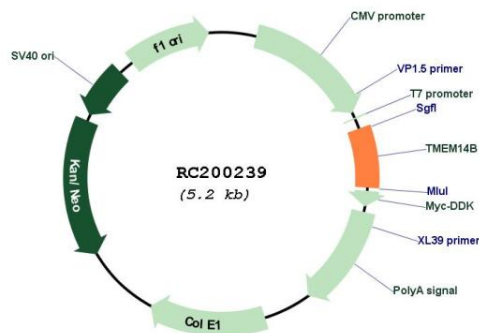
**Domains:** UPF0136

**Protein Families:** Transmembrane

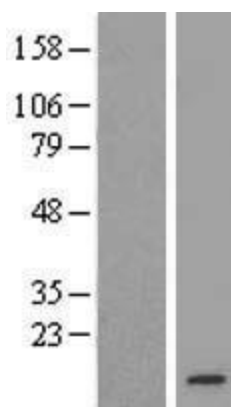
**MW:** 12.2 kDa

**Gene Summary:** Primate-specific protein involved in cortical expansion and folding in the developing neocortex. May drive neural progenitor proliferation through nuclear translocation of IQGAP1, which in turn promotes G1/S cell cycle transitions.[UniProtKB/Swiss-Prot Function]

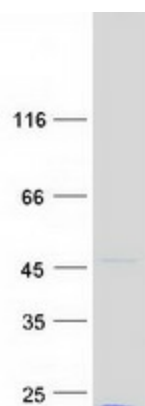
### Product images:



Circular map for RC200239



Western blot validation of overexpression lysate (Cat# [LY410633]) using anti-DDK antibody (Cat# [TA50011-100]). Left: Cell lysates from un-transfected HEK293T cells; Right: Cell lysates from HEK293T cells transfected with RC200239 using transfection reagent MegaTran 2.0 (Cat# [TT210002]).



Coomassie blue staining of purified TMEM14B protein (Cat# [TP300239]). The protein was produced from HEK293T cells transfected with TMEM14B cDNA clone (Cat# RC200239) using MegaTran 2.0 (Cat# [TT210002]).