

Product datasheet for **RC200237**

PACSIN2 (NM_007229) Human Tagged ORF Clone

Product data:

Product Type:	Expression Plasmids
Product Name:	PACSIN2 (NM_007229) Human Tagged ORF Clone
Tag:	Myc-DDK
Symbol:	PACSIN2
Synonyms:	SDPII
Mammalian Cell Selection:	Neomycin
Vector:	pCMV6-Entry (PS100001)
E. coli Selection:	Kanamycin (25 ug/mL)



[View online »](#)

ORF Nucleotide Sequence:

>RC200237 ORF sequence
 Red=Cloning site Blue=ORF Green=Tags(s)

TTTTGTAATACGACTCACTATAGGGCGGCCGGAATTCGTCGACTGGATCCGGTACCGAGGAGATCTGCC
 GCC**CGGATCGCC**

ATGTCTGTACATATGATGATTCCGTTGGAGTAGAAGTGTCCAGCGACAGCTTCTGGGAGTTCGGAACT
 ACAAGCGGACTGTGAAGCGGATCGACGATGGCCACCGCCTGTGCAGCGACCTCATGAACTGCCTGCATGA
 CGGGGCGCGCATCGAGAAGCGTATGCGCAGCAGCTCACTGAGTGGGCCCGCGCTGGAGGCAGCTCGTG
 GAGAAAGGGCCCCAGTACGGGACCGTGGAGAAGCCTGGATGGCCTTCATGTCCGAGGCAGAGAGGGTGA
 GCGAGCTGCACCTCGAGGTGAAGCCTCACTGATGAACGATGACTTCGAGAAGATCAAGAAGTGGCAGAA
 GGAAGCCTTTCACAAGCAGATGATGGGCGGCTTCAAGGAGACCAAGGAAGCTGAGGACGGCTTTCGGAAG
 GCACAGAAGCCCTGGCCAAGAAGCTGAAAGAGGTAGAAGCAGCAAGAAAGCCACCATGCAGCGTGCA
 AAGAGGAGAAGCTGGCTATCTCACGAGAAGCCAACAGCAAGGCAGACCCATCCCTCAACCCTGAACAGCT
 CAAGAAATGCAAGACAAAATAGAAAAGTGAAGCAAGATGTTCTTAAGACCAAGAGAAGTATGAGAAG
 TCCTGAAGGAAGCTCGACCAGGGCACACCCAGTACATGGAGAACATGGAGCAGGTGTTTGAAGCAGTGCC
 AGCAGTTCGAGGAGAAACGCCTTCGCTTCTCCGGGAGGTTCTGCTGGAGTTTCAAGAAGCACCTAGACCT
 GTCCAATGTGGCTGGCTACAAAGCCATTTACCATGACCTGGAGCAGAGCATCAGAGCAGCTGATGCAGTG
 GAGGACCTGAGGTGGTCCGAGCCAATCACGGGCCGGCATGGCCATGAACTGGCCCGAGTTTGAGGAGT
 GGTCCGCAGACCTGAATCGAACCTCAGCCGGAGAGAGAAGAAGAAGGCCACTGACGGCGTCAACCCTGAC
 GGGCATCAACCAGACAGGCGACCACTCTCTGCCGAGTAAAGCCAGCAGCACCCCTAATGTCCCGAGCAAC
 CCCGCCAGTCTGCGCAGTACAGTCCAGTACAACCCCTTCGAGGATGAGGACGACACGGGCAGCACCCG
 TCAGTGAGAAGGACGACACTAAGGCCAAAAATGTGAGCAGTACGAGAAGACCCAGAGCTATCCCACCGA
 CTGGTCAGACGATGAGTCTAACAACCCCTTCTCCTCCACGGATGCCAATGGGGACTCGAATCCATTCCGAC
 GACGACGCCACCTCGGGGACGGAAGTGCAGTCCGGGCCCTGTATGACTATGAGGGGACGAGCATGATG
 AGCTGAGCTTCAAGGCTGGGATGAGCTGACCAAGATGGAGGACGAGGATGAGCAGGGCTGGTGAAGGG
 ACGCTTGACAACGGGCAAGTTGGCCTATACCCGGCAAATATGTGGAGGCGATCCAG

ACGCGTACGCGGCCGCTCGAGCAGAAACTCATCTCAGAAGAGGATCTGGCAGCAAATGATATCCTGGATT
 ACAAGGATGACGACGATAAGGTTTAA

Protein Sequence:

>RC200237 protein sequence
 Red=Cloning site Green=Tags(s)

MSVTYDDSVGVEVSSDSFWEVGNKRTVKRIDDGHRLCSDLMNCLHERARIEKAYAQQLEWARRWRQLV
 EKGPPQYGTVEKAWMAFMSEAERVSELHLEVKASLMNDDFEKIKNWQKEAFHKQMMGGFKETKEAEDGFRK
 AQKPWAKKLKEVEAAKKAHHAACKKEKLAISREANSKADPSLNPEQLKKLQDKIECKQDVLKTKKEYEK
 SLKELDQGTTPQYMNEMEQVFEQCQQFEKRLRFFREVLLLEVQKHLDSLNVAGYKAIYHDLEQSIRAADAV
 EDLRWFRANHGPGMAMNWPQFEWESADLNRTLNRREKKKATDGVTLTGINTGDQSLPSKPSSTLNVPSN
 PAQSAQSQSSYNPFEDDDTGSTVSEKDDTKAKNVSSYEKTSYPTDWSDDPSNNPFSSTDANGSNPFD
 DDATSGTEVRVRALYDYEGQEHDEL SFKAGDEL TKMEDEDEQGWCKGRLDNGQVGLYPANYVEAIQ

TRTRPLEQKLISEEDLAANDILDYKDDDDKV

Chromatograms:

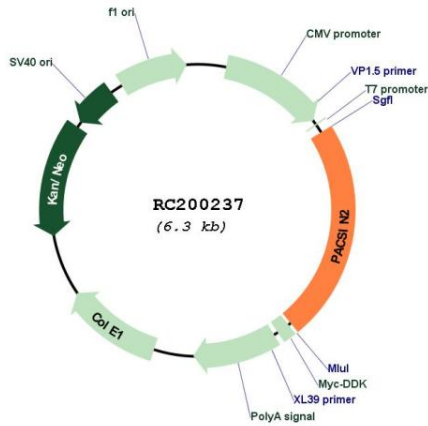
https://cdn.origene.com/chromatograms/mk6381_d01.zip

Restriction Sites:

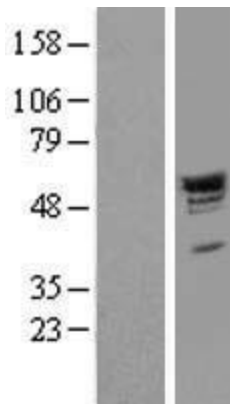
Sgfl-Mlul

Domains: FCH, SH3
MW: 55.7 kDa
Gene Summary: This gene is a member of the protein kinase C and casein kinase substrate in neurons family. The encoded protein is involved in linking the actin cytoskeleton with vesicle formation by regulating tubulin polymerization. Alternative splicing results in multiple transcript variants. [provided by RefSeq, May 2010]

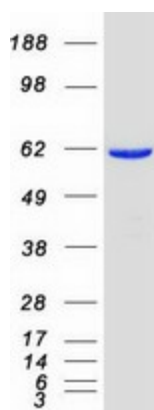
Product images:



Circular map for RC200237



Western blot validation of overexpression lysate (Cat# [LY416115]) using anti-DDK antibody (Cat# [TA50011-100]). Left: Cell lysates from untransfected HEK293T cells; Right: Cell lysates from HEK293T cells transfected with RC200237 using transfection reagent MegaTran 2.0 (Cat# [TT210002]).



Coomassie blue staining of purified PACSIN2 protein (Cat# [TP300237]). The protein was produced from HEK293T cells transfected with PACSIN2 cDNA clone (Cat# RC200237) using MegaTran 2.0 (Cat# [TT210002]).