

## Product datasheet for **RC200231**

### Flotillin 1 (FLOT1) (NM\_005803) Human Tagged ORF Clone

#### Product data:

Product Type:	Expression Plasmids
Product Name:	Flotillin 1 (FLOT1) (NM_005803) Human Tagged ORF Clone
Tag:	Myc-DDK
Symbol:	Flotillin 1
Mammalian Cell Selection:	Neomycin
Vector:	pCMV6-Entry (PS100001)
E. coli Selection:	Kanamycin (25 ug/mL)
ORF Nucleotide Sequence:	>RC200231 ORF sequence Red=Cloning site Blue=ORF Green=Tags(s)

TTTTGTAATACGACTCACTATAGGGCGGCCGGAATTCGTCGACTGGATCCGGTACCGAGGAGATCTGCC  
GCC**CGATCGCC**

ATGTTTTTCACTTGTGGCCAAATGAGGCCATGGTGGTCTCCGGTTCTGCCGAAGCCCCCAGTCATGG  
TGGCTGGAGGGCGTGTCTTTGTCTGCCCTGCATCCAACAGATCCAGAGGATCTCTCAACACACTGAC  
CCTCAATGTCAAGAGTAAAAAGTTTACACTCGCCATGGGGTCCCATCTCAGTCACTGGCATTGCCAG  
GTAAAAATCCAGGGGCAGAACAAAGGAGATGTTGGCGCCGCTGTGAGTGTTCCTGGGAAGACGGAGG  
CTGAGATTGCCACATTGCCCTGGAGACTTAGAGGGCCACCAGAGGGCCATCATGGCCACATGACTGT  
GGAGGAGATCTATAAGGACAGGCAGAAATTCAGAACAGGTTTTCAAAGTGGCCTCCTCAGACCTGGTC  
AACATGGGCATCAGTGTGGTTAGCTACACTCTGAAGGACATTCACGATGACCAGGACTATTTGCACTCTT  
TGGGGAAGGCTCGAACAGCTCAAGTCCAAAAAGATGCACGGATTGGAGAAGCAGAGGCCAAGAGAGATGC  
TGGGATCCGGGAAGCTAAAGCCAAGCAGGAAAAGGTGTCTGCTCAGTACCTGAGTGAGATCGAGATGGCC  
AAGGCACAGAGAGATTACGAACTGAAGAAGGCCGCTATGACATCGAGGTCAACACCCGCCGAGCACAGG  
CTGACCTGGCCTATCAGCTTCAGGTGGCCAAGACTAAGCAGCAGATTGAGGAGCAGCGGGTGCAGGTGCA  
GGTGGTGGAGCGGGCCAGCAGGTGGCAGTGCAGGAGCAGGAGATCGCCCGGGGAGAAGGAGCTGGAG  
GCCCGGTTGCGGAAGCCAGCGGAAGCGGAGCGCTACAAGCTGGAGCGCTAGCCGAGGCAGAGAAGTCCC  
AACTAATTATGCAGGCGGAGGCAGAAAGCCGCTGTGCGGATGCGTGGGGAAGCTGAGGCTTTGCCAT  
AGGGGCCCGAGCCGAGCCGAGGCTGAGCAGATGGCCAAGAAGGCAGAAAGCTTCCAGCTGTACCAAGAG  
GCTGCTCAGCTGGACATGCTGCTAGAGAAGCTGCCCCAGGTGGCAGAGGAGATCAGTGGTCCCTTGACTT  
CAGCCAATAAGATCACACTGGTGTCCAGCGGCAGTGGGACCATGGGGGCAGCCAAAGTACTGGGGAAGT  
ACTGGACATTCTAACTCGCTGCCAGAGAGTGTGGAAAGACTCACAGGCGTGAGCATCTCCAGGTGAAT  
CACAAGCCTTTGAGAACAGCC

**ACGCGT**ACGCGGCCGCTCGAGCAGAAACTCATCTCAGAAGAGGATCTGGCAGCAAATGATATCCTGGATT  
ACAAGGATGACGACGATAAGGTTTAA



[View online »](#)

**Protein Sequence:** >RC200231 protein sequence  
Red=Cloning site Green=Tags(s)

MFFTCGPNEAMVVSFGCRSPVMVAGGRVFLPCIQQIQRISLNTLTLNVKSEKVYTRHGVPISVTGIAQ  
 VKIQGQNKEMLAACQMF LGKTEAEIAHIALETLEGHQRAIMAHMTVEE IYKDRQKFSEQVFKVASSDLV  
 NMGISVVSYTLDI HDDQDYLHSLGKARTAQVQKDARIGEA EAKRDAGIREAKAKQEKVSAQYLSEIEMA  
 KAQRDYELKKAAYDIEVNTRRAQADLAYQLQVAKTKQIEEQRVQVQVVERAQVAVQEQEIARREKELE  
 ARVRKPAEAERYKLERLAEAEKSQLIMQAEAEASVVRMRGEAEAF AIGARARA EAEQMAKKA EAFQLYQE  
 AAQLDMLLEKLPQVAEEISGPLTSANKITLVSSSGSGTMGA AKVTGEVLDILTRLPE SVERLTGVSISQVN  
 HKPLRTA

TRTRPLEQKLISEEDLAANDILDYKDDDDKV

**Chromatograms:** [https://cdn.origene.com/chromatograms/mk6198\\_d05.zip](https://cdn.origene.com/chromatograms/mk6198_d05.zip)

**Restriction Sites:** SgfI-MluI

**Cloning Scheme:**



**ACCN:** NM\_005803

**ORF Size:** 1281 bp

**OTI Disclaimer:** The molecular sequence of this clone aligns with the gene accession number as a point of reference only. However, individual transcript sequences of the same gene can differ through naturally occurring variations (e.g. polymorphisms), each with its own valid existence. This clone is substantially in agreement with the reference, but a complete review of all prevailing variants is recommended prior to use. [More info](#)

**OTI Annotation:** This clone was engineered to express the complete ORF with an expression tag. Expression varies depending on the nature of the gene.

**Components:** The ORF clone is ion-exchange column purified and shipped in a 2D barcoded Matrix tube containing 10ug of transfection-ready, dried plasmid DNA (reconstitute with 100 ul of water).

**Reconstitution Method:**

1. Centrifuge at 5,000xg for 5min.
2. Carefully open the tube and add 100ul of sterile water to dissolve the DNA.
3. Close the tube and incubate for 10 minutes at room temperature.
4. Briefly vortex the tube and then do a quick spin (less than 5000xg) to concentrate the liquid at the bottom.
5. Store the suspended plasmid at -20°C. The DNA is stable for at least one year from date of shipping when stored at -20°C.

**Note:** Plasmids are not sterile. For experiments where strict sterility is required, filtration with 0.22um filter is required.

**RefSeq:** [NM\\_005803.4](#)

**RefSeq Size:** 1839 bp

**RefSeq ORF:** 1284 bp

**Locus ID:** 10211

**UniProt ID:** [O75955](#)

**Cytogenetics:** 6p21.33

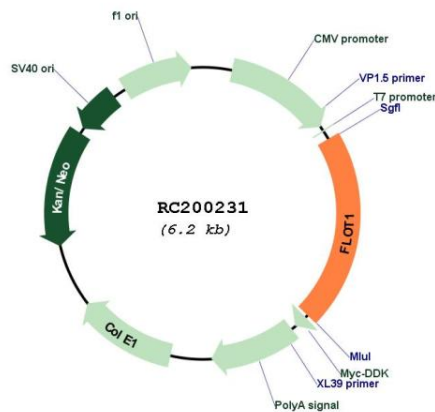
**Domains:** Band\_7, Flotillin

**Protein Pathways:** Insulin signaling pathway

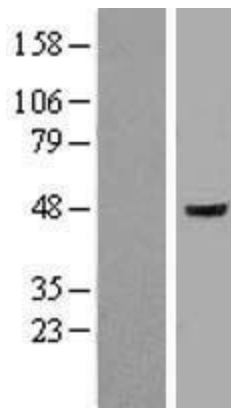
**MW:** 47.4 kDa

**Gene Summary:** This gene encodes an protein that localizes to the caveolae, which are small domains on the inner cell membranes. This protein plays a role in vesicle trafficking and cell morphology. Alternative splicing results in multiple transcript variants. [provided by RefSeq, Jan 2016]

### Product images:



Circular map for RC200231



Western blot validation of overexpression lysate (Cat# [LY401763]) using anti-DDK antibody (Cat# [TA50011-100]). Left: Cell lysates from untransfected HEK293T cells; Right: Cell lysates from HEK293T cells transfected with RC200231 using transfection reagent MegaTran 2.0 (Cat# [TT210002]).



Coomassie blue staining of purified FLOT1 protein (Cat# [TP300231]). The protein was produced from HEK293T cells transfected with FLOT1 cDNA clone (Cat# RC200231) using MegaTran 2.0 (Cat# [TT210002]).