

Product datasheet for **RC200227**

TOLLIP (NM_019009) Human Tagged ORF Clone

Product data:

Product Type:	Expression Plasmids
Product Name:	TOLLIP (NM_019009) Human Tagged ORF Clone
Tag:	Myc-DDK
Symbol:	TOLLIP
Synonyms:	IL-1RAcPIP
Mammalian Cell Selection:	Neomycin
Vector:	pCMV6-Entry (PS100001)
E. coli Selection:	Kanamycin (25 ug/mL)
ORF Nucleotide Sequence:	>RC200227 ORF sequence Red=Cloning site Blue=ORF Green=Tags(s)

TTTTGTAATACGACTCACTATAGGGCGGCCGGAATTCGTCGACTGGATCCGGTACCGAGGAGATCTGCC
GCC**CGATCGCC**

ATGGCGACCACCGTCAGCACTCAGCGGGGCCGGTGTACATCGGTGAGCTCCCGCAGGACTTCTCCGCA
TCACGCCCACACAGCAGCAGCGGCAGGTCCAGCTGGACGCCAGGCGGCCAGCAGCTGCAGTACGGAGG
CGCAGTGGGCACCGTGGGCCGACTGAACATCACGGTGGTACAGGCAAAGTTGGCCAAGAATTACGGCATG
ACCCGCATGGACCCTACTGCCGACTGCGCCTGGGCTACGCGGTGTACGAGACGCCACGGCACACAATG
GCGCCAAGAATCCCCGCTGGAATAAGGTCATCCACTGCACGGTGCCCCAGGCGTGGACTCTTTCTATCT
CGAGATCTTCGATGAGAGAGCCTTCTCCATGGACGACCGATTGCCTGGACCCACATCACCATCCCAGAG
TCCTTGAGGCAGGCAAGGTGGAGGACAAGTGGTACAGCCTGAGCGGGAGGCAGGGGGACGACAAGGAGG
GCATGATCAACCTCGTCATGTCCCTACGCGCTGCTTCCAGCTGCCATGGTATGCCACCCAGCCCGTGGT
CCTGATGCCAACAGTGTACCAGCAGGGCGTTGGCTATGTGCCATCACAGGGATGCCCGCTGTCTGTAGC
CCCGGCATGGTGGCCGTGGCCCTGCCCCGGCCGCGTGAACGCCAGCCCCGCTGTAGCGAGGAGGACC
TGAAAGCCATCCAGGACATGTTCCCAACATGGACCAGGAGGTGATCCGCTCCGTGCTGGAAGCCCAGCG
AGGGAACAAGGATGCCCCATCAACTCCCTGCTGCAGATGGGGGAGGAGCCA

ACGCGTACGCGGCCGCTCGAGCAGAACTCATCTCAGAAGAGGATCTGGCAGCAAATGATATCCTGGATT
ACAAGGATGACGACGATAAGGTTTAA



Protein Sequence: >RC200227 protein sequence
Red=Cloning site Green=Tags(s)

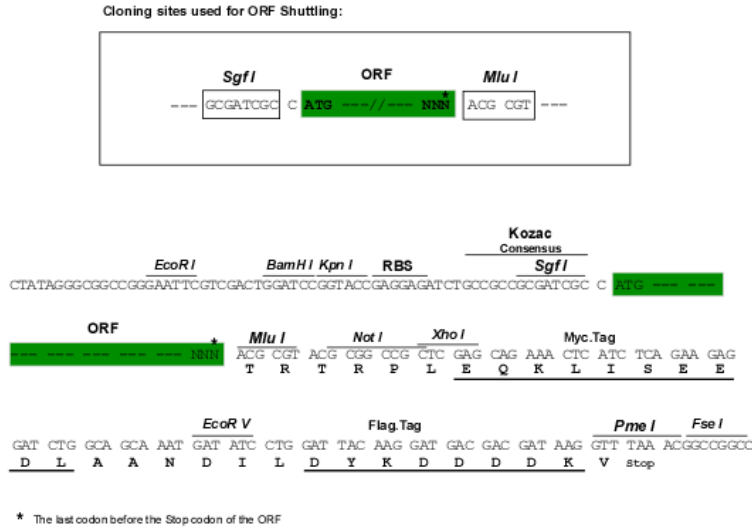
MATTVSTQRGPVYIGELPQDFLRITPTQQQRQVQLDAQAAQQLQYGGAVGTVGRNLITVVQAKLAKNYGM
 TRMDPYCRLRLGYAVYETPTAHNGAKNPRWNKVIHCTVPPGVDSFYLEIFDERAFSMDRIAETHITPE
 SLRQGKVEDKWYLSGRQDDKEGMINLVMSYALLPAAMVMPQPVVLMPTVYQQGVGYVPIITGMPAVCS
 PGMVPVALPPAAVNAQPRCSEEDLKAIQDMFPNMDQEVIRSVLEAQRGNKDAAINSLQMGEPP

TRTRPLEQKLISEEDLAANDILDYKDDDDKV

Chromatograms: https://cdn.origene.com/chromatograms/mk6080_b11.zip

Restriction Sites: SgfI-MluI

Cloning Scheme:



ACCN: NM_019009

ORF Size: 822 bp

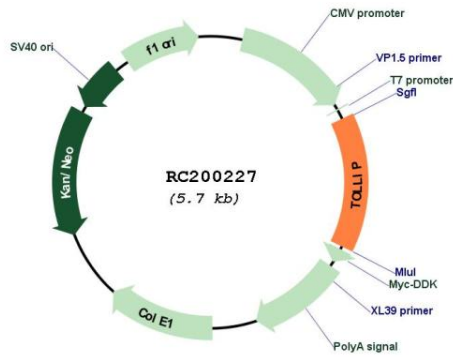
OTI Disclaimer: The molecular sequence of this clone aligns with the gene accession number as a point of reference only. However, individual transcript sequences of the same gene can differ through naturally occurring variations (e.g. polymorphisms), each with its own valid existence. This clone is substantially in agreement with the reference, but a complete review of all prevailing variants is recommended prior to use. [More info](#)

OTI Annotation: This clone was engineered to express the complete ORF with an expression tag. Expression varies depending on the nature of the gene.

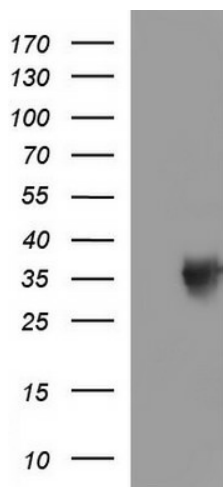
Components: The ORF clone is ion-exchange column purified and shipped in a 2D barcoded Matrix tube containing 10ug of transfection-ready, dried plasmid DNA (reconstitute with 100 ul of water).

Reconstitution Method:	<ol style="list-style-type: none">1. Centrifuge at 5,000xg for 5min.2. Carefully open the tube and add 100ul of sterile water to dissolve the DNA.3. Close the tube and incubate for 10 minutes at room temperature.4. Briefly vortex the tube and then do a quick spin (less than 5000xg) to concentrate the liquid at the bottom.5. Store the suspended plasmid at -20°C. The DNA is stable for at least one year from date of shipping when stored at -20°C.
Note:	Plasmids are not sterile. For experiments where strict sterility is required, filtration with 0.22um filter is required.
RefSeq:	NM_019009.4
RefSeq Size:	3665 bp
RefSeq ORF:	825 bp
Locus ID:	54472
UniProt ID:	Q9H0E2
Cytogenetics:	11p15.5
Domains:	C2, CUE
Protein Families:	Druggable Genome
Protein Pathways:	Toll-like receptor signaling pathway
MW:	30.3 kDa
Gene Summary:	This gene encodes a ubiquitin-binding protein that interacts with several Toll-like receptor (TLR) signaling cascade components. The encoded protein regulates inflammatory signaling and is involved in interleukin-1 receptor trafficking and in the turnover of IL1R-associated kinase. Several transcript variants encoding different isoforms have been found for this gene. [provided by RefSeq, Jan 2016]

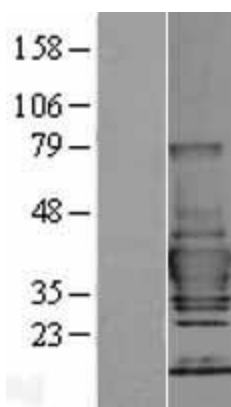
Product images:



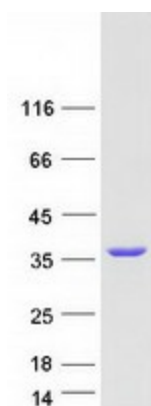
Circular map for RC200227



HEK293T cells were transfected with the pCMV6-ENTRY control (Cat# [PS100001], Left lane) or pCMV6-ENTRY TOLLIP (Cat# RC200227, Right lane) cDNA for 48 hrs and lysed. Equivalent amounts of cell lysates (5 ug per lane) were separated by SDS-PAGE and immunoblotted with anti-TOLLIP (Cat# [TA507039]). Positive lysates [LY402724] (100ug) and [LC402724] (20ug) can be purchased separately from OriGene.



Western blot validation of overexpression lysate (Cat# [LY402724]) using anti-DDK antibody (Cat# [TA50011-100]). Left: Cell lysates from untransfected HEK293T cells; Right: Cell lysates from HEK293T cells transfected with RC200227 using transfection reagent MegaTran 2.0 (Cat# [TT210002]).



Coomassie blue staining of purified TOLLIP protein (Cat# [TP300227]). The protein was produced from HEK293T cells transfected with TOLLIP cDNA clone (Cat# RC200227) using MegaTran 2.0 (Cat# [TT210002]).