

Product datasheet for RC200221

CRABP2 (NM_001878) Human Tagged ORF Clone

Product data:

Product Type: Expression Plasmids

Tag: Myc-DDK

Symbol: CRABP2

Synonyms: CRABP-II; RBP6

Mammalian Cell Selection: Neomycin

Vector: pCMV6-Entry (PS100001)

E. coli Selection: Kanamycin (25 ug/mL)

ORF Nucleotide Sequence: >RC200221 ORF sequence
 Red=Cloning site Blue=ORF Green=Tags(s)

TTTTGTAATACGACTCACTATAGGGCGGCCGGAATTCGTCGACTGGATCCGGTACCGAGGAGATCTGCC
 GCC**CGATCGCC**

ATGCCCAACTTCTCTGGCAACTGGAAAATCATCCGATCGGAACTTCGAGGAATTGCTCAAAGTGCTGG
 GGGTGAATGTGATGCTGAGGAAGATTGCTGTGGCTGCAGCGTCCAAGCCAGCAGTGGAGATCAAACAGGA
 GGGAGACACTTTCTACATCAAACTCCACCACCGTGCACACAGAGATTAACCTCAAGTTGGGGAG
 GAGTTTGAGGAGCAGACTGTGGATGGGAGGCCCTGTAAGAGCCTGGTGAATGGGAGAGTGAGAATAAAA
 TGGTCTGTGAGCAGAAGCTCCTGAAGGGAGAGGGCCCCAAGACCTCGTGGACCAGAGAAGTACCAACGA
 TGGGGAAGTATCCTGACCATGACGGCGGATGACGTTGTGTGCACCAGGGTCTACGTCCGAGAG

ACGCGTACGCGGCCGCTCGAGCAGAACTCATCTCAGAAGAGGATCTGGCAGCAAATGATATCCTGGATT
 ACAAGGATGACGACGATAAGGTTTAA

Protein Sequence: >RC200221 protein sequence
 Red=Cloning site Green=Tags(s)

MPNFSGNWKIIRSENFEELLKVLGVNMLRKIAVAAASKPAVEIKQEGDTFYIKTSTTVRTTEINFKVGE
 EFEEQTVDGRPCKSLVKWESENKMVCEQKLLKGEGPKTSWTREL TNDGELIL TMTADDVVCTRVYVRE

TRTRPLEQKLISEEDLAANDILDYKDDDDKV

Chromatograms: https://cdn.origene.com/chromatograms/mk6053_h10.zip

Restriction Sites: SgfI-MluI



[View online »](#)

Cloning Scheme:



ACCN: NM_001878

ORF Size: 414 bp

OTI Disclaimer: The molecular sequence of this clone aligns with the gene accession number as a point of reference only. However, individual transcript sequences of the same gene can differ through naturally occurring variations (e.g. polymorphisms), each with its own valid existence. This clone is substantially in agreement with the reference, but a complete review of all prevailing variants is recommended prior to use. [More info](#)

OTI Annotation: This clone was engineered to express the complete ORF with an expression tag. Expression varies depending on the nature of the gene.

Components: The ORF clone is ion-exchange column purified and shipped in a 2D barcoded Matrix tube containing 10ug of transfection-ready, dried plasmid DNA (reconstitute with 100 ul of water).

Reconstitution Method:

1. Centrifuge at 5,000xg for 5min.
2. Carefully open the tube and add 100ul of sterile water to dissolve the DNA.
3. Close the tube and incubate for 10 minutes at room temperature.
4. Briefly vortex the tube and then do a quick spin (less than 5000xg) to concentrate the liquid at the bottom.
5. Store the suspended plasmid at -20°C. The DNA is stable for at least one year from date of shipping when stored at -20°C.

Note: Plasmids are not sterile. For experiments where strict sterility is required, filtration with 0.22um filter is required.

RefSeq: [NM_001878.4](#)

RefSeq Size: 1088 bp

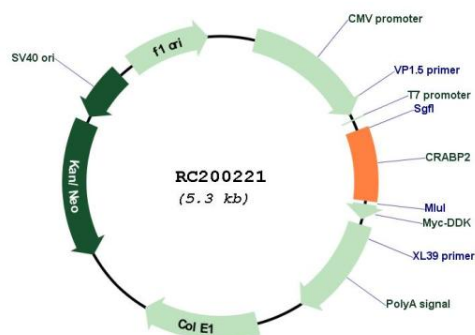
RefSeq ORF: 417 bp
 Locus ID: 1382
 UniProt ID: [P29373](#)
 Cytogenetics: 1q23.1
 Domains: lipocalin

Protein Families: Druggable Genome, Transcription Factors

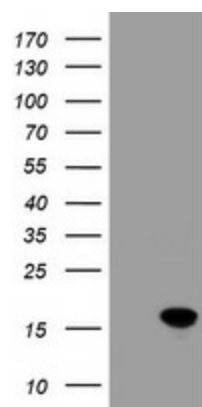
MW: 15.7 kDa

Gene Summary: This gene encodes a member of the retinoic acid (RA, a form of vitamin A) binding protein family and lipocalin/cytosolic fatty-acid binding protein family. The protein is a cytosol-to-nuclear shuttling protein, which facilitates RA binding to its cognate receptor complex and transfer to the nucleus. It is involved in the retinoid signaling pathway, and is associated with increased circulating low-density lipoprotein cholesterol. Alternatively spliced transcript variants encoding the same protein have been found for this gene.[provided by RefSeq, Dec 2010]

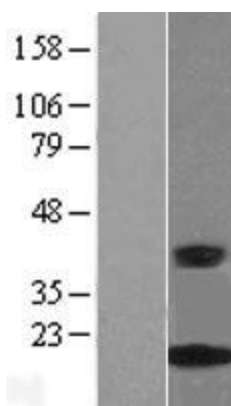
Product images:



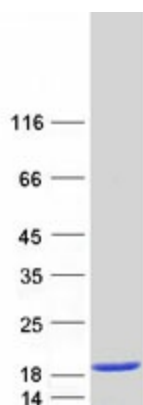
Circular map for RC200221



HEK293T cells were transfected with the pCMV6-ENTRY control (Cat# [PS100001], Left lane) or pCMV6-ENTRY CRABP2 (Cat# RC200221, Right lane) cDNA for 48 hrs and lysed. Equivalent amounts of cell lysates (5 ug per lane) were separated by SDS-PAGE and immunoblotted with anti-CRABP2 (Cat# [TA800069]). Positive lysates [LY419677] (100ug) and [LC419677] (20ug) can be purchased separately from OriGene.



Western blot validation of overexpression lysate (Cat# [LY419677]) using anti-DDK antibody (Cat# [TA50011-100]). Left: Cell lysates from untransfected HEK293T cells; Right: Cell lysates from HEK293T cells transfected with RC200221 using transfection reagent MegaTran 2.0 (Cat# [TT210002]).



Coomassie blue staining of purified CRABP2 protein (Cat# [TP300221]). The protein was produced from HEK293T cells transfected with CRABP2 cDNA clone (Cat# RC200221) using MegaTran 2.0 (Cat# [TT210002]).