

Product datasheet for RC200220

CEE (GET4) (NM_015949) Human Tagged ORF Clone

Product data:

Product Type:	Expression Plasmids
Product Name:	CEE (GET4) (NM_015949) Human Tagged ORF Clone
Tag:	Myc-DDK
Symbol:	CEE
Synonyms:	C7orf20; CEE; CGI-20; TRC35
Mammalian Cell Selection:	Neomycin
Vector:	pCMV6-Entry (PS100001)
E. coli Selection:	Kanamycin (25 ug/mL)
ORF Nucleotide Sequence:	>RC200220 ORF sequence Red=Cloning site Blue=ORF Green=Tags(s)

TTTTGTAATACGACTCACTATAGGGCGGCCGGAATTCGTCGACTGGATCCGGTACCGAGGAGATCTGCC
GCC**CGCATCGCC**

ATGGCGCGCGGGCGGCGATGGCCGAGCAGGAGAGCGCCCGGAACGGCGGCCGCAACCGCGGCGCGTCC
AGCGTGTGGAGGGCAAGCTGCGGCCAGCGTCGAGAAGGGCGACTACTACGAGGCGCACCAGATGTACCG
GACCCTGTTCTTCAGGTACATGTCCAGAGCAAGCACACGGAGGCCCGGGAGCTCATGTACTCGGGAGCC
CTGCTCTTCTTCAGCCATGGCCAGCAAAACAGTGCAGCAGACTTGTCCATGCTGGTCTGGAGTCCCTGG
AGAAGGCGGAAGTGGAGGTGGCTGACGAGCTGCTGGAAAATCTGGCTAAAGTGTTCAGCCTGATGGACCC
CAACTCTCCTGAGCGCGTGACCTTTGTGTCCAGAGCCCTGAAGTGGTCCAGTGGGGGCTCCGGGAAGCTG
GGCCACCCCGGCTGCACCAGCTGCTGGCCCTCACCTGTGGAAGAACAACAACTATTGTGAGTCGAGGT
ATCATTCTGCACTCAGCGGACGGGGAGGGCTGTGCCAATGCTGGTGGAGTATTCCACGTCCCGCGG
CTTCCGACGCGAGGTGGACATGTTTCGTGGCCAGGCCGTGCTACAGTTTCTCTGTTTAAAAAACAAGT
AGCGCATCGGTGGTCTTCACGACGTACACCCAGAAGCACCCGTCCATCGAGGACGGGCTCCGTTTGTGG
AGCCGCTGCTTAACCTCATCTGGTTCCTGCTGCTGGCTGTGGACGGTGGGAAGCTGACGGTGTCACTGT
GCTGTGTGAGCAGTACCAGCCATCCCTCCGGCGGGACCCCATGTACAACGAGTACCTCGACCGCATAGGA
CAGCTGTTCTTCGGCGTCCCGCCAAGCAGACGCTTCTACGGGGCCCTGCTCGGAACCTTCTGACCA
GCCTCATGGGCTCCTCAGAGCAGGAGGATGGGGAGGAGAGCCCAAGCAGCGCAGCCCATCGAGCTGGA
C

ACGCGTACGCGGCCGCTCGAGCAGAACTCATCTCAGAAGAGGATCTGGCAGCAAATGATATCCTGGATT
ACAAGGATGACGACGATAAGGTTTAA



[View online »](#)

Protein Sequence: >RC200220 protein sequence
Red=Cloning site Green=Tags(s)

MAAAAAMAEQESARNGGRNRGGVQRVEGKLRASVEKGDYEAHQMYRTLFFRYMSQSKHTEARELMYSGA
 LLFFSHGQQNSAADLSMLVLESLEKAEVEVADELLENLAKVFLMDPNSPERVTFVSRALKWSSGGSGKL
 GHPRLHQLLALTLWKEQNYCESRYHFLHSADGEGCANMLVEYSTSRGRSEVDMFVAQAVLQFLCLKNKS
 SASVVFTTYTQKHPSIEDGPPFVEPLLNFIFWLLLAVDGGKLTVFTVLCEQYQPSLRRDPMYNEYLDRIG
 QLFFGVPPKQTSYGGLLGNLLTSLMGSSEQEDGEEPSDGSPIELD

TRTRPLEQKLISEEDLAANDILDYKDDDDKV

Chromatograms: https://cdn.origene.com/chromatograms/mk6588_e06.zip

Restriction Sites: SgfI-MluI

Cloning Scheme:



ACCN: NM_015949

ORF Size: 981 bp

OTI Disclaimer: The molecular sequence of this clone aligns with the gene accession number as a point of reference only. However, individual transcript sequences of the same gene can differ through naturally occurring variations (e.g. polymorphisms), each with its own valid existence. This clone is substantially in agreement with the reference, but a complete review of all prevailing variants is recommended prior to use. [More info](#)

OTI Annotation: This clone was engineered to express the complete ORF with an expression tag. Expression varies depending on the nature of the gene.

Components: The ORF clone is ion-exchange column purified and shipped in a 2D barcoded Matrix tube containing 10ug of transfection-ready, dried plasmid DNA (reconstitute with 100 ul of water).

Reconstitution Method:

1. Centrifuge at 5,000xg for 5min.
2. Carefully open the tube and add 100ul of sterile water to dissolve the DNA.
3. Close the tube and incubate for 10 minutes at room temperature.
4. Briefly vortex the tube and then do a quick spin (less than 5000xg) to concentrate the liquid at the bottom.
5. Store the suspended plasmid at -20°C. The DNA is stable for at least one year from date of shipping when stored at -20°C.

RefSeq: [NM_015949.3](#)

RefSeq Size: 2106 bp

RefSeq ORF: 984 bp

Locus ID: 51608

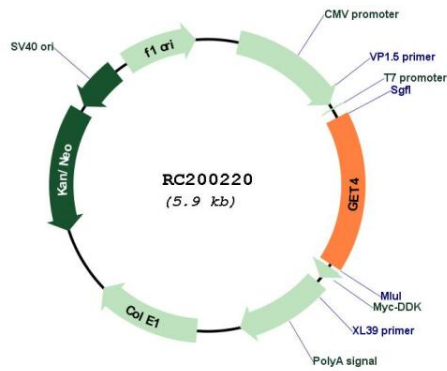
UniProt ID: [Q7L5D6](#)

Cytogenetics: 7p22.3

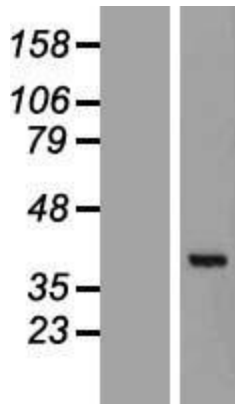
MW: 36.5 kDa

Gene Summary: As part of a cytosolic protein quality control complex, the BAG6/BAT3 complex, maintains misfolded and hydrophobic patches-containing proteins in a soluble state and participates to their proper delivery to the endoplasmic reticulum or alternatively can promote their sorting to the proteasome where they undergo degradation (PubMed:20676083, PubMed:21636303, PubMed:21743475, PubMed:28104892). The BAG6/BAT3 complex is involved in the post-translational delivery of tail-anchored/type II transmembrane proteins to the endoplasmic reticulum membrane. Recruited to ribosomes, it interacts with the transmembrane region of newly synthesized tail-anchored proteins and together with SGTA and ASNA1 mediates their delivery to the endoplasmic reticulum (PubMed:20676083, PubMed:28104892, PubMed:25535373). Client proteins that cannot be properly delivered to the endoplasmic reticulum are ubiquitinated and sorted to the proteasome (PubMed:28104892). Similarly, the BAG6/BAT3 complex also functions as a sorting platform for proteins of the secretory pathway that are mislocalized to the cytosol either delivering them to the proteasome for degradation or to the endoplasmic reticulum (PubMed:21743475). The BAG6/BAT3 complex also plays a role in the endoplasmic reticulum-associated degradation (ERAD), a quality control mechanism that eliminates unwanted proteins of the endoplasmic reticulum through their retrotranslocation to the cytosol and their targeting to the proteasome. It maintains these retrotranslocated proteins in an unfolded yet soluble state condition in the cytosol to ensure their proper delivery to the proteasome (PubMed:21636303).[UniProtKB/Swiss-Prot Function]

Product images:



Circular map for RC200220



Western blot validation of overexpression lysate (Cat# [LY414302]) using anti-DDK antibody (Cat# [TA50011-100]). Left: Cell lysates from untransfected HEK293T cells; Right: Cell lysates from HEK293T cells transfected with RC200220 using transfection reagent MegaTran 2.0 (Cat# [TT210002]).