

Product datasheet for RC200216

DNAJB11 (NM_016306) Human Tagged ORF Clone

Product data:

Product Type:	Expression Plasmids
Product Name:	DNAJB11 (NM_016306) Human Tagged ORF Clone
Tag:	Myc-DDK
Symbol:	DNAJB11
Synonyms:	ABBP-2; ABBP2; Dj-9; DJ9; EDJ; ERdj3; ERj3; ERj3p; PKD6; PRO1080; UNQ537
Mammalian Cell Selection:	Neomycin
Vector:	pCMV6-Entry (PS100001)
E. coli Selection:	Kanamycin (25 ug/mL)
ORF Nucleotide Sequence:	>RC200216 ORF sequence Red=Cloning site Blue=ORF Green=Tags(s)

TTTTGTAATACGACTCACTATAGGGCGCCGGGAATTCGTCGACTGGATCCGGTACCGAGGAGATCTGCC
GCC**CGGATCGCC**

ATGGCTCCGCAGAACCTGAGCACCTTTTGCCTGTTGCTGCTATACCTCATCGGGGCGGTGATTGCCGGAC
GAGATTTCTATAAGATCTTGGGGTGCCTCGAAGTGCCTCTATAAAGGATATTAAGGCTATAGGAA
ACTAGCCCTGCAGCTTCATCCCGACCGGAACCCTGATGATCCACAAGCCAGGAGAAATCCAGGATCTG
GGTGTGCTTATGAGTTCTGTGAGATAGTGAGAAACGGAAACAGTACGATACTTATGGTGAAGAAGGAT
TAAAAGATGGTCACTCAGAGCTCCCATGGAGACATTTTTTACACTTCTTTGGGGATTTTGGTTTCATGTT
TGGAGGAACCCCTCGTCAGCAAGACAGAAATATCCAAGAGGAAGTGATATTATTGTAGATCTAGAAGTC
ACTTTGGAAGAAGTATATGCAGGAAATTTGTGGAAGTAGTTAGAAACAAACCTGTGGCAAGGCAGGCTC
CTGGCAAACGGAAGTGAATTGTGCGCAAGAGATGCGGACCACCCAGCTGGGCCCTGGGCGCTTCCAAT
GACCCAGGAGGTGGTCTGCGACGAATGCCCTAATGTCAAAGTGAATGAAGAACGAACGCTGGAAGTA
GAAATAGAGCCTGGGGTGAAGACGGCATGGAGTACCCCTTTATTGGAGAAGGTGAGCCTCACGTGGATG
GGGAGCCTGGAGATTTACGGTCCGAATCAAAGTTGTCAAGCACCAATATTTGAAAGGAGAGGAGATGA
TTTGTACACAAATGTGACAATCTCATTAGTTGAGTCACTGGTTGGCTTTGAGATGGATATTACTCACTTG
GATGGTCAAGGTACATATTTCCCGGGATAAGATCACCAGGCCAGGCGAAGCTATGGAAGAAAGGGG
AAGGGCTCCCAACTTTGACAACAACAATATCAAGGGCTTTTGATAATCACTTTTGATGTGGATTTTCC
AAAAGAACAGTTAACAGAGGAAGCGAGAGAAGGTATCAAACAGCTACTGAAACAAGGGTCAGTGCAGAAG
GTATACAATGGACTGCAAGGATAT

ACGCGTACGCGGCCGCTCGAGCAGAAACTCATCTCAGAAGAGGATCTGGCAGCAAATGATATCCTGGATT
ACAAGGATGACGACGATAAGGTTTAA



[View online »](#)

Protein Sequence: >RC200216 protein sequence
Red=Cloning site Green=Tags(s)

MAPQNLSTFCLLLLYLIGAVIAGRDFYKILGVPRASIKDIKKAYRKLALQLHPDRNPDDPQAQEKFQDL
 GAAYEVLSDSEKRKQYDTYGEGLKDGHQSSHGDIFSHFFGDFGFMFGGTTPRQQRNIPRGSDIIVDLEV
 TLEEVYAGNFVEVVRNKPVARQAPGKRKCNCRQEMRTTQLGPRGFQMTQEVVCECPNVKLVNEERTLEV
 EIEPGVRDGMETPFIEGEGPHVDGEPGLRFRIVVVKHPVFERRGDDLYNVTISLVESLVGFEMDITHL
 DGHKVVHISRDKITRPGAKLWKKGEGLPNFDNNNIKGSLIITFDVDFPKEQLTEEAREGIKQLLQKQSVQK
 VYNGLQGY

TRTRPLEQKLISEEDLAANDILDYKDDDDKV

Chromatograms: https://cdn.origene.com/chromatograms/mk6150_b02.zip

Restriction Sites: SgfI-MluI

Cloning Scheme:



ACCN: NM_016306

ORF Size: 1074 bp

OTI Disclaimer: The molecular sequence of this clone aligns with the gene accession number as a point of reference only. However, individual transcript sequences of the same gene can differ through naturally occurring variations (e.g. polymorphisms), each with its own valid existence. This clone is substantially in agreement with the reference, but a complete review of all prevailing variants is recommended prior to use. [More info](#)

OTI Annotation: This clone was engineered to express the complete ORF with an expression tag. Expression varies depending on the nature of the gene.

Components: The ORF clone is ion-exchange column purified and shipped in a 2D barcoded Matrix tube containing 10ug of transfection-ready, dried plasmid DNA (reconstitute with 100 ul of water).

Reconstitution Method:

1. Centrifuge at 5,000xg for 5min.
2. Carefully open the tube and add 100ul of sterile water to dissolve the DNA.
3. Close the tube and incubate for 10 minutes at room temperature.
4. Briefly vortex the tube and then do a quick spin (less than 5000xg) to concentrate the liquid at the bottom.
5. Store the suspended plasmid at -20°C. The DNA is stable for at least one year from date of shipping when stored at -20°C.

Note: Plasmids are not sterile. For experiments where strict sterility is required, filtration with 0.22um filter is required.

RefSeq: [NM_016306.6](#)

RefSeq Size: 1698 bp

RefSeq ORF: 1077 bp

Locus ID: 51726

UniProt ID: [Q9UBS4](#)

Cytogenetics: 3q27.3

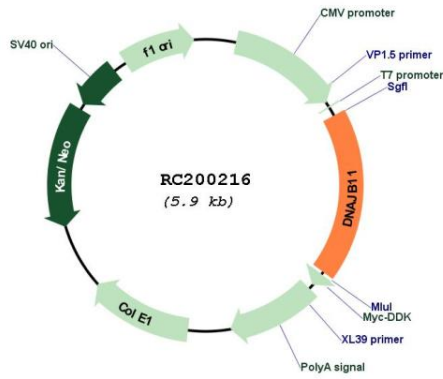
Domains: DnaJ, DnaJ_C

Protein Families: Transmembrane

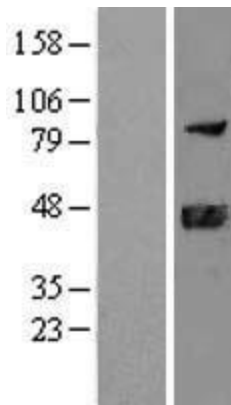
MW: 40.5 kDa

Gene Summary: This gene encodes a soluble glycoprotein of the endoplasmic reticulum (ER) lumen that functions as a co-chaperone of binding immunoglobulin protein, a 70 kilodalton heat shock protein chaperone required for the proper folding and assembly of proteins in the ER. The encoded protein contains a highly conserved J domain of about 70 amino acids with a characteristic His-Pro-Asp (HPD) motif and may regulate the activity of binding immunoglobulin protein by stimulating ATPase activity. [provided by RefSeq, Mar 2014]

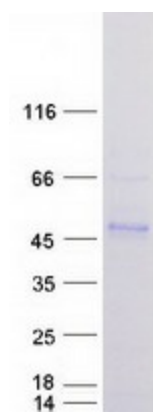
Product images:



Circular map for RC200216



Western blot validation of overexpression lysate (Cat# [LY402537]) using anti-DDK antibody (Cat# [TA50011-100]). Left: Cell lysates from untransfected HEK293T cells; Right: Cell lysates from HEK293T cells transfected with RC200216 using transfection reagent MegaTran 2.0 (Cat# [TT210002]).



Coomassie blue staining of purified DNAJB11 protein (Cat# [TP300216]). The protein was produced from HEK293T cells transfected with DNAJB11 cDNA clone (Cat# RC200216) using MegaTran 2.0 (Cat# [TT210002]).