

Product datasheet for RC200215

RABL4 (IFT27) (NM_006860) Human Tagged ORF Clone

Product data:

Product Type: Expression Plasmids
Product Name: RABL4 (IFT27) (NM_006860) Human Tagged ORF Clone
Tag: Myc-DDK
Symbol: RABL4
Synonyms: BBS19; FAP156; RABL4; RAYL
Mammalian Cell Selection: Neomycin
Vector: pCMV6-Entry (PS100001)
E. coli Selection: Kanamycin (25 ug/mL)
ORF Nucleotide Sequence: >RC200215 ORF sequence
 Red=Cloning site Blue=ORF Green=Tags(s)

TTTTGTAATACGACTCACTATAGGGCGGCCGGAATTCGTCGACTGGATCCGGTACCGAGGAGATCTGCC
 GCC**CGATCGCC**

ATGGTGAAGCTGGCAGCCAAATGCATCCTGGCAGGAGACCCAGCAGTGGGCAAGACCGCCCTGGCACAGA
 TCTTCCGCAGTGATGGAGCCATTTCCAGAAAAGCTACACCCTGACAACAGGAATGGATTTGGTGGTGAA
 GACAGTCCAGTTCCTGACACGGGAGACAGTGTGGAACCTTCATTTTGGACTCTGCTGGCAAGGAGCTG
 TTTTCGGAATGCTGGATAAATTGTGGGAGAGTCCAATGTCTTATGTCTCGTCTATGATGTGACCAATG
 AAGAATCCTTCAACAAGTGCAGCAAGTGGCTGGAGAAGGCTCGGTACAGGCTCCAGGCATCTCTCTCCC
 AGGTGTTTTAGTTGGGAACAAGACAGACCTGGCCGGCAGACGAGCAGTGGACTCAGCTGAGGCCCGGCA
 TGGGCGCTGGGCCAGGGCCTGGAATGTTTTGAAACATCCGTGAAAGAGATGGAAAACCTCGAAGCCCTT
 TCCACTGCCTTGCCAAGCAGTTCACCAGCTGTACCGGGAGAAGGTGGAGTTTTCCGGGCCCTGGCA

ACGCGTACGCGGCCGCTCGAGCAGAACTCATCTCAGAAGAGGATCTGGCAGCAAATGATATCCTGGATT
 ACAAGGATGACGACGATAAGGTTTAA

Protein Sequence: >RC200215 protein sequence
 Red=Cloning site Green=Tags(s)

MVKLAAKCILAGDPAVGKTALAQIFRSDGAHFQKSYTLTTGMDLVVKTVPVPDGTGDSVELFIFDSAGKEL
 FSEMLDKLWESPNVLCVYDVTNEESFNNSKWLEKARSQAPGISLPGVLVGNKTDLAGRRAVDSAEARA
 WALGQGLECFETSVKEMENFEAPFHCLAKQFHQLYREKVEVFRALA

TRTRPLEQKLISEEDLAANDILDYKDDDDKV

Chromatograms: https://cdn.origene.com/chromatograms/mk6386_e10.zip



[View online »](#)

Restriction Sites: SgfI-MluI

Cloning Scheme:



ACCN: NM_006860

ORF Size: 558 bp

OTI Disclaimer: The molecular sequence of this clone aligns with the gene accession number as a point of reference only. However, individual transcript sequences of the same gene can differ through naturally occurring variations (e.g. polymorphisms), each with its own valid existence. This clone is substantially in agreement with the reference, but a complete review of all prevailing variants is recommended prior to use. [More info](#)

OTI Annotation: This clone was engineered to express the complete ORF with an expression tag. Expression varies depending on the nature of the gene.

Components: The ORF clone is ion-exchange column purified and shipped in a 2D barcoded Matrix tube containing 10ug of transfection-ready, dried plasmid DNA (reconstitute with 100 ul of water).

Reconstitution Method:

1. Centrifuge at 5,000xg for 5min.
2. Carefully open the tube and add 100ul of sterile water to dissolve the DNA.
3. Close the tube and incubate for 10 minutes at room temperature.
4. Briefly vortex the tube and then do a quick spin (less than 5000xg) to concentrate the liquid at the bottom.
5. Store the suspended plasmid at -20°C. The DNA is stable for at least one year from date of shipping when stored at -20°C.

RefSeq: [NM_006860.5](#)

RefSeq Size: 1101 bp

RefSeq ORF: 558 bp

Locus ID: 11020

UniProt ID: [Q9BW83](#)

Cytogenetics: 22q12.3

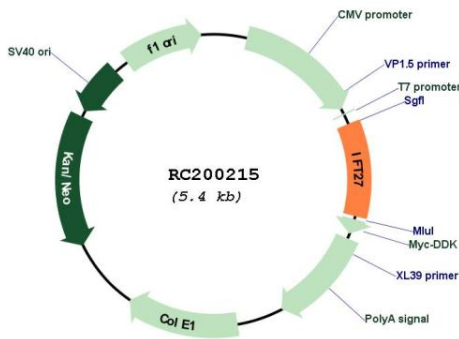
Domains: ras, RAS, RHO, RAB

Protein Families: Druggable Genome

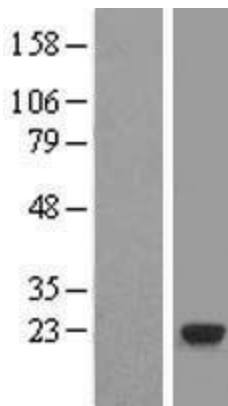
MW: 20.5 kDa

Gene Summary: This gene encodes a GTP-binding protein that is a core component of the intraflagellar transport complex B. Characterization of the similar Chlamydomonas protein indicates a function in cell cycle control. Alternative splicing of this gene results in multiple transcript variants. [provided by RefSeq, Jan 2012]

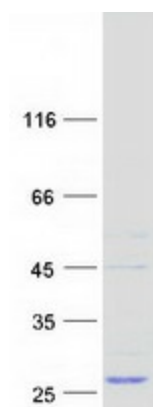
Product images:



Circular map for RC200215



Western blot validation of overexpression lysate (Cat# [LY416367]) using anti-DDK antibody (Cat# [TA50011-100]). Left: Cell lysates from untransfected HEK293T cells; Right: Cell lysates from HEK293T cells transfected with RC200215 using transfection reagent MegaTran 2.0 (Cat# [TT210002]).



Coomassie blue staining of purified IFT27 protein (Cat# [TP300215]). The protein was produced from HEK293T cells transfected with IFT27 cDNA clone (Cat# RC200215) using MegaTran 2.0 (Cat# [TT210002]).