

Product datasheet for RC200212

MTFR1L (NM_019557) Human Tagged ORF Clone

Product data:

Product Type:	Expression Plasmids
Product Name:	MTFR1L (NM_019557) Human Tagged ORF Clone
Tag:	Myc-DDK
Symbol:	MTFR1L
Synonyms:	FAM54B; HYST1888; MST116; MSTP116
Mammalian Cell Selection:	Neomycin
Vector:	pCMV6-Entry (PS100001)
E. coli Selection:	Kanamycin (25 ug/mL)
ORF Nucleotide Sequence:	>RC200212 ORF sequence Red=Cloning site Blue=ORF Green=Tags(s)

TTTTGTAATACGACTCACTATAGGGCGGCCGGAATTCGTCGACTGGATCCGGTACCGAGGAGATCTGCC
GCC**CGGATCGCC**

ATGTCAGGAATGGAAGCCACTGTGACCATCCCAATCTGGCAAACAAGCCACATGGGGCTGCTCGAAGTG
TAGTAAGAAGAATTGGGACCAACCTACCCTTGAAGCCGTGTGCCCGGGCGTCCTTTGAGACCCTGCCAA
CATCTCTGACCTGTGTTTGTAGAGATGTGCCCCAGTCCCTACCCTGGCTGACATCGCCTGGATTGCTGCG
GATGAAGAGGAGACATATGCCCGGGTCAAGAGTGATACGCGCCCCCTGAGGCACACCTGAAACCCAGCC
CTCTGATTGTCATGCAGCGCAATGCCTCTGTTCCCAACCTGCGTGGGTCGAGGAGAGGCTTCTGGCCCT
GAAGAAGCCAGCTCTGCCAGCCCTAAGCCGCACTACTGAGCTGCAGGACGAGCTGAGCCACTTGCGCAGC
CAGATTGCAAAGATAGTGGCAGCTGATGCAGCTTCGGCTTCATTAACGCCAGATTTCTTATCTCCAGGAA
GTTCAAATGTCTCTTCTCCCTTACCTTGTGTTTGGATCCTCATTCCACTCTACAACCTCCTTTGTCTAG
TGACATCACCGAGGAGACAGAGGTGGAGGTCCTGAGCTTCCATCAGTCCCCCTGCTTTGTTCTGCCAGC
CCTGAATGTTGCAAACAGAACAAAGCTGCCTGCAGTTCGTCTGAAGAGGATGACTGCGTCTCTTTGT
CCAAGGCCAGCAGCTTTGCAGACATGATGGGTATCCTGAAGGACTTTCACCGAATGAAACAGAGTCAAGA
TCTGAACCGGAGTTTATTGAAGGAGGAAGACCTGCTGTGCTTATCTCTGAGGTCTAAGGAGGAAGTTT
GCTCTAAAGGAAGAAGATATCAGTAGAAAAGGAAAT

ACGCGTACGCGGGCCGCTCGAGCAGAAACTCATCTCAGAAGAGGATCTGGCAGCAAATGATATCCTGGATT
ACAAGGATGACGACGATAAGGTTTAA



[View online »](#)

Protein Sequence: >RC200212 protein sequence
Red=Cloning site Green=Tags(s)

MSGMEATVTIPIWQNKPHGAARSVVRRIQTNLPLKPCARASFETLPNISDLCLRDVPPVPTLADIAWIAA
 DEEETYARVRS DTRPLRHTWKPSPLIVMQRNASVPNLRGSEERLLALKKPALPALSRTELQDEL SHLRS
 QIAKIVAADAASASLTPDFLSPGSSNVSSPLPCFGSSFHSTTSFVVISDITEETEVEPELPSVPLLC SAS
 PECCCKPEHKAACSSSEEDDCVLSKASSFADMMGILKDFHRMKQSQDLNRSLLKEEDPAVLISEVLRKRF
 ALKEEDISRKGN

TRTRPLEQKLISEEDLAANDILDYKDDDDKV

Chromatograms: https://cdn.origene.com/chromatograms/mk6418_g06.zip

Restriction Sites: SgfI-MluI

Cloning Scheme:



ACCN: NM_019557

ORF Size: 876 bp

OTI Disclaimer: The molecular sequence of this clone aligns with the gene accession number as a point of reference only. However, individual transcript sequences of the same gene can differ through naturally occurring variations (e.g. polymorphisms), each with its own valid existence. This clone is substantially in agreement with the reference, but a complete review of all prevailing variants is recommended prior to use. [More info](#)

OTI Annotation: This clone was engineered to express the complete ORF with an expression tag. Expression varies depending on the nature of the gene.

Components: The ORF clone is ion-exchange column purified and shipped in a 2D barcoded Matrix tube containing 10ug of transfection-ready, dried plasmid DNA (reconstitute with 100 ul of water).

Reconstitution Method:

1. Centrifuge at 5,000xg for 5min.
2. Carefully open the tube and add 100ul of sterile water to dissolve the DNA.
3. Close the tube and incubate for 10 minutes at room temperature.
4. Briefly vortex the tube and then do a quick spin (less than 5000xg) to concentrate the liquid at the bottom.
5. Store the suspended plasmid at -20°C. The DNA is stable for at least one year from date of shipping when stored at -20°C.

RefSeq: [NM_019557.5](#)

RefSeq Size: 2120 bp

RefSeq ORF: 879 bp

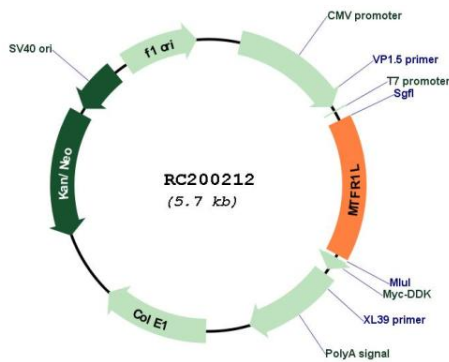
Locus ID: 56181

UniProt ID: [Q9H019](#)

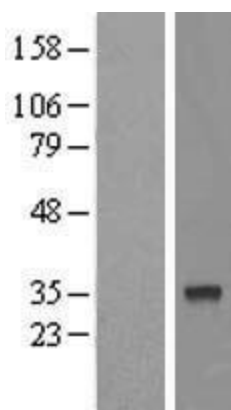
Cytogenetics: 1p36.11

MW: 32 kDa

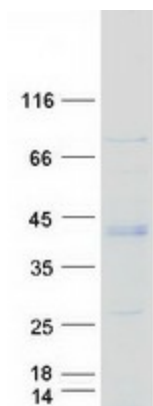
Product images:



Circular map for RC200212



Western blot validation of overexpression lysate (Cat# [LY420465]) using anti-DDK antibody (Cat# [TA50011-100]). Left: Cell lysates from untransfected HEK293T cells; Right: Cell lysates from HEK293T cells transfected with [RC215805] using transfection reagent MegaTran 2.0 (Cat# [TT210002]).



Coomassie blue staining of purified MTFR1L protein (Cat# [TP300212]). The protein was produced from HEK293T cells transfected with MTFR1L cDNA clone (Cat# RC200212) using MegaTran 2.0 (Cat# [TT210002]).