

Product datasheet for **RC200198**

ARL2BP (NM_012106) Human Tagged ORF Clone

Product data:

Product Type:	Expression Plasmids
Product Name:	ARL2BP (NM_012106) Human Tagged ORF Clone
Tag:	Myc-DDK
Symbol:	ARL2BP
Synonyms:	BART; BART1; RP66
Mammalian Cell Selection:	Neomycin
Vector:	pCMV6-Entry (PS100001)
E. coli Selection:	Kanamycin (25 ug/mL)
ORF Nucleotide Sequence:	>RC200198 ORF sequence Red=Cloning site Blue=ORF Green=Tags(s)

TTTTGTAATACGACTCACTATAGGGCGGCCGGAATTCGTCGACTGGATCCGGTACCGAGGAGATCTGCC
GCC**CGATCGCC**

ATGGACGCCTTAGAAGGAGAGAGCTTTGCGCTGTCTTTCTCCTCCGCTCTGATGCAGAATTTGATGCTG
TGGTTGGATATTTAGAGGACATTATCATGGATGACGAGTTCCAGTTATTACAGAGAAATTTATGAATACATT
GTACTACCTGGAGTTTGAAGACACAGAAGAGAATAAACTCATCTACACACCTATTTTAAATGAATACATT
TCTTTGGTAGAAAAATACATTGAAGAACAGCTGCTGCAGCGGATTCCTGAGTTCAACATGGCAGCCTTCA
CCACAACATTACAGCACCATAAGGATGAAGTGGCTGGTGACATATTCGACATGCTGCTCACCTTCACAGA
TTTTCTGGCTTTTAAAGAAATGTTTTTGGACTACAGAGCAGAAAAAGAAGGCCGAGGACTGGACTTAAGC
AGTGGCTTAGTGGTGACTTCATTGTGCAATCATCTTCTCTGCCAGCTCCCAACAATCTGCGGCAC

ACGCGTACGCGGCCGCTCGAGCAGAACTCATCTCAGAAGAGGATCTGGCAGCAAATGATATCCTGGATT
ACAAGGATGACGACGATAAGGTTTAA

Protein Sequence:	>RC200198 protein sequence Red=Cloning site Green=Tags(s)
-------------------	--

MDALEGESFALSFSASDAEFDVVGYLEDIIMDEFQLLQRNFMKYLEFEDTEENKLIYTIPIFNEYI
SLVEKYIEEQLLQRIPEFNMAAFTTTLQHHKDEVAGDIFDMLLTFTDFLAFKEMFLDYRAEKEGRGLDLS
SGLVVTSLCKSSSLPASQNNLRH

TRTRPLEQKLISEEDLAANDILDYKDDDDKV

Chromatograms:	https://cdn.origene.com/chromatograms/mk6392_c08.zip
----------------	---



View online »

Restriction Sites: SgfI-MluI

Cloning Scheme:



ACCN: NM_012106

ORF Size: 489 bp

OTI Disclaimer: The molecular sequence of this clone aligns with the gene accession number as a point of reference only. However, individual transcript sequences of the same gene can differ through naturally occurring variations (e.g. polymorphisms), each with its own valid existence. This clone is substantially in agreement with the reference, but a complete review of all prevailing variants is recommended prior to use. [More info](#)

OTI Annotation: This clone was engineered to express the complete ORF with an expression tag. Expression varies depending on the nature of the gene.

Components: The ORF clone is ion-exchange column purified and shipped in a 2D barcoded Matrix tube containing 10ug of transfection-ready, dried plasmid DNA (reconstitute with 100 ul of water).

Reconstitution Method: 1. Centrifuge at 5,000xg for 5min.
2. Carefully open the tube and add 100ul of sterile water to dissolve the DNA.
3. Close the tube and incubate for 10 minutes at room temperature.
4. Briefly vortex the tube and then do a quick spin (less than 5000xg) to concentrate the liquid at the bottom.
5. Store the suspended plasmid at -20°C. The DNA is stable for at least one year from date of shipping when stored at -20°C.

RefSeq: [NM_012106.4](#)

RefSeq Size: 2100 bp

RefSeq ORF: 492 bp

Locus ID: 23568

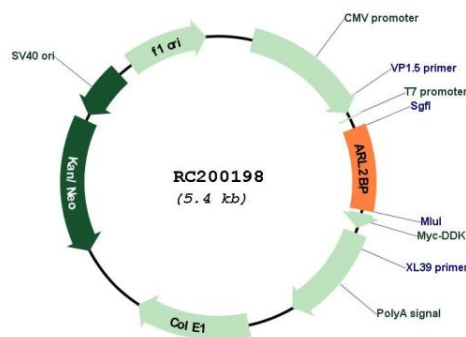
UniProt ID: [Q9Y2Y0](#)

Cytogenetics: 16q13

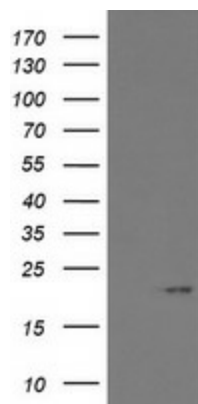
MW: 18.8 kDa

Gene Summary: ADP-ribosylation factor (ARF)-like proteins (ARLs) comprise a functionally distinct group of the ARF family of RAS-related GTPases. The protein encoded by this gene binds to ARL2.GTP with high affinity but does not interact with ARL2.GDP, activated ARF, or RHO proteins. The lack of detectable membrane association of this protein or ARL2 upon activation of ARL2 is suggestive of actions distinct from those of the ARFs. This protein is considered to be the first ARL2-specific effector identified, due to its interaction with ARL2.GTP but lack of ARL2 GTPase-activating protein activity. [provided by RefSeq, Jul 2008]

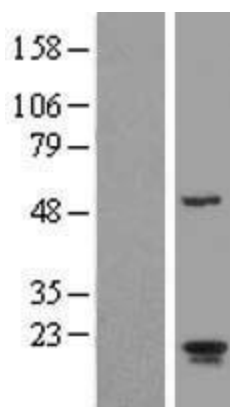
Product images:



Circular map for RC200198



HEK293T cells were transfected with the pCMV6-ENTRY control (Cat# [PS100001], Left lane) or pCMV6-ENTRY ARL2BP (Cat# RC200198, Right lane) cDNA for 48 hrs and lysed. Equivalent amounts of cell lysates (5 ug per lane) were separated by SDS-PAGE and immunoblotted with anti-ARL2BP(Cat# [TA800297]). Positive lysates [LY415976] (100ug) and [LC415976] (20ug) can be purchased separately from OriGene.



Western blot validation of overexpression lysate (Cat# [LY415976]) using anti-DDK antibody (Cat# [TA50011-100]). Left: Cell lysates from untransfected HEK293T cells; Right: Cell lysates from HEK293T cells transfected with RC200198 using transfection reagent MegaTran 2.0 (Cat# [TT210002]).