

## Product datasheet for **RC200196**

### FAIM2 (NM\_012306) Human Tagged ORF Clone

#### Product data:

Product Type:	Expression Plasmids
Product Name:	FAIM2 (NM_012306) Human Tagged ORF Clone
Tag:	Myc-DDK
Symbol:	FAIM2
Synonyms:	LFG; LFG2; NGP35; NMP35; TMBIM2
Mammalian Cell Selection:	Neomycin
Vector:	pCMV6-Entry (PS100001)
E. coli Selection:	Kanamycin (25 ug/mL)
ORF Nucleotide Sequence:	>RC200196 ORF sequence Red=Cloning site Blue=ORF Green=Tags(s)

TTTTGTAATACGACTCACTATAGGGCGCCGGGAATTCGTCGACTGGATCCGGTACCGAGGAGATCTGCC  
GCC**CGATCGCC**

ATGACCCAGGGAAAGCTCTCCGTGGCTAACAAGGCCCTGGGACCGAGGGGCAGCAGCAGGTGCATGGCG  
AGAAGAAGGAGGCTCCAGCAGTGCCTCAGCCCCACCCTCCTATGAGGAAGCCACCTCTGGGAGGGGAT  
GAAGGCAGGGGCTTCCCCCAGCCCCACAGCGGTGCCTCTCCACCCTAGCTGGGCTATGTGGACCC  
AGCAGCAGCTCCAGCTATGACAACGGTTTCCCCACGGAGACCATGAGCTCTCACCCTTTCAGCTGGG  
ATGACCAGAAAGTTCGTCGAGTCTTTGTCAGAAAGGTCTACACCATCCTGCTGATTGCTGCTGGTGAC  
CTTGGCTGTCGTGGCTCTTTACTTTCTGTGACCCTGTCAAGGACTATGTCCAGGCCAACCAGGCTGG  
TACTGGGCATCCTATGCTGTGTTCTTTGCAACCTACCTGACCCTGGCTTGTCTGGACCCAGGAGGC  
ATTTCCCTGGAACCTGATTCTCCTGACCGTCTTTACCCTGTCCATGGCCTACCTCACTGGGATGCTGTC  
CAGCTACTACAACACCACCTCCGTGCTGCTGTGCCTGGGCATCACGGCCCTTGTCTGCCTCTCAGTCACC  
GTCTTCAGCTTCCAGACCAAGTTCGACTTACCTCCTGCCAGGGCGTGTCTTTCGTGCTTCTCATGACTC  
TTTTCTTCAGCGGACTCATCCTGGCCATCCTCCTACCCTTCCAATATGTGCCCTGGCTCCATGCAGTTTA  
TGCAGCACTGGGAGCGGGTGTATTTACATTGTTCTGGCACTTGACACCCAGTTGCTGATGGGTAACCGA  
CGCCACTCGCTGAGCCCTGAGGAGTATATTTTGGAGCCCTCAACATTTACCTAGACATCATCTATATCT  
TCACCTTCTTCTGCAGCTTTTTGGCACTAACCGAGAA

**ACGCGT**ACGCGGCCGCTCGAGCAGAAACTCATCTCAGAAGAGGATCTGGCAGCAAATGATATCCTGGATT  
ACAAGGATGACGACGATAAGGTTTAA



[View online »](#)

**Protein Sequence:** >RC200196 protein sequence  
Red=Cloning site Green=Tags(s)

MTQGKLSVANKAPGTEGQQQVHGEKKEAPAVPSAPPSYEEATSGEGMKAGAFPAPTAVPLHPSWAYVDP  
 SSSSSYDNGFPTGDHELFTTFSWDDQKVRVFRKYYTILLIQLLVTLAVVALFTFCDPVKDYVQANPGW  
 YWASYAVFFATYTLACCSGPRRHFPWNLLITVFTLSMAYLTGMLSSYYNTTSLVLLCLGITALVCLSVT  
 YVFSFQTKFDFTSCQGVLFVLLMTLFFSGLILAILLPFQYVYVPLHAVYAALGAGVFTLFLALDTQLLMGNR  
 RHSLSPEEYIFGALNIYLDIIYIFTFLLQFLGTNRE

TRTRPLEQKLISEEDLAANDILDYKDDDDKV

**Chromatograms:** [https://cdn.origene.com/chromatograms/mk6394\\_g06.zip](https://cdn.origene.com/chromatograms/mk6394_g06.zip)

**Restriction Sites:** SgfI-MluI

**Cloning Scheme:**



**ACCN:** NM\_012306

**ORF Size:** 948 bp

**OTI Disclaimer:** The molecular sequence of this clone aligns with the gene accession number as a point of reference only. However, individual transcript sequences of the same gene can differ through naturally occurring variations (e.g. polymorphisms), each with its own valid existence. This clone is substantially in agreement with the reference, but a complete review of all prevailing variants is recommended prior to use. [More info](#)

**OTI Annotation:** This clone was engineered to express the complete ORF with an expression tag. Expression varies depending on the nature of the gene.

**Components:** The ORF clone is ion-exchange column purified and shipped in a 2D barcoded Matrix tube containing 10ug of transfection-ready, dried plasmid DNA (reconstitute with 100 ul of water).

**Reconstitution Method:**

1. Centrifuge at 5,000xg for 5min.
2. Carefully open the tube and add 100ul of sterile water to dissolve the DNA.
3. Close the tube and incubate for 10 minutes at room temperature.
4. Briefly vortex the tube and then do a quick spin (less than 5000xg) to concentrate the liquid at the bottom.
5. Store the suspended plasmid at -20°C. The DNA is stable for at least one year from date of shipping when stored at -20°C.

**Note:** Plasmids are not sterile. For experiments where strict sterility is required, filtration with 0.22um filter is required.

**RefSeq:** [NM\\_012306.4](#)

**RefSeq Size:** 4744 bp

**RefSeq ORF:** 951 bp

**Locus ID:** 23017

**UniProt ID:** [Q9BWQ8](#)

**Cytogenetics:** 12q13.12

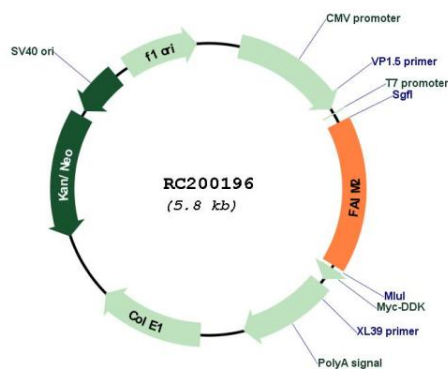
**Domains:** UPF0005

**Protein Families:** Transmembrane

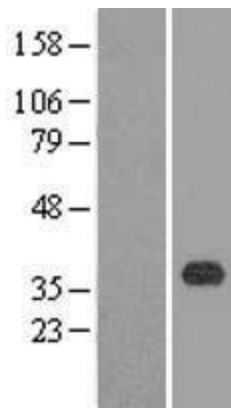
**MW:** 35.1 kDa

**Gene Summary:** Antiapoptotic protein which protects cells uniquely from Fas-induced apoptosis. Regulates Fas-mediated apoptosis in neurons by interfering with caspase-8 activation. May play a role in cerebellar development by affecting cerebellar size, internal granular layer (IGL) thickness, and Purkinje cell (PC) development.[UniProtKB/Swiss-Prot Function]

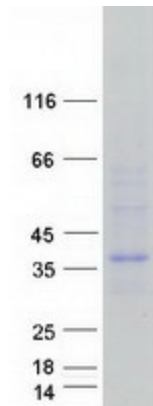
### Product images:



Circular map for RC200196



Western blot validation of overexpression lysate (Cat# [LY415867]) using anti-DDK antibody (Cat# [TA50011-100]). Left: Cell lysates from untransfected HEK293T cells; Right: Cell lysates from HEK293T cells transfected with RC200196 using transfection reagent MegaTran 2.0 (Cat# [TT210002]).



Coomassie blue staining of purified FAIM2 protein (Cat# [TP300196]). The protein was produced from HEK293T cells transfected with FAIM2 cDNA clone (Cat# RC200196) using MegaTran 2.0 (Cat# [TT210002]).