

## Product datasheet for **RC200195**

### **BAMBI (NM\_012342) Human Tagged ORF Clone**

#### Product data:

**Product Type:** Expression Plasmids  
**Product Name:** BAMBI (NM\_012342) Human Tagged ORF Clone  
**Tag:** Myc-DDK  
**Symbol:** BAMBI  
**Synonyms:** NMA  
**Mammalian Cell Selection:** Neomycin  
**Vector:** pCMV6-Entry (PS100001)  
**E. coli Selection:** Kanamycin (25 ug/mL)  
**ORF Nucleotide Sequence:** >RC200195 ORF sequence  
 Red=Cloning site Blue=ORF Green=Tags(s)

TTTTGTAATACGACTCACTATAGGGCGGCCGGAATTCGTCGACTGGATCCGGTACCGAGGAGATCTGCC  
 GCC**CGATCGCC**

ATGGATCGCCACTCCAGCTACATCTTCATCTGGCTGCAGCTGGAGCTCTGCGCCATGGCCGTGCTGCTCA  
 CCAAAGGTGAAATTCGATGCTACTGTGATGCTGCCACTGTGTAGCCACTGGTTATATGTGTAATCTGA  
 GCTCAGCGCCTGCTTCTCTAGACTTCTTGATCCTCAGAACTCAAATCCCCACTACCCATGGCTGCCTG  
 GACTCTCTTGCAAGCACGACAGACATCTGCCAAGCCAAACAGGCCGAAACCACTCTGGCACCACCATAC  
 CCACATTGGAATGCTGTCATGAAGACATGTGAATTACAGAGGGCTGCACGATGTTCTCTCTCTCCAG  
 GGGTGAGGCCTCAGGACAAGGAAACAGGTATCAGCATGATGGTAGCAGAAACCTTATACCAAGGTGCAG  
 GAGCTGACTTCTTCCAAAGAGTTGTGGTCCGGGCAGCGGTCATTGCCGTGCCATTGCTGGAGGGCTGA  
 TTTTAGTGTGCTTATTATGTTGGCCCTGAGGATGCTTCGAAGTAAAAAAGAGGCTGCAGGATCAGCG  
 GCAACAGATGCTCTCCGTTTGCCTACAGCTTTCACGGACACCATTCAAAAAGGGCAGGTTGCAAG  
 TTAGACTTGGAATGCATGGTCCCGTCACTGGGCAGGAACTGCTGTCTGACCTGTGATAAAATGAGAC  
 AAGCAGACCTCAGCAACGATAAGATCCTCTCGTTGTTCACTGGGCATGTACAGTGGGCACGGGAAGCT  
 GGAATTCGTA

**ACGCGT**ACGCGGCCGCTCGAGCAGAACTCATCTCAGAAGAGGATCTGGCAGCAAATGATATCCTGGATT  
 ACAAGGATGACGACGATAAGGTTTAA



[View online »](#)

**Protein Sequence:** >RC200195 protein sequence  
 Red=Cloning site Green=Tags(s)

MDRHSSYIFIWLQLELCAMAVLLTKGEIRCYCDAAHCVATGYMCKSEL SACFSRLLDPQNSNSPLTHGCL  
 DSLASTTDICQAKQARNHSGTTIPTLECCHEDMCNYRGLHDVLSPPRGEASGQGNRYQHDGSRNLITKVQ  
 ELTSSKELWFRAAVIAVPIAGGLILVLLIMLALRMLRSENKRLQDQRQQML SRLHYSFHGHSSKKGQYAK  
 LDLECMVPVSGHENCLTCDKMRQADLSNDKILSLVHWGMYSGHGKLEFV

TRTRPLEQKLISEEDLAANDILDYKDDDDKV

**Chromatograms:** [https://cdn.origene.com/chromatograms/mk6268\\_h04.zip](https://cdn.origene.com/chromatograms/mk6268_h04.zip)

**Restriction Sites:** SgfI-MluI

**Cloning Scheme:**

Cloning sites used for ORF Shuttling:



\* The last codon before the Stop codon of the ORF

**ACCN:** NM\_012342

**ORF Size:** 780 bp

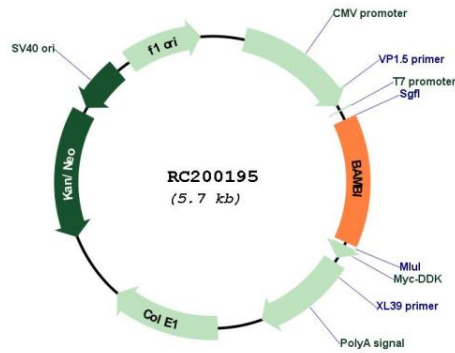
**OTI Disclaimer:** The molecular sequence of this clone aligns with the gene accession number as a point of reference only. However, individual transcript sequences of the same gene can differ through naturally occurring variations (e.g. polymorphisms), each with its own valid existence. This clone is substantially in agreement with the reference, but a complete review of all prevailing variants is recommended prior to use. [More info](#)

**OTI Annotation:** This clone was engineered to express the complete ORF with an expression tag. Expression varies depending on the nature of the gene.

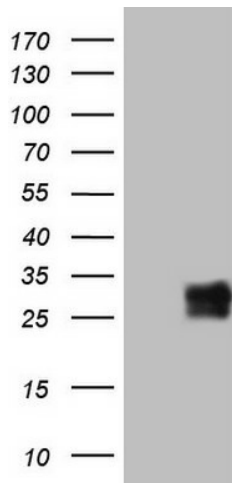
**Components:** The ORF clone is ion-exchange column purified and shipped in a 2D barcoded Matrix tube containing 10ug of transfection-ready, dried plasmid DNA (reconstitute with 100 ul of water).

<b>Reconstitution Method:</b>	<ol style="list-style-type: none"><li>1. Centrifuge at 5,000xg for 5min.</li><li>2. Carefully open the tube and add 100ul of sterile water to dissolve the DNA.</li><li>3. Close the tube and incubate for 10 minutes at room temperature.</li><li>4. Briefly vortex the tube and then do a quick spin (less than 5000xg) to concentrate the liquid at the bottom.</li><li>5. Store the suspended plasmid at -20°C. The DNA is stable for at least one year from date of shipping when stored at -20°C.</li></ol>
<b>Note:</b>	Plasmids are not sterile. For experiments where strict sterility is required, filtration with 0.22um filter is required.
<b>RefSeq:</b>	<a href="#">NM_012342.3</a>
<b>RefSeq Size:</b>	1732 bp
<b>RefSeq ORF:</b>	783 bp
<b>Locus ID:</b>	25805
<b>UniProt ID:</b>	<a href="#">Q13145</a>
<b>Cytogenetics:</b>	10p12.1
<b>Protein Families:</b>	Transmembrane
<b>MW:</b>	29.1 kDa
<b>Gene Summary:</b>	<p>This gene encodes a transmembrane glycoprotein related to the type I receptors of the transforming growth factor-beta (TGF-beta) family, whose members play important roles in signal transduction in many developmental and pathological processes. The encoded protein however is a pseudoreceptor, lacking an intracellular serine/threonine kinase domain required for signaling. Similar proteins in frog, mouse and zebrafish function as negative regulators of TGF-beta, which has led to the suggestion that the encoded protein may function to limit the signaling range of the TGF-beta family during early embryogenesis. [provided by RefSeq, Jul 2008]</p>

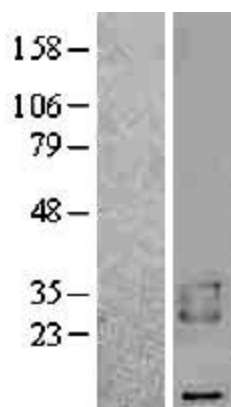
**Product images:**



Circular map for RC200195



HEK293T cells were transfected with the pCMV6-ENTRY control (Cat# [PS100001], Left lane) or pCMV6-ENTRY BAMBI (Cat# RC200195, Right lane) cDNA for 48 hrs and lysed. Equivalent amounts of cell lysates (5 ug per lane) were separated by SDS-PAGE and immunoblotted with anti-BAMBI (Cat# [TA807759])(1:2000). Positive lysates [LY415799] (100ug) and [LC415799] (20ug) can be purchased separately from OriGene.



Western blot validation of overexpression lysate (Cat# [LY415799]) using anti-DDK antibody (Cat# [TA50011-100]). Left: Cell lysates from untransfected HEK293T cells; Right: Cell lysates from HEK293T cells transfected with RC200195 using transfection reagent MegaTran 2.0 (Cat# [TT210002]).