

## Product datasheet for RC200192

### Kallikrein 5 (KLK5) (NM\_001077492) Human Tagged ORF Clone

#### Product data:

Product Type:	Expression Plasmids
Product Name:	Kallikrein 5 (KLK5) (NM_001077492) Human Tagged ORF Clone
Tag:	Myc-DDK
Symbol:	Kallikrein 5
Synonyms:	KLK-L2; KLKL2; SCTE
Mammalian Cell Selection:	Neomycin
Vector:	pCMV6-Entry (PS100001)
E. coli Selection:	Kanamycin (25 ug/mL)
ORF Nucleotide Sequence:	>RC200192 ORF sequence Red=Cloning site Blue=ORF Green=Tags(s)

TTTTGTAATACGACTCACTATAGGGCGGCCGGAATTCGTCGACTGGATCCGGTACCGAGGAGATCTGCC  
GCC**CGGATCGCC**

ATGGCTACAGCAAGACCCCTGGATGTGGTGTCTGTGCTCTGATCACAGCCTTGCTTCTGGGGTCA  
CAGAGCATGTTCTCGCCAACAATGATGTTTCTGTGACCACCCCTCTAACACCGTGCCCTCTGGGAGCAA  
CCAGGACCTGGGAGCTGGGGCCGGGAAGACGCCCGTCCGGATGACAGCAGCAGCCGCATCATCAATGGA  
TCCGACTGCGATATGCACACCCAGCCGTGGCAGGCCGCTGTTGCTAAGGCCAACAGCTCTACTGCC  
GGCGGTGTTGGTGCATCCACAGTGGTGTCTACGGCCGCCACTGCAGGAAGAAAGTTTTTCAGAGTCCG  
TCTCGGCCACTACTCCCTGTACCAGTTTATGAATCTGGGCAGCAGATGTTCCAGGGGTCAAATCCATC  
CCCCACCTGGCTACTCCACCCCTGGCCACTCTAACGACCTCATGCTCATCAAATGAACAGAAGAATTC  
GTCCCACTAAAGATGTCAGACCCATCAACGTCTCCTCTCATTGTCCCTCTGCTGGGACAAAGTGCTGGT  
GTCTGGCTGGGGACAACCAAGAGCCCCAAGTGCACCTCCCTAAGGTCTCCAGTGCTTGAATATCAGC  
GTGCTAAGTCAGAAAAGGTGCGAGGATGTTACCCGAGACAGATAGATGACACCATGTTCTGCGCCGGTG  
ACAAAGCAGGTAGAGACTCCTGCCAGGGTATTCTGGGGGCCCTGTGGTCTGCAATGGCTCCCTGCAGGG  
ACTCGTGTCTGGGAGATTACCCTGTGCCGGCCCAACAGACCGGGTGTCTACACGAACCTCTGCAAG  
TTCACCAAGTGGATCCAGGAAACCATCCAGGCCAACTCC

**ACGCGT**ACGCGGCCGCTCGAGCAGAAACTCATCTCAGAAGAGGATCTGGCAGCAAATGATATCCTGGATT  
ACAAGGATGACGACGATAAGGTTTAA



[View online »](#)

**Protein Sequence:** >RC200192 protein sequence  
Red=Cloning site Green=Tags(s)

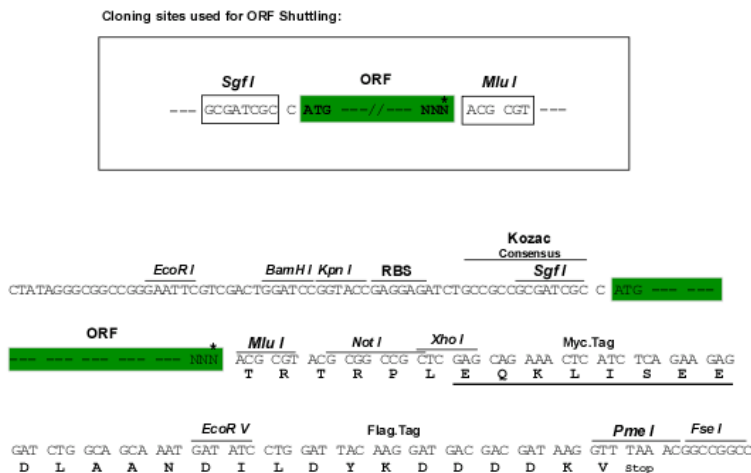
MATARPPMWWL CALITALLLVTEHVL ANNDVSCDHPSNTVP SGNQDLGAGAGEDARSDDSSSR IING  
SDCDMHTQPWQAALLLRPNQL YCGAVL VHPQWLLTAAHCRKVKVFRVRLGHYSLSPVYESGQMFQGVKSI  
PHPGYSHPGHSNDLMLIKLNRRI RPTKDV RPINVS SHCPSAGTKCLVSGWGTTKSPQVHF PKVLQCLNIS  
VLSQKRCE DAYPRQIDDTMFCAGDKAGR DSCQGD SGGPVV CNGSLQGLVSWGDYPCARP NRP GVYTNLCK  
FTKWIQETIQANS

TRTRPLEQKLISEEDLAANDILDYKDDDDKV

**Chromatograms:** [https://cdn.origene.com/chromatograms/mk6406\\_b06.zip](https://cdn.origene.com/chromatograms/mk6406_b06.zip)

**Restriction Sites:** SgfI-MluI

**Cloning Scheme:**



**ACCN:** NM\_001077492

**ORF Size:** 879 bp

**OTI Disclaimer:** The molecular sequence of this clone aligns with the gene accession number as a point of reference only. However, individual transcript sequences of the same gene can differ through naturally occurring variations (e.g. polymorphisms), each with its own valid existence. This clone is substantially in agreement with the reference, but a complete review of all prevailing variants is recommended prior to use. [More info](#)

**OTI Annotation:** This clone was engineered to express the complete ORF with an expression tag. Expression varies depending on the nature of the gene.

**Components:** The ORF clone is ion-exchange column purified and shipped in a 2D barcoded Matrix tube containing 10ug of transfection-ready, dried plasmid DNA (reconstitute with 100 ul of water).

**Reconstitution Method:**

1. Centrifuge at 5,000xg for 5min.
2. Carefully open the tube and add 100ul of sterile water to dissolve the DNA.
3. Close the tube and incubate for 10 minutes at room temperature.
4. Briefly vortex the tube and then do a quick spin (less than 5000xg) to concentrate the liquid at the bottom.
5. Store the suspended plasmid at -20°C. The DNA is stable for at least one year from date of shipping when stored at -20°C.

**RefSeq:** [NM\\_001077492.2](#)

**RefSeq Size:** 1367 bp

**RefSeq ORF:** 882 bp

**Locus ID:** 25818

**UniProt ID:** [Q9Y337](#)

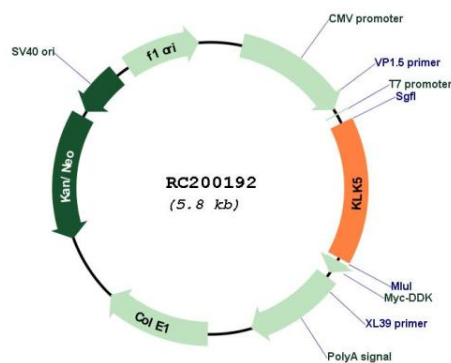
**Cytogenetics:** 19q13.41

**Protein Families:** Druggable Genome, Protease, Secreted Protein, Transmembrane

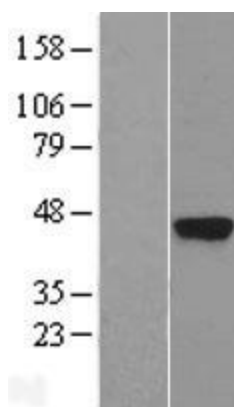
**MW:** 32 kDa

**Gene Summary:** Kallikreins are a subgroup of serine proteases having diverse physiological functions. Growing evidence suggests that many kallikreins are implicated in carcinogenesis and some have potential as novel cancer and other disease biomarkers. This gene is one of the fifteen kallikrein subfamily members located in a cluster on chromosome 19. Its expression is up-regulated by estrogens and progestins. The encoded protein is secreted and may be involved in desquamation in the epidermis. Alternative splicing results in multiple transcript variants encoding the same protein. [provided by RefSeq, Jul 2008]

### Product images:



Circular map for RC200192



Western blot validation of overexpression lysate (Cat# [LY421442]) using anti-DDK antibody (Cat# [TA50011-100]). Left: Cell lysates from untransfected HEK293T cells; Right: Cell lysates from HEK293T cells transfected with [RC217479] using transfection reagent MegaTran 2.0 (Cat# [TT210002]).