

Product datasheet for **RC200188**

SINHCAF (NM_021238) Human Tagged ORF Clone

Product data:

Product Type:	Expression Plasmids
Product Name:	SINHCAF (NM_021238) Human Tagged ORF Clone
Tag:	Myc-DDK
Symbol:	SINHCAF
Synonyms:	C12orf14; FAM60A; L4; TERA
Mammalian Cell Selection:	Neomycin
Vector:	pCMV6-Entry (PS100001)
E. coli Selection:	Kanamycin (25 ug/mL)
ORF Nucleotide Sequence:	>RC200188 ORF sequence Red=Cloning site Blue=ORF Green=Tags(s)

TTTTGTAATACGACTCACTATAGGGCGCCGGGAATTCGTCGACTGGATCCGGTACCGAGGAGATCTGCC
GCC**CGATCGCC**

ATGTTTGGTTTTCAAGCCAAAGATGTACCGAAGTATAGAGGGCTGCTGTATTTGCAGAGCTAAGTCTT
CCAGTTCTCGATTCACTGACAGTAAACGCTATGAAAAGGACTTCCAGAGCTGTTTGGATTGCATGAGAC
TCGTTCCAGGAGACATCTGCAATGCCTGTGCTGCTTGTGAAAAGATGGAAGAAGTTGCCAGCAGGATCA
AAAAAAAAGTGAATCATGTGGTAGATGCAAGGGCTGGACCCAGTCTAAAGACTACATTGAAACCAAGA
AAGTAAAAGTCTATCTGGGAACAGGATAAAAAGCAACCAGATCAGTAACTGCAGAAGGAATTTAAACG
TCATAATTCTGATGCTCACAGTACCACCTCAAGTGCCTCCCAGCTCAATCTCCTTGTACAGTAACCG
TCAGATGACGGCTCAGATACAGAGATGGCTTCTGGTTCTAACAGAACACCCAGTTTTTTTCTTTTAGATC
TCACTTACTGGAAAAGACAGAAGATATGTTGTGGGATCATCTATAAAGGCCGTTTTGGGGAAGTCTCAT
TGACACACATCTTTCAAGCCTTGCTGCAGCAATAAGAAAAGCAGCTGCTGAGAAGCCAGAGGAGCAGGGG
CCAGAGCCTCTGCCATCTCCACTCAGGAGTGG

ACGCGTACGCGGGCCGCTCGAGCAGAAAAGTCTCAGAAAGAGGATCTGGCAGCAAATGATATCTGGATT
ACAAGGATGACGACGATAAGGTTTAA



[View online »](#)

Reconstitution Method:

1. Centrifuge at 5,000xg for 5min.
2. Carefully open the tube and add 100ul of sterile water to dissolve the DNA.
3. Close the tube and incubate for 10 minutes at room temperature.
4. Briefly vortex the tube and then do a quick spin (less than 5000xg) to concentrate the liquid at the bottom.
5. Store the suspended plasmid at -20°C. The DNA is stable for at least one year from date of shipping when stored at -20°C.

RefSeq: [NM_021238.2](#)

RefSeq Size: 3130 bp

RefSeq ORF: 666 bp

Locus ID: 58516

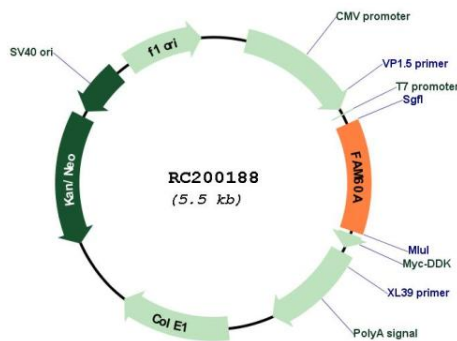
UniProt ID: [Q9NP50](#)

Cytogenetics: 12p11.21

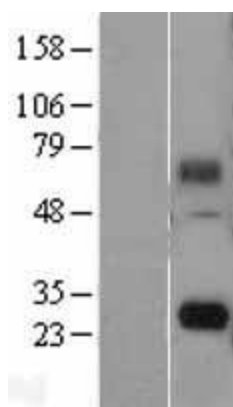
MW: 24.9 kDa

Gene Summary: Subunit of the Sin3 deacetylase complex (Sin3/HDAC), this subunit is important for the repression of genes encoding components of the TGF-beta signaling pathway (PubMed:22865885, PubMed:22984288). Core component of a SIN3A complex (composed of at least SINHCAF, SIN3A, HDAC1, SAP30, RBBP4, OGT and TET1) present in embryonic stem (ES) cells. Promotes the stability of SIN3A and its presence on chromatin and is essential for maintaining the potential of ES cells to proliferate rapidly, while ensuring a short G1-phase of the cell cycle, thereby preventing premature lineage priming (By similarity).[UniProtKB/Swiss-Prot Function]

Product images:



Circular map for RC200188



Western blot validation of overexpression lysate (Cat# [LY427713]) using anti-DDK antibody (Cat# [TA50011-100]). Left: Cell lysates from untransfected HEK293T cells; Right: Cell lysates from HEK293T cells transfected with [RC227918] using transfection reagent MegaTran 2.0 (Cat# [TT210002]).