

Product datasheet for **RC200180**

KCTD5 (NM_018992) Human Tagged ORF Clone

Product data:

Product Type:	Expression Plasmids
Product Name:	KCTD5 (NM_018992) Human Tagged ORF Clone
Tag:	Myc-DDK
Symbol:	KCTD5
Mammalian Cell Selection:	Neomycin
Vector:	pCMV6-Entry (PS100001)
E. coli Selection:	Kanamycin (25 ug/mL)
ORF Nucleotide Sequence:	>RC200180 ORF sequence Red=Cloning site Blue=ORF Green=Tags(s)

TTTTGTAATACGACTCACTATAGGGCGGCCGGAATTCGTCGACTGGATCCGGTACCGAGGAGATCTGCC
GCC**CGATCGCC**

ATGGCGGAGAATCACTGCGAGCTCCTGTCGCCGGCCCGGGCGGCATCGGGCGGGGCTGGGGGGCGGCC
TGTGCCGCGCTGCAGCGCTGGGCTCGGCGCCCTGGCCAGCGCCCTGGCAGCGTGTCCAAGTGGGTCCG
ACTCAACGTCGGCGGCACCTACTTCCTCACCCTCGGCAGACCCTGTGCCGGGACCCGAAATCCTTCCTG
TACCGCTTATGCCAGGCCGATCCCGACCTGGACTCAGACAAGGATGAAACAGGCGCCTATTTAATCGACA
GAGACCCACCTACTTTGGGCTGTGCTGAACCTACCTGAGACACGGCAAGCTGGTGATTAACAAAGACCT
CGCGGAGGAAGGAGTGTGGAGGAAGCAGAATTTTACAATATCACCTCATTAAATAAACTTGTAAGGAC
AAAATTAGAGAACGAGACAGCAAAACATCGCAGGTGCCTGTGAAGCATGTGTACCGTGTGCTGCAGTGCC
AGGAGGAGGAGCTCACGCAGATGGTGTCCACCATGTCCGACGGCTGGAAGTTCGAGCAGTTGGTCAGCAT
CGGCTCCTCTTACAACATATGGGAACGAAGACCAAGCCGAGTTCCTCTGTGTGGTGTCCAAGGAGCTGCAC
AACACCCCGTACGGTACGGCCAGCGAGCCAGCGAGAAGCCAAGATTTGCAAGAACGAGGCTCAAGGA
TG

ACGCGTACGCGGCCGCTCGAGCAGAACTCATCTCAGAAGAGGATCTGGCAGCAAATGATATCCTGGATT
ACAAGGATGACGACGATAAGGTTTAA



[View online »](#)

Protein Sequence: >RC200180 protein sequence
 Red=Cloning site Green=Tags(s)

MAENHCELLSPARGGIGAGLGGGLCRRC SAGLGALAQRP GSVSKWVRLNVGGTYFLTTRQTLCRDPKSF L
 YRLCQADPDLDSKDETGAYLIDRDPT YFGPVLNYLRHGKLVINKDLAEEGVLEEAEFYNITSLIKLVKD
 KIRERDSKTSQVPVKHVYRVLQCQEEEL TQMVSTMSDGWKFEQLV SIGSSYNYGNEDQAEFLCVVSKELH
 NTPYGTASEPSEKAKILQERGSRM

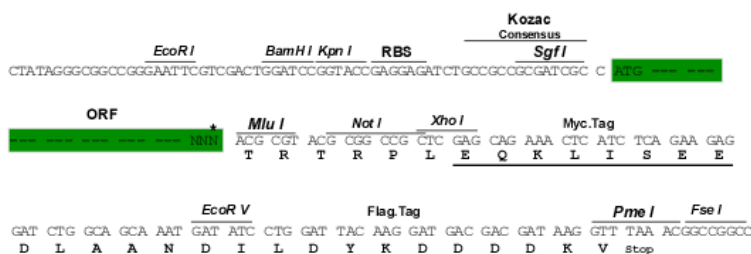
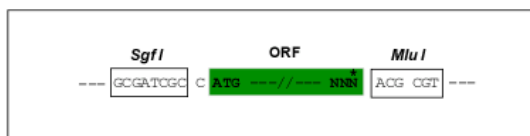
TRTRPLEQKLI SEEDLAANDILDYKDDDDKV

Chromatograms: https://cdn.origene.com/chromatograms/mk6075_g05.zip

Restriction Sites: SgfI-MluI

Cloning Scheme:

Cloning sites used for ORF Shuttling:



* The last codon before the Stop codon of the ORF

ACCN: NM_018992

ORF Size: 702 bp

OTI Disclaimer: The molecular sequence of this clone aligns with the gene accession number as a point of reference only. However, individual transcript sequences of the same gene can differ through naturally occurring variations (e.g. polymorphisms), each with its own valid existence. This clone is substantially in agreement with the reference, but a complete review of all prevailing variants is recommended prior to use. [More info](#)

OTI Annotation: This clone was engineered to express the complete ORF with an expression tag. Expression varies depending on the nature of the gene.

Components: The ORF clone is ion-exchange column purified and shipped in a 2D barcoded Matrix tube containing 10ug of transfection-ready, dried plasmid DNA (reconstitute with 100 ul of water).

Reconstitution Method:

1. Centrifuge at 5,000xg for 5min.
2. Carefully open the tube and add 100ul of sterile water to dissolve the DNA.
3. Close the tube and incubate for 10 minutes at room temperature.
4. Briefly vortex the tube and then do a quick spin (less than 5000xg) to concentrate the liquid at the bottom.
5. Store the suspended plasmid at -20°C. The DNA is stable for at least one year from date of shipping when stored at -20°C.

RefSeq: [NM_018992.4](#)

RefSeq Size: 2479 bp

RefSeq ORF: 705 bp

Locus ID: 54442

UniProt ID: [Q9NXV2](#)

Cytogenetics: 16p13.3

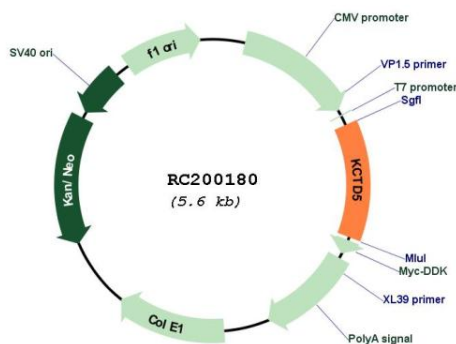
Domains: BTB, K_tetra

Protein Families: Ion Channels: Other

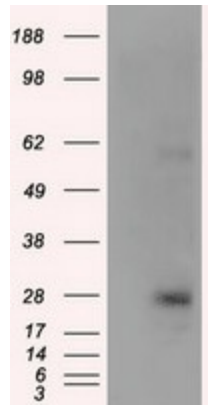
MW: 26.1 kDa

Gene Summary: Its interaction with CUL3 suggests that it may act as a substrate adapter in some E3 ligase complex (PubMed:18573101). Does not affect the function of Kv channel Kv2.1/KCNB1, Kv1.2/KCNA2, Kv4.2/KCND2 and Kv3.4/KCNC4 (PubMed:19361449).[UniProtKB/Swiss-Prot Function]

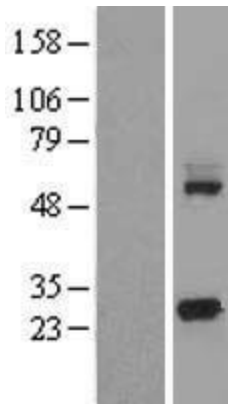
Product images:



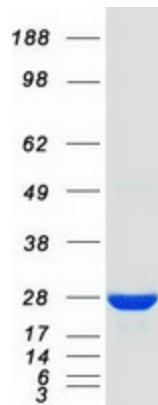
Circular map for RC200180



HEK293T cells were transfected with the pCMV6-ENTRY control (Cat# [PS100001], Left lane) or pCMV6-ENTRY KCTD5 (Cat# RC200180, Right lane) cDNA for 48 hrs and lysed. Equivalent amounts of cell lysates (5 ug per lane) were separated by SDS-PAGE and immunoblotted with anti-KCTD5 (Cat# [TA501035]). Positive lysates [LY412830] (100ug) and [LC412830] (20ug) can be purchased separately from OriGene.



Western blot validation of overexpression lysate (Cat# [LY412830]) using anti-DDK antibody (Cat# [TA50011-100]). Left: Cell lysates from untransfected HEK293T cells; Right: Cell lysates from HEK293T cells transfected with RC200180 using transfection reagent MegaTran 2.0 (Cat# [TT210002]).



Coomassie blue staining of purified KCTD5 protein (Cat# [TP300180]). The protein was produced from HEK293T cells transfected with KCTD5 cDNA clone (Cat# RC200180) using MegaTran 2.0 (Cat# [TT210002]).