

Product datasheet for **RC200175**

DUS2L (DUS2) (NM_017803) Human Tagged ORF Clone

Product data:

Product Type:	Expression Plasmids
Product Name:	DUS2L (DUS2) (NM_017803) Human Tagged ORF Clone
Tag:	Myc-DDK
Symbol:	DUS2L
Synonyms:	DUS2L; SMM1; URLC8
Mammalian Cell Selection:	Neomycin
Vector:	pCMV6-Entry (PS100001)
E. coli Selection:	Kanamycin (25 ug/mL)



[View online »](#)

ORF Nucleotide Sequence:

>RC200175 ORF sequence
 Red=Cloning site Blue=ORF Green=Tags(s)

TTTTGTAATACGACTCACTATAGGGCGGCCGGAATTCGTCGACTGGATCCGGTACCGAGGAGATCTGCC
 GCC**CGCATCGCC**

ATGATTTTGAATAGCCTCTCTGTGTACCATAATAAGCTAATCCTGGCCCAATGGTTCGGGTAGGGA
 CTCTTCCAATGAGGCTGCTGGCCCTGGATTATGGAGCGGACATTGTTACTGTGAGGAGCTGATCGACCT
 CAAGATGATTCAGTGCAAGAGAGTTGTTAATGAGGTGCTCAGCACAGTGGACTTTGTCGCCCTGATGAT
 CGAGTTGTCTCCGCACCTGTGAAAGAGAGCAGAACAGGGTGGTCTCCAGATGGGGACTTCAGACGCAG
 AGCGAGCCCTTGCTGTGGCCAGGCTTGTAGAAAATGATGTGGCTGGTATTGATGTCAACATGGGCTGTCC
 AAAACAATATTCCACCAAGGGAGGAATGGGAGCTGCCCTGCTGTCAGACCCTGACAAGATTGAGAAGATC
 CTCAGCACTCTTGTTAAAGGGACACGCAGACCTGTGACCTGCAAGATTGCATCTGCCATCGCTAGAAG
 ATACCTGAGCCTTGTGAAGCGGATAGAGAGGACTGGCATTGCTGCCATCGCAGTTCATGGGAGGAAGCG
 GGAGGAGCGACCTCAGCATCCTGTCAGCTGTGAAGTCATCAAAGCCATTGCTGATACCCTCTCCATTCT
 GTCATAGCCAACGGAGGATCTCATGACCACATCCAACAGTATTCCGACATAGAGGACTTTGACAAGCCA
 CGGCAGCCTCTCCGTGATGGTGGCCCGAGCAGCCATGTGGAACCCATCTATCTTCTCAAGGAGGGTCT
 GCGGCCCTGGAGGAGTGCAGAAAATACATCAGATACGCGGTGACGATGACAACCACTACACCAAC
 ACCAAGTACTGCTTGTGCCAGATGCTACGAGAACAGCTGGAGTCGCCAGGGAAGGTTGCTCCATGCTG
 CCCAGTCTCCCGGAAATTTGTGAGGCCCTTGGCCTTGGTGCCTTCTATGAGGAGACCACAGGAGCT
 GGATGCCAGCAGGCCAGGCTCTCAGCCAAGACTTCAGAGCAGACAGGGGAGCCAGCTGAAGATACCTCT
 GGTGTCATTAAGATGGCTGTCAAGTTTGACCGGAGAGCATAACCCAGCCAGATCACCCCTAAGATGTGCC
 TACTAGAGTGGTCCGGAGGGAGAAGTTGGCACAGCCTGTGTATGAAACGGTTCAACGCCCTAGATCG
 CCTGTTCTCCTCTATTGTCACCGTTGCTGAACAAAAGTATCAGTCTACCTTGTGGGACAAGTCCAAGAAA
 CTGGCGGAGCAGGCTGCAGCCATCGTCTGTCTGCGGAGCCAGGGCCTCCCTGAGGGTCCGGTGGGTGAGG
 AGAGCCCTTCTTGCACAAGCGAAAGAGGGAGGCTCCTGACCAAGACCCTGGGGGCCAGAGCTCAGGA
 GCTAGCACAACCTGGGGATCTGTGCAAGAAGCCCTTTGTGGCCTTGGGAAGTGGTGAAGAAAGCCCTG
 GAAGGCTGG

ACGCGTACGCGGCCGCTCGAGCAGAAACTCATCTCAGAAGAGGATCTGGCAGCAAATGATATCTGGATT
 ACAAGGATGACGACGATAAGGTTTAA

Protein Sequence:

>RC200175 protein sequence
 Red=Cloning site Green=Tags(s)

MILNLSLCYHNKLI LAPMVRVGTLP MRLALDYGADIVYCEELIDLKMIQCKRVVNEVLSTVDFVAPDD
 RVVVRTCEREQNRVVFQMGTSDAERALAVARLVENDVAGIDVNMGC PKQYSTKGGMGAALLSDPKIEKI
 LSTLVKGTTRRPVTCKIRILPSLEDTLSLVKRIERTGIAAIAVHGRKREERPQHPV SCEVIKAIADTLSIP
 VIANGGSHDHIQQYSDIEDFRQATAASSVMVARAAMWNPSIFLKEGLRPLEEVMQKYIRYAVQYDNHYTN
 TKYCLCQMLREQL ESPQGRLLHAAQSSREICEAFGLGAFYEETTQELDAQQARLSAKTSEQTGEP AEDTS
 GVIKMAVKFDRRAYPAQITPKMCLLEWCRREKLAQPVYETVQRPLDR LFS SIVTVAEQKYQSTLWDKSKK
 LAEQAAAIVCLRSQGLPEGRLGEESPSLHKRKRREAPDQDPGGPRAQELAQPGDLCKKPFVALGSGEESPL
 EGW

TRTRPLEQKLISEEDLAANDILDYKDDDDKV

Chromatograms:

https://cdn.origene.com/chromatograms/mk6153_b08.zip

Restriction Sites:

Sgfl-Mlul

Cloning Scheme:


ACCN: NM_017803

ORF Size: 1479 bp

OTI Disclaimer: The molecular sequence of this clone aligns with the gene accession number as a point of reference only. However, individual transcript sequences of the same gene can differ through naturally occurring variations (e.g. polymorphisms), each with its own valid existence. This clone is substantially in agreement with the reference, but a complete review of all prevailing variants is recommended prior to use. [More info](#)

OTI Annotation: This clone was engineered to express the complete ORF with an expression tag. Expression varies depending on the nature of the gene.

Components: The ORF clone is ion-exchange column purified and shipped in a 2D barcoded Matrix tube containing 10ug of transfection-ready, dried plasmid DNA (reconstitute with 100 ul of water).

- Reconstitution Method:**
1. Centrifuge at 5,000xg for 5min.
 2. Carefully open the tube and add 100ul of sterile water to dissolve the DNA.
 3. Close the tube and incubate for 10 minutes at room temperature.
 4. Briefly vortex the tube and then do a quick spin (less than 5000xg) to concentrate the liquid at the bottom.
 5. Store the suspended plasmid at -20°C. The DNA is stable for at least one year from date of shipping when stored at -20°C.

RefSeq: [NM_017803.5](#)

RefSeq Size: 2342 bp

RefSeq ORF: 1482 bp

Locus ID: 54920

UniProt ID: [Q9NX74](#)

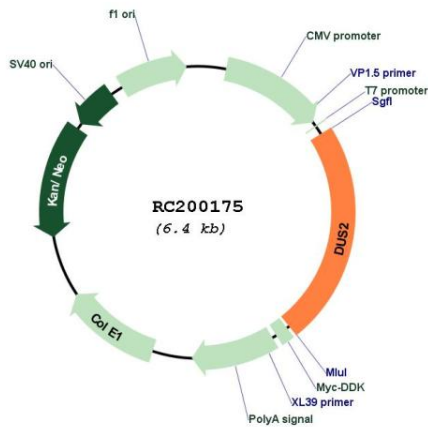
Cytogenetics: 16q22.1

Domains: DSRM, Dus

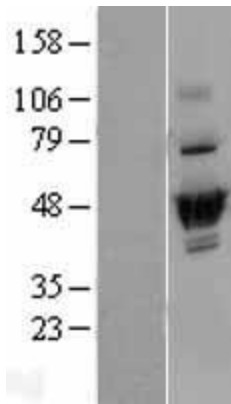
MW: 55.1 kDa

Gene Summary: This gene encodes a cytoplasmic protein that catalyzes the conversion of uridine residues to dihydrouridine in the D-loop of tRNA. The resulting modified bases confer enhanced regional flexibility to tRNA. The encoded protein may increase the rate of translation by inhibiting an interferon-induced protein kinase. This gene has been implicated in pulmonary carcinogenesis. Alternatively spliced transcript variants have been described for this gene. [provided by RefSeq, Nov 2012]

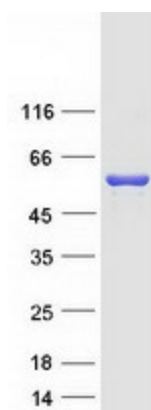
Product images:



Circular map for RC200175



Western blot validation of overexpression lysate (Cat# [LY402618]) using anti-DDK antibody (Cat# [TA50011-100]). Left: Cell lysates from untransfected HEK293T cells; Right: Cell lysates from HEK293T cells transfected with RC200175 using transfection reagent MegaTran 2.0 (Cat# [TT210002]).



Coomassie blue staining of purified DUS2 protein (Cat# [TP300175]). The protein was produced from HEK293T cells transfected with DUS2 cDNA clone (Cat# RC200175) using MegaTran 2.0 (Cat# [TT210002]).