

Product datasheet for RC200170

VSIG2 (NM_014312) Human Tagged ORF Clone

Product data:

Product Type:	Expression Plasmids
Product Name:	VSIG2 (NM_014312) Human Tagged ORF Clone
Tag:	Myc-DDK
Symbol:	VSIG2
Synonyms:	2210413P10Rik; CTH; CTXL
Mammalian Cell Selection:	Neomycin
Vector:	pCMV6-Entry (PS100001)
E. coli Selection:	Kanamycin (25 ug/mL)
ORF Nucleotide Sequence:	>RC200170 ORF sequence Red=Cloning site Blue=ORF Green=Tags(s)

TTTTGTAATACGACTCACTATAGGGCGGCCGGAATTCGTCGACTGGATCCGGTACCGAGGAGATCTGCC
GCC**CGATCGCC**

ATGGCCGAGCTCCCGGGCCCTTCTCTCGGGGCCCTGCTAGGCTTCTGTGCCTGAGTGGGCTGGCCG
TGGAGGTGAAGGTACCCACAGAGCCGCTGAGCACGCCCTGGGGAAGACAGCCGAGCTGACCTGCACCTA
CAGCACGTCGGTGGGAGACAGCTTCGCCCTGGAGTGGAGCTTTGTGCAGCCTGGGAAACCATCTCTGAG
TCCCATCCAATCCTGTACTTCACCAATGGCCATCTGTATCCAACCTGGTTCTAAGTCAAAGCGGGTCAGCC
TGCTTCAGAACCCCCACAGTGGGGTGGCCACACTGAAACTGACTGACGTCCACCCCTCAGATACTGG
AACCTACCTCTGCCAAGTCAACAACCCACCAGATTTCTACACCAATGGGTGGGGCTAATCAACCTTACT
GTGCTGGTTCCCCCAGTAATCCCTTATGCAGTCAGAGTGGACAAACCTCTGTGGGAGGCTACTACTGCAC
TGAGATGCAGCTCTCCGAGGGGCTCCTAAGCCAGTGTACAACCTGGGTGCGTCTTGGAACCTTTTCTAC
ACCTTCTCCTGGCAGCATGGTTCAAGATGAGGTGTCTGGCCAGCTCATTCTACCAACCTCTCCCTGACC
TCCTCGGGCACCTACCGCTGTGTGGCCACCAACCAGATGGGCAGTGCATCCTGTGAGCTGACCCCTCTGTG
TGACCGAACCCCTCCAAGGCCGAGTGGCCGGAGCTCTGATTGGGGTGTCTCTGGGCGTGTGTTGCTGTC
AGTTGCTGCGTTCTGCTGGTCAAGTTCAGAAAGAGAGGGGGGAAGAAGCCAAGGAGACATATGGGGGT
AGTGACCTTCGGGAGGATGCCATCGCTCCTGGGATCTCTGAGCACACTTGTATGAGGGCTGATTCTAGCA
AGGGGTTCTGGAAAGACCCTCGTCTGCCAGCACCGTGACGACCACCAAGTCCAAGCTCCCTATGGTCGT
G

ACGCGTACGCGGCCGCTCGAGCAGAAACTCATCTCAGAAGAGGATCTGGCAGCAAATGATATCCTGGATT
ACAAGGATGACGACGATAAGGTTTAA



[View online »](#)

Protein Sequence: >RC200170 protein sequence
Red=Cloning site Green=Tags(s)

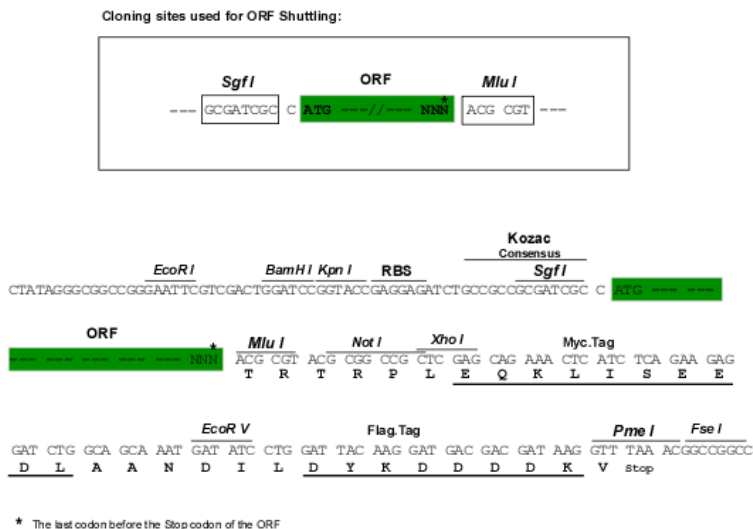
MAELPGPFLCGALLGFLCLSGLAWEVVKVPTPEPLSTPLGKTAELTCTYSTSVGDSFALEWSFVQPGKPISE
 SHPILYFTNGHL YPTGSKSKRVSL LQNPPTVG VATLKL TDVHPSDTGT YLCQVNNPPDFYTNGLGLINLT
 VLVPPSNPLCSQSGQTSVGGSTALRCSSEGAPKPVYNWVRLGTFTPTSPGSMVQDEVSGQLILTNLSLT
 SSGTYRCVATNQMGASCELTLSVTEPSQGRVAGALIGVLLGVLLLSVAAFCLVRFQKERGKKPKETYGG
 SDLREDAIAPGI SEHTCMRADSSKGF LERPSSASTVTTT KSKLPMVV

TRTRPLEQKLISEEDLAANDILDYKDDDDKV

Chromatograms: https://cdn.origene.com/chromatograms/mk6406_b05.zip

Restriction Sites: SgfI-MluI

Cloning Scheme:



ACCN: NM_014312

ORF Size: 981 bp

OTI Disclaimer: The molecular sequence of this clone aligns with the gene accession number as a point of reference only. However, individual transcript sequences of the same gene can differ through naturally occurring variations (e.g. polymorphisms), each with its own valid existence. This clone is substantially in agreement with the reference, but a complete review of all prevailing variants is recommended prior to use. [More info](#)

OTI Annotation: This clone was engineered to express the complete ORF with an expression tag. Expression varies depending on the nature of the gene.

Components: The ORF clone is ion-exchange column purified and shipped in a 2D barcoded Matrix tube containing 10ug of transfection-ready, dried plasmid DNA (reconstitute with 100 ul of water).

- Reconstitution Method:**
1. Centrifuge at 5,000xg for 5min.
 2. Carefully open the tube and add 100ul of sterile water to dissolve the DNA.
 3. Close the tube and incubate for 10 minutes at room temperature.
 4. Briefly vortex the tube and then do a quick spin (less than 5000xg) to concentrate the liquid at the bottom.
 5. Store the suspended plasmid at -20°C. The DNA is stable for at least one year from date of shipping when stored at -20°C.

RefSeq: [NM_014312.5](#)

RefSeq Size: 1138 bp

RefSeq ORF: 984 bp

Locus ID: 23584

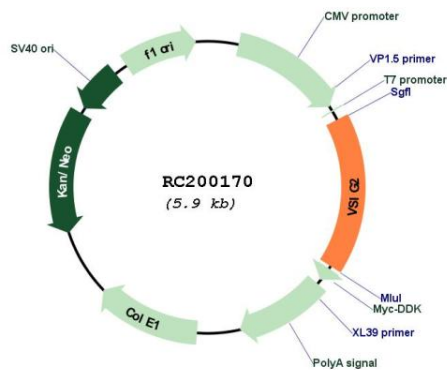
UniProt ID: [Q96IQ7](#)

Cytogenetics: 11q24.2

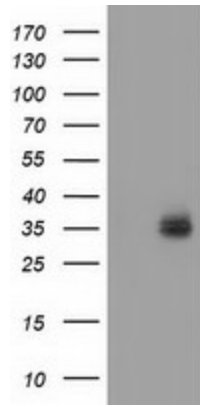
Protein Families: Druggable Genome, Transmembrane

MW: 34.3 kDa

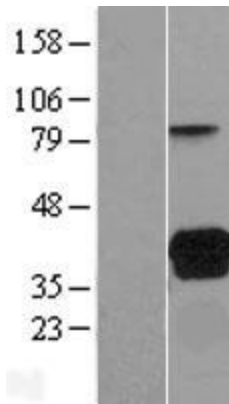
Product images:



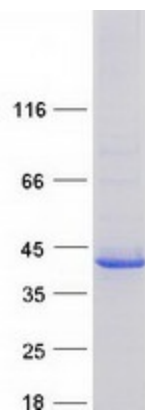
Circular map for RC200170



HEK293T cells were transfected with the pCMV6-ENTRY control (Cat# [PS100001], Left lane) or pCMV6-ENTRY VSIG2 (Cat# RC200170, Right lane) cDNA for 48 hrs and lysed. Equivalent amounts of cell lysates (5 ug per lane) were separated by SDS-PAGE and immunoblotted with anti-VSIG2 (Cat# [TA502125]). Positive lysates [LY415368] (100ug) and [LC415368] (20ug) can be purchased separately from OriGene.



Western blot validation of overexpression lysate (Cat# [LY415368]) using anti-DDK antibody (Cat# [TA50011-100]). Left: Cell lysates from untransfected HEK293T cells; Right: Cell lysates from HEK293T cells transfected with RC200170 using transfection reagent MegaTran 2.0 (Cat# [TT210002]).



Coomassie blue staining of purified VSIG2 protein (Cat# [TP300170]). The protein was produced from HEK293T cells transfected with VSIG2 cDNA clone (Cat# RC200170) using MegaTran 2.0 (Cat# [TT210002]).